

hp compaq d530 Series Personal Computer

illustrated parts map
Ultra Slim Desktop



© 2003 Hewlett-Packard Development Company, L.P.

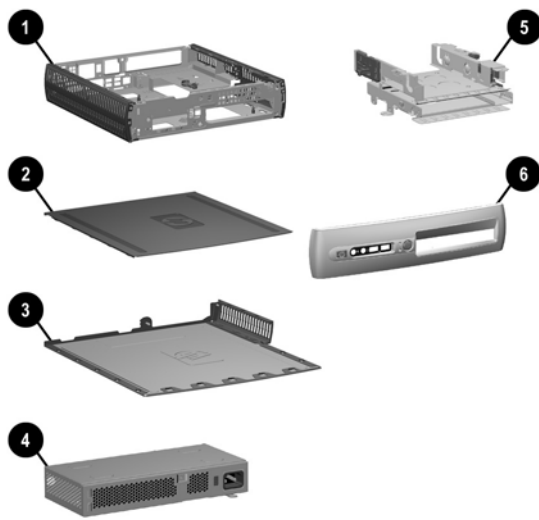
HP and the HP logo are trademarks of Hewlett-Packard Development Company, L.P.

All other product names mentioned herein may be trademarks of their respective companies.

HP shall not be liable for technical or editorial errors or omissions contained herein. The information in this document is provided "as is" without warranty of any kind and is subject to change without notice. The warranties for HP products are set forth in the express limited warranty statements accompanying such products. **Nothing herein should be construed as constituting an additional warranty.**

July 2003

Document Number
334097-001



System Unit

1	Chassis assembly	not spared
2	Computer access panel (top)	333030-001
3	computer bottom panel with rubber feet and thumb-screw	333031-001
4	Power supply, PFC	308619-001
5	MultiBay Holder	333033-001
6	Front bezel assembly	333035-001
6	Front bezel assembly (not painted, for Blue Angel use only)	335168-001

Easy Access Keyboards (not illustrated)

PS/2	323686-xxx		
Wireless	323745-xxx		
USB	324634-xxx		
USB	323746-xxx		
Arabic	-171	Japanese	-291
Belgian	-181	Korean (Hangul)	-AD1
BHCSY	-B41	LA Spanish	-161
Brazilian Portuguese	-201	Norwegian	-091
Czech	-221	PRC	-AA1
Danish	-081	Polish #	-241
Finnish	-351	Portuguese	-131
French	-051	Russian	-251
French Arabic *	-DE1	Slovakian	-231
French Canadian	-121	Spanish	-071
German	-041	Swedish	-101
Greek	-151	Swiss *	-111
Hebrew \$	-BB1	Taiwanese	-AB1
Hungarian \$##	-211	Thai	-281
International	-B31	Turkish	-141
International**	-021	U.S.	-001
Italian	-061	U.K.	-031

*not for 323686-xxx
**for 324634-xxx only
\$not for 323746-xxx

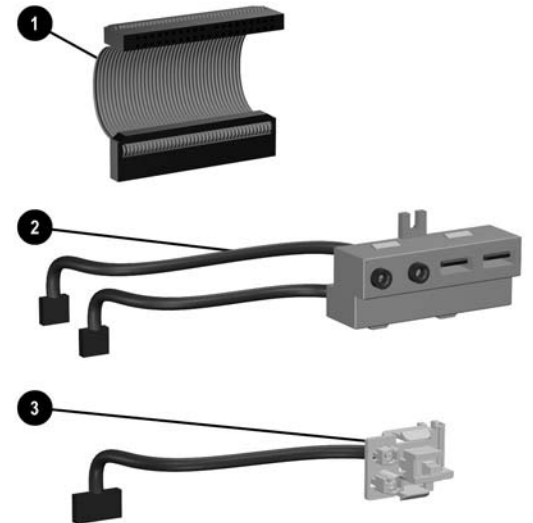
#for 323686-xxx only
##not for 323745-xxx

Easy Access Keyboards (not illustrated)

PS/2, BG Certified	325445-xxx		
Brazilian Portuguese	-181	International	-B31
Danish	-081	Italian	-061
French	-051	Swedish	-101
German	-041	Swiss	-111

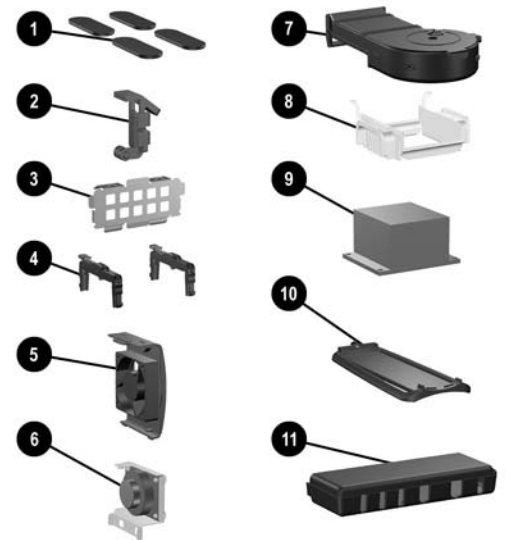
Mass Storage Devices (not illustrated)

40 GB\5400 RPM Hard drive	236921-001
80 GB\5400 RPM Hard drive	292208-001
40 G B\7200 RPM Hard drive	286692-001
80 GB\7200 RPM Hard drive	250185-001
160 GB\7200 RPM Hard drive	325306-001
Diskette drive	335169-001
24X CD-RW/DVD-ROM MultiBay drive	325312-001
24X CED-ROM MultiBay drive	325314-001
24/10/24X CD-RW MultiBay drive	325315-001
8X/24X DVD-ROM MultiBay drive	325316-001



Cables

1	Hard drive data cable (320382-001)	333038-001
2	Front USB I/O device with cable	345026-001
3	Power switch/LED cable with switch holder	333032-001



Miscellaneous Parts

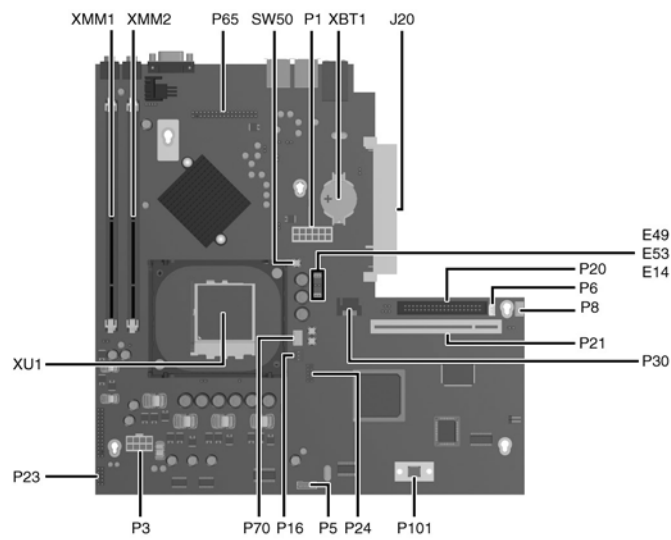
Miscellaneous Hardware Kit, contains:		333350-001
1	Rubber foot (4 ea) (320354-001)	
2	PCI locking device (326015-001)	
3	DVI door (326021-001)	
4	Heat sink retaining clip (2 ea) (336352-001)	
5	Chassis fan with housing	343419-001
6	Speaker with holder	333034-001
7	CPU fan with shroud	333036-001
8	Lower air flow guide	333037-001
9	Heat sink with thermal grease and alcohol pad	333040-001
10	Pedestal	333039-001
11	Port control cover (331863-001)	pending
*	Mouse, 2-Button, PS/2 with scroll wheel	323614-001
*	Mouse, 2-Button, wireless with scroll wheel	323616-001
*	Mouse, 2-Button, USB, optical with scroll wheel	323617-001
*	Mouse, 2-Button, USB, with scroll wheel	323615-001
*	Drive Key, 16 MB	324780-001
*	Drive Key, 64 MB	331465-001
*	Drive Key, 128 MB	331466-001
*	Return kit with buns	335140-001
*	Real-time-clock battery	153099-001
Miscellaneous Screw Kit, includes		333351-001
*	Thumb screw (326029-001) (2 ea)	
*	#6-32 x .187 HiTop (262508-003) (2 ea)	
*	#6-32 x .250 HiTop (262508-001) (2 ea)	

*Not shown

Standard and Optional Boards

1	System board with alcohol pad and thermal grease	332935-001
Intel Processors with alcohol pad and thermal grease		
2	Celeron 2.0 GHz processor	309578-001
*	Celeron 2.2 GHz processor	321723-001
*	Celeron 2.3 GHz processor	335136-001
*	Pentium 2.4 GHz processor	288689-001
*	Pentium 2.53 GHz processor	333485-001
*	Pentium 2.66 GHz processor	305579-001
*	Pentium 2.8 GHz processor	305051-001
*	Pentium 3.0 GHz processor	315637-001
Memory Modules		
3	128 MB/400 MHz FSB	335697-001
*	256 MB/400 MHz FSB	335698-001
*	512 MB/400 MHz FSB	335699-001
*	1.0 GB/400 MHz FSB	335700-001
*	128 MB/333 MHz FSB	314795-001
*	256 MB/333 MHz FSB	314793-001
*	512 MB/333 MHz FSB	314796-001
*	1.0 GB/333 MHz FSB	314794-001
Other Cards		
*	TCPA security module	332603-001
*	1394 PCI card with 2 external and 1 internal ports	287476-001
*	Lucent V92 modem	239411-001
*	DVI ADD 4-layer card	326137-001

*Not shown



System Board Connectors and Jumpers (position of some untitled components may vary in location)

E14	Boot block	P23	Front audio
E49	Password jumper (default = installed)	P24	Front USB
E53	TPM physical presence	P30	Primary Serial ATA (SATA) Port
J20	PCI slot 1	P65	DVI module
P1	Main power	P70	CPU fan (power)
P3	Regulated power	P101	TPM connector
P5	Power button/LED	SW50	CMOS button
P6	Internal chassis speaker	XBT1	Battery
P8	Chassis fan	XMM1	Memory socket
P16	CPU fan control (from power supply)	XMM2	Memory socket
P20	Primary IDE (hard drive)	XU1	Processor
P21	Secondary IDE (MultiBay)		

System Hardware Interrupts

IRQ	System Function	IRQ	System Function
0	Timer Interrupt	8	Real-Time Clock
1	Keyboard	9	Unused
2	Interrupt Controller Cascade	10	Unused, available for PCI
3	Serial Port (COM B)	11	Unused, available for PCI
4	Serial Port (COM A)	12	Mouse
5	Unused, available for PCI	13	Coprocessor
6	Diskette Drive	14	Primary ATA (IDE) Controller
7	Parallel Port (LPT 1)	15	Secondary ATA (IDE) Controller

Computer Diagnostic LEDs (on front of computer)

LED	Color	LED Activity	State/Message
Power	Green	On	(S0) Computer on
Power	Green	1 blink every 2 seconds	(S1) Suspend Mode
Power	Green	1 blink every 2 seconds	(S3) Suspend to RAM
Power	Green	Off	(S4) Suspend to Disk (if applicable)
Power	Clear	Off	(S5) Computer off
Power	Red	1 blink followed by 2-second pause - Repeat	Power Supply failure
Power	Red*	2 blinks 1 second apart	CPU thermal shutdown
Power	Red*	3 blinks 1 second apart	CPU not installed
Power	Red*	4 blinks 1 second apart	Power supply overload (crow bar)
Power	Red*	5 blinks 1 second apart	No memory
Power	Red*	6 blinks 1 second apart	No graphics
Power	Red*	7 blinks 1 second apart	System board failure (detected prior to video)
Power	Red*	8 blinks 1 second apart	Invalid ROM
Hard Drive	Green	Blinking	Hard drive activity

*Blinking codes are repeated after a 2 second pause.

Clearing CMOS

The computer's configuration (CMOS) may occasionally be corrupted. If it is, it is necessary to clear the CMOS memory using switch SW50.

To clear and reset the configuration, perform the following procedure:

1. Prepare the computer for disassembly.

CAUTION: The power cord must be disconnected from the power source before pushing the Clear CMOS Button (NOTE: All LEDs on the board should be OFF). Failure to do so may damage the system board

2. Remove the access panel.
3. Press the CMOS button located on the system board and keep it depressed for 5 seconds.
4. Replace the access panel.
5. Turn the computer on and run F10 Computer Setup (Setup-utility) to reconfigure the system.

Disabling or Clearing the Power-On and Setup Passwords

1. Turn off the computer and any external devices, and disconnect the power cord from the power outlet.
2. Remove the access panel.
3. Locate the header and jumper labeled E49.
4. Remove the jumper from pins 1 and 2. Place the jumper over pin 2 only, in order to avoid losing it.
5. Replace the access panel.
6. Plug in the computer and turn on power. Allow the operating system to start.
NOTE: Placing the jumper on pin 2 clears the current passwords and disables the password features.
7. To re-enable the password features, repeat steps 1-3, then replace the jumper on pins 1 and 2.
8. Repeat steps 5-6, then establish new passwords.

Refer to the Computer Setup (F10 Setup) instructions to establish new passwords.

Computer Setup (F10) Utility Features (not all features may be available)

File	System Information About Set Time and date	Save to Diskette Restore From Diskette Set defaults and Exit	Ignore Changes and Exit Save Changes and Exit
Storage	Device Configuration Options	IDE DPS Self-Test Controller Order	Boot Order
Security	Setup Password Power-On Password Password Options Smart Cover	Smart Sensor DriveLock Master Boot Record Security Save Master Boot Record	Restore Master Boot Record Device Security Network Service Boot System IDs
Advanced	Power-On Options Onboard devices	PCI Devices Bus Options	Device Options PCI VGA Configuration

Note: See Computer Setup (F10) Utility Guide on the Documentation Library CD.