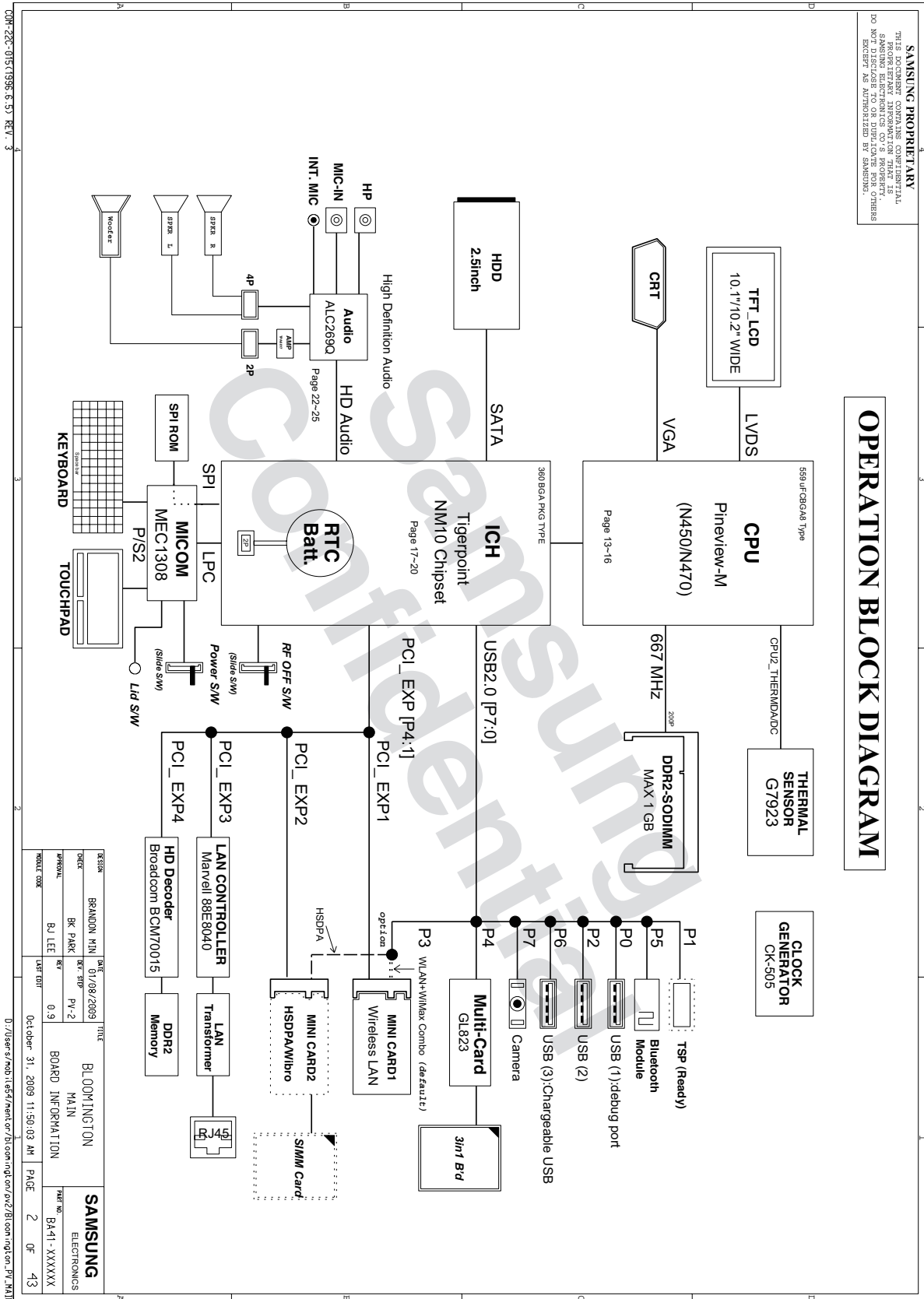


## 8. Block Diagram and Schematic

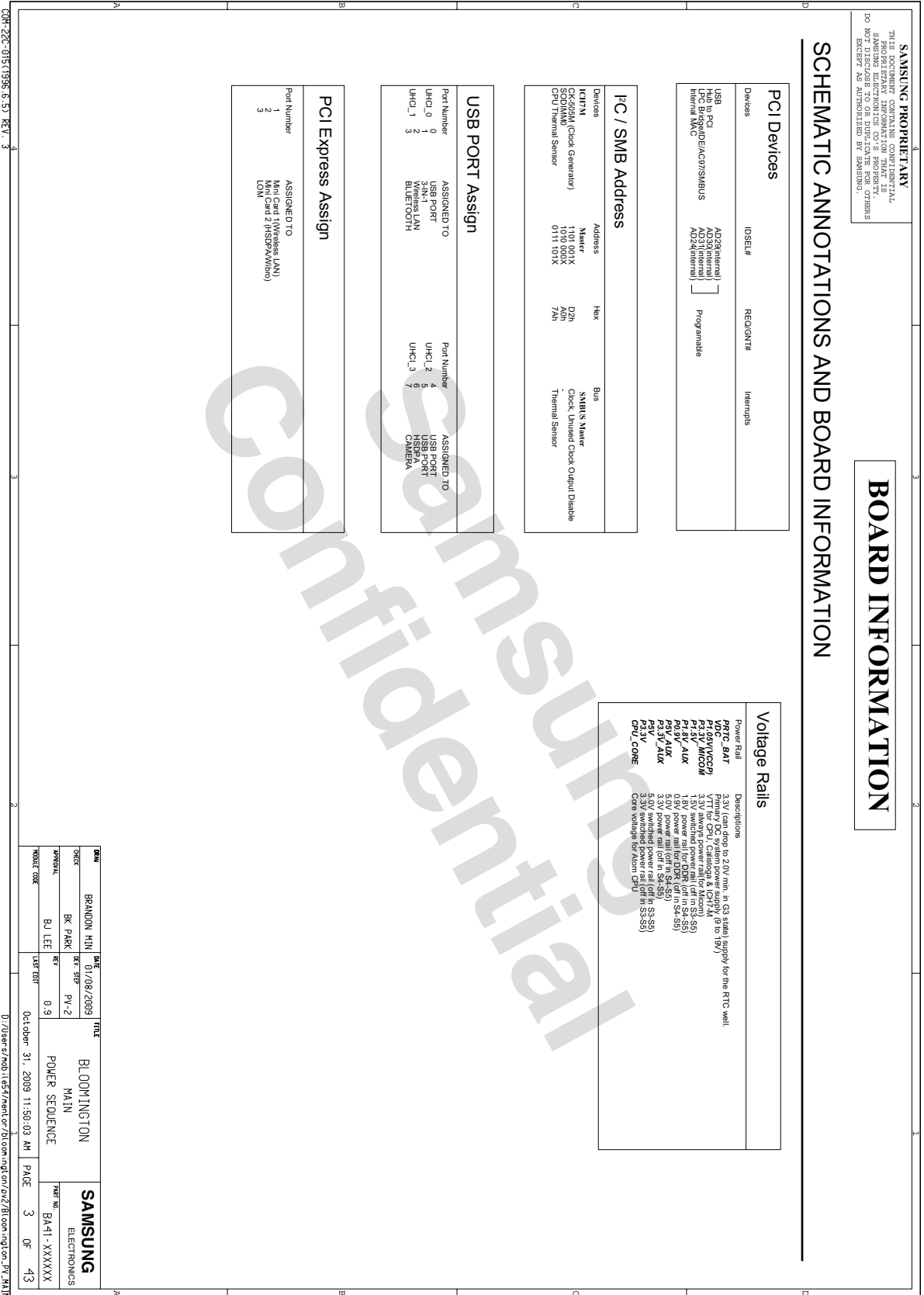
<p style="text-align: center;"><b>SAMSUNG PROPRIETARY</b>                  THIS DOCUMENT CONTAINS CONFIDENTIAL INFORMATION AND IS THE PROPERTY OF SAMSUNG ELECTRONICS CO. S. PROPERTY. DO NOT DISCLOSE TO OR REPLICATE FOR OTHERS EXCEPT AS AUTHORIZED BY SAMSUNG.</p>																					
<h1>Bloomington</h1>																					
<p>CPU : INTEL PINEVIEW-W-M                  Chip Set : INTEL TIGERPOINT-M                  Remarks :</p>																					
<p>Model Name : PINE TRAIL-M                  PCB Part No :</p>																					
<p>Dev. Step : PV2                  Revision : 0.9                  T.R. Date : 2009.11.09</p>																					
DRAW	CHECK	APPROVAL																			
<p style="font-size: 2em; opacity: 0.3; transform: rotate(-45deg);">Samsung Confidential</p>																					
<h3>Table of Contents</h3>																					
Page. 1	COVER																				
Page. 2	OPERATION BLOCK DIAGRAM																				
Page. 3	BOARD INFORMATION																				
Page. 4~6	POWER DIAGRAM / SEQUENCE																				
Page. 7	CLOCK DISTRIBUTION																				
Page. 8	CLOCK GENERATOR (CK-505M)																				
Page. 9	THERMAL MONITOR																				
Page. 10~12	PINEVIEW-W (N450/N470 CPU)																				
Page. 13~15	TIGERPOINT (NM10 CHIPSET)																				
Page. 16	SPI ROM & DEBUG PORT																				
Page. 17	DDR2 SODIMM																				
Page. 18	CRT CONN.																				
Page. 19	LCD (LVDS) CONN.																				
Page. 20	HD DECODER (BROADCOM BCM70015)																				
Page. 21	AUDIO CODEC (ALC269Q-GR)																				
Page. 22	AMP & WOOFER																				
Page. 23	HP & MIC & INT. MIC																				
Page. 24	LAN (10/100)																				
Page. 25	HDD CONNECTOR (SATA)																				
Page. 26	MINI-CARD (Wireless & HSDPA/WiBro)																				
Page. 27	USB																				
Page. 28	BT & CAMERA & TSP																				
Page. 29	CARDBUS CONTROLLER (GL823)																				
Page. 30	MICOM (MEC1308)																				
Page. 31	KBD CONN & MICOM GLUE LOGIC																				
Page. 32	LED Logic																				
Page. 33	Free Fall Sensor																				
Page. 34	CPU VRM POWER (VCC CORE)																				
Page. 35	CHIPSET POWER (P1.05V, P1.5V & P1.2V)																				
Page. 36	DDR2 POWER																				
Page. 37	P3.3V AUX & P5V_AUX																				
Page. 38	CHARGER																				
Page. 39	GRAPHICS POWER (P0.89V)																				
Page. 40	SWITCHED POWER																				
Page. 41	POWER DISCHARGER																				
Page. 42	BLANK PAGE (TBD)																				
Page. 43	MOUNT HOLE																				
Page. 44~45	TEST POINTS																				
<table border="1" style="width: 100%; border-collapse: collapse;"> <tr> <td style="width: 20%;">REVISION</td> <td style="width: 20%;">BRANDON MIN</td> <td style="width: 20%;">DATE</td> <td style="width: 20%;">REV</td> <td style="width: 20%;">FILE</td> </tr> <tr> <td>CHECK</td> <td>BR PAKK</td> <td>10/09/2009</td> <td>PV-2</td> <td>BLOOMINGTON</td> </tr> <tr> <td>APPROVAL</td> <td>BJ LEE</td> <td>0.9</td> <td></td> <td>MAIN COVER</td> </tr> <tr> <td>MODEL CODE</td> <td></td> <td></td> <td></td> <td></td> </tr> </table>		REVISION	BRANDON MIN	DATE	REV	FILE	CHECK	BR PAKK	10/09/2009	PV-2	BLOOMINGTON	APPROVAL	BJ LEE	0.9		MAIN COVER	MODEL CODE				
REVISION	BRANDON MIN	DATE	REV	FILE																	
CHECK	BR PAKK	10/09/2009	PV-2	BLOOMINGTON																	
APPROVAL	BJ LEE	0.9		MAIN COVER																	
MODEL CODE																					
<p style="font-size: 0.8em;">D:\user6\mob\es47\reloc\h\com\ngt\on\p2\8\com\ngt\on_P3_MAIN</p>																					
<p>SAMSUNG ELECTRONICS PART NO. BA41-XXXXXX OF 43 PAGE 1</p>																					

- 이 문서는 삼성전자의 기술 자산으로 승인자만이 사용할 수 있습니다 -  
 - This Document can not be used without Samsung's authorization -

# 8. Block Diagram and Schematic

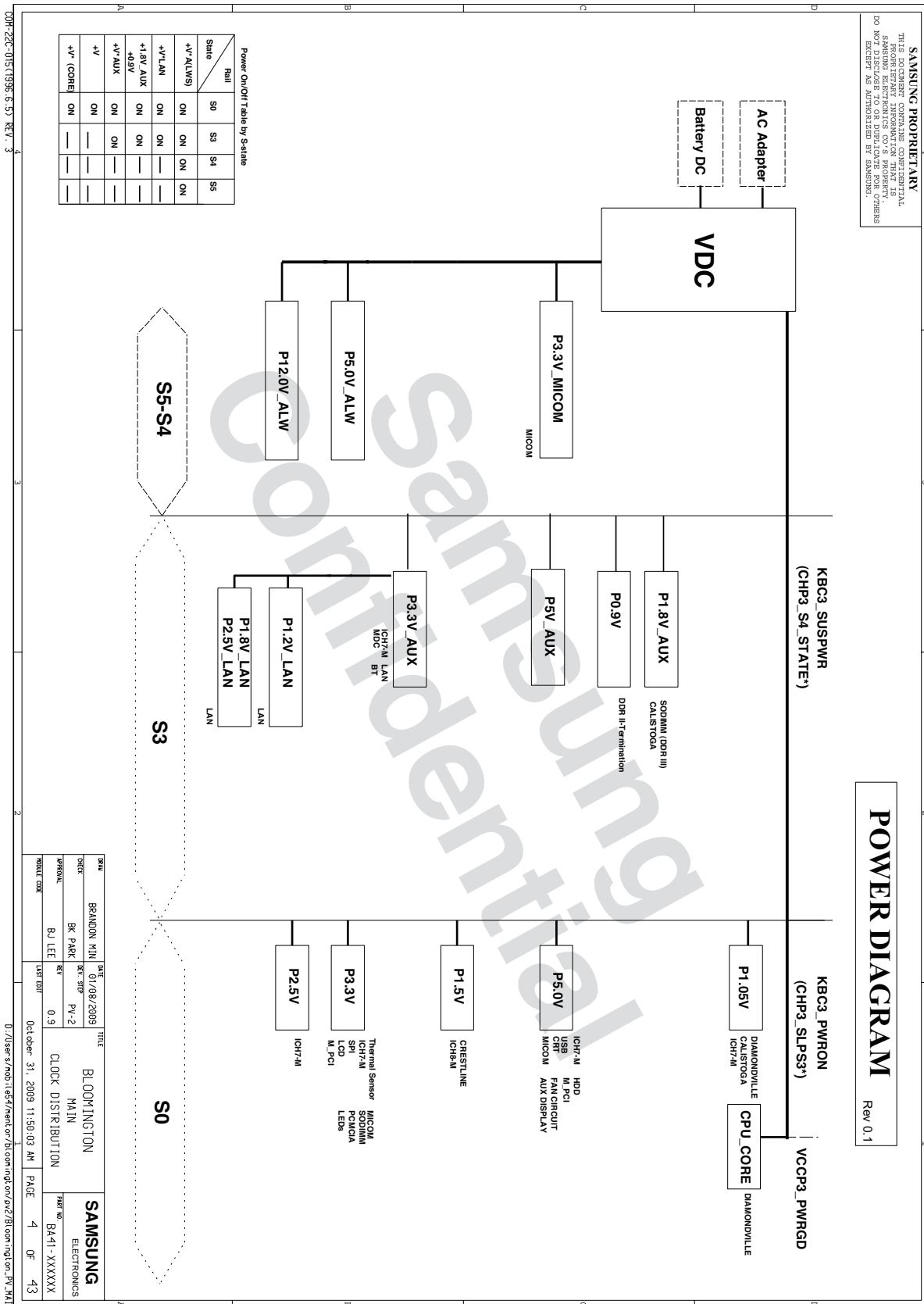


## 8. Block Diagram and Schematic



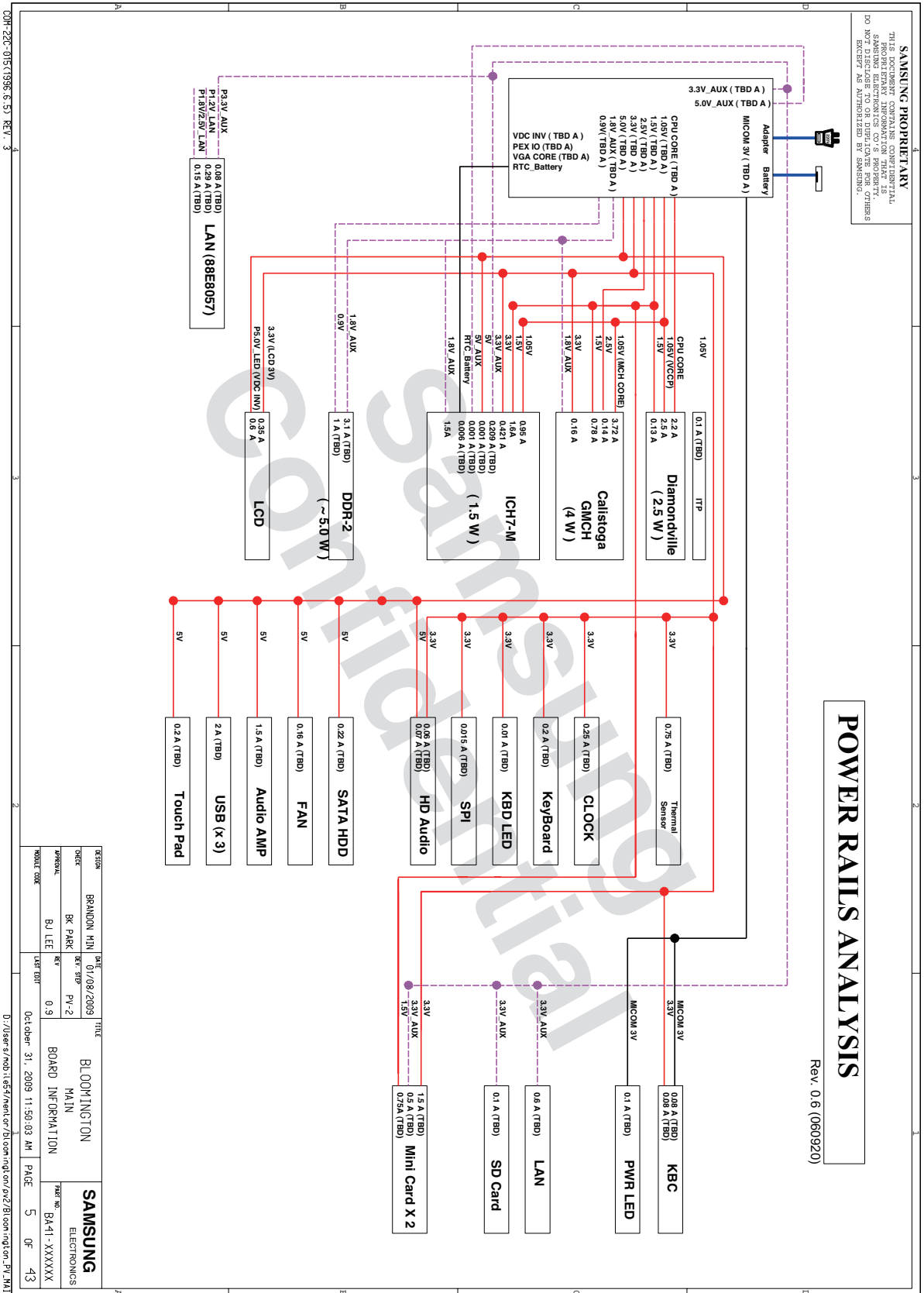
- 이 문서는 삼성전자의 기술 자산으로 승인자만이 사용할 수 있습니다 -  
 - This Document can not be used without Samsung's authorization -

## 8. Block Diagram and Schematic



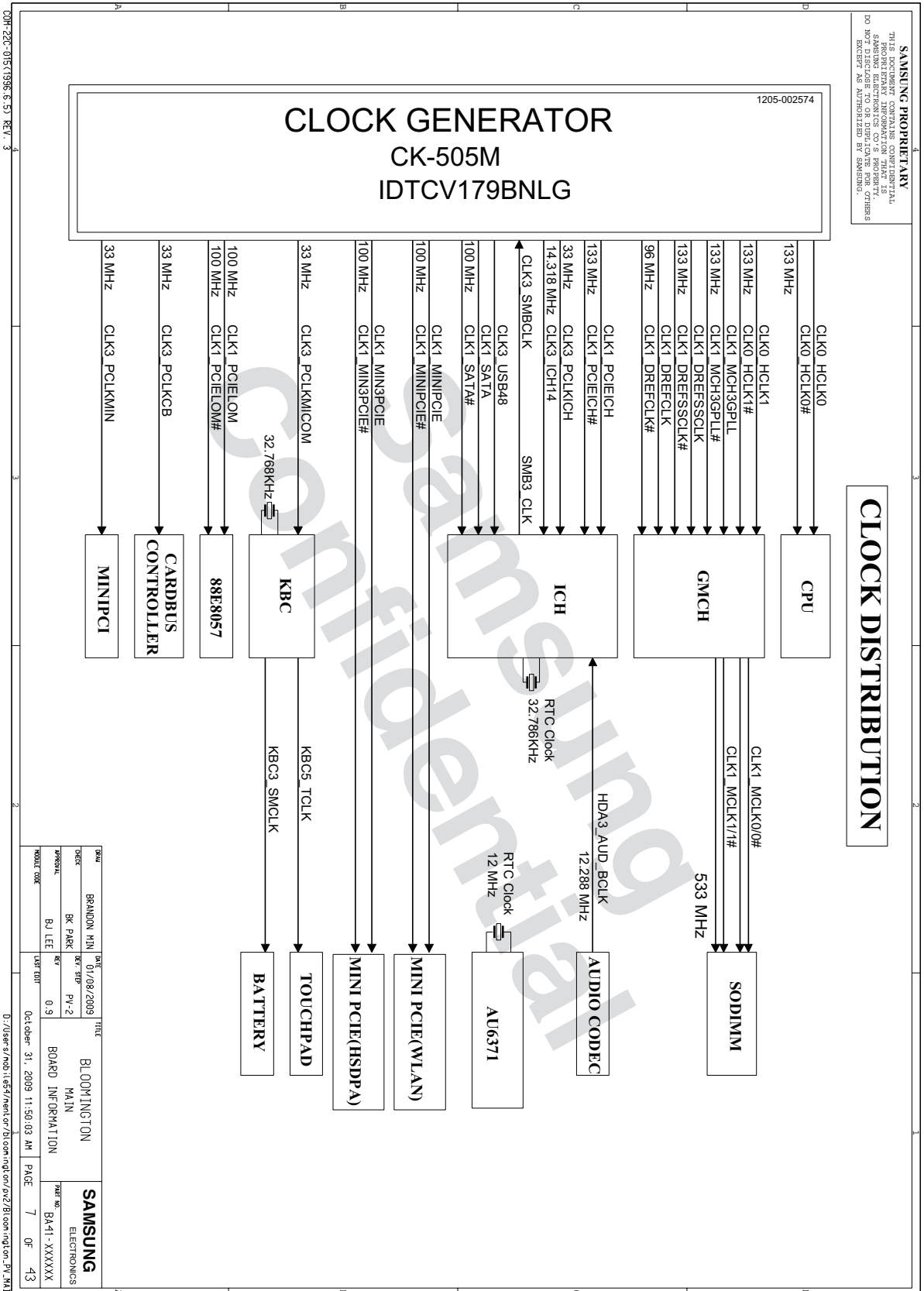
- 이 문서는 삼성전자의 기술 자산으로 승인자만이 사용할 수 있습니다 -  
 - This Document can not be used without Samsung's authorization -

## 8. Block Diagram and Schematic

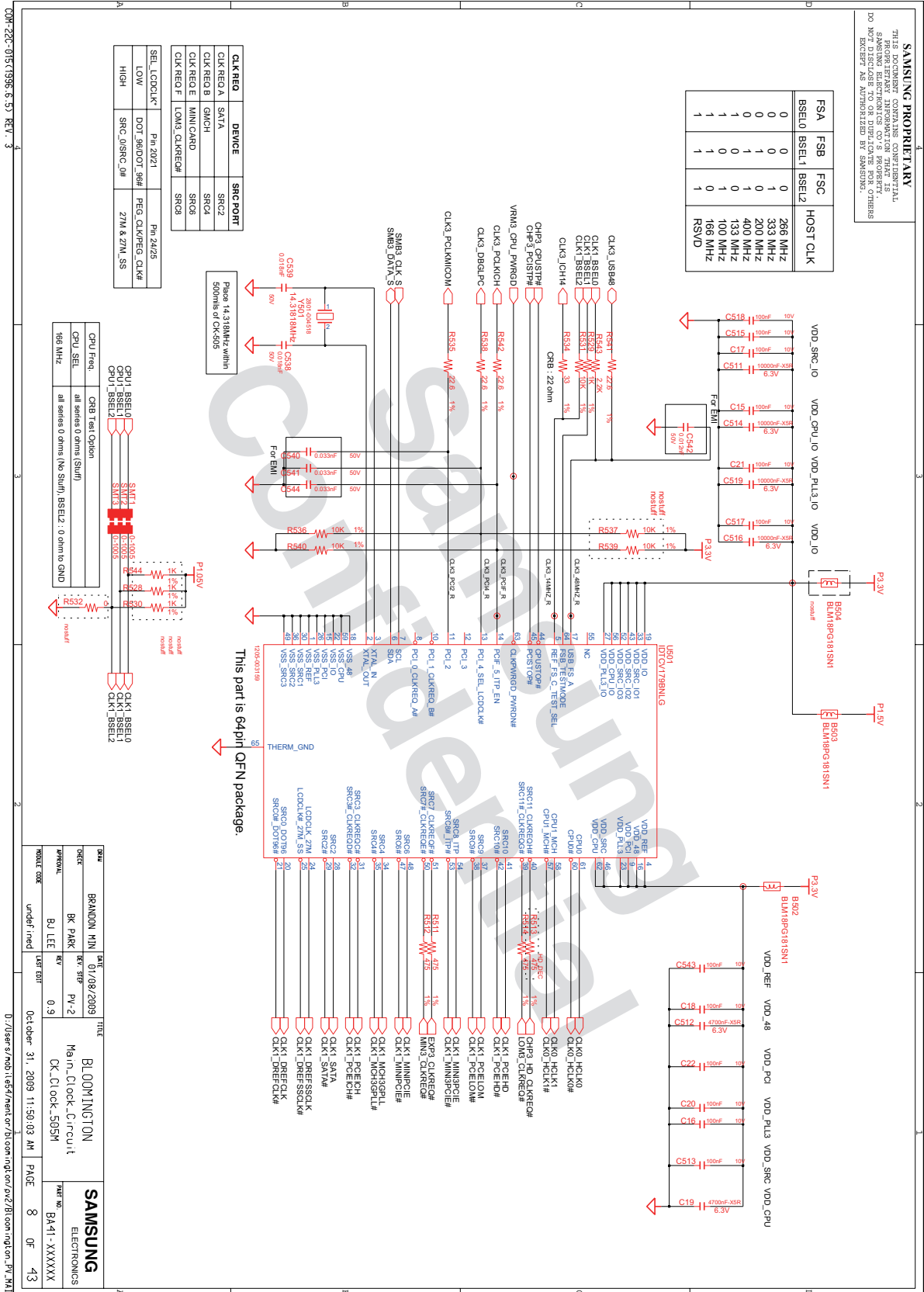




## 8. Block Diagram and Schematic



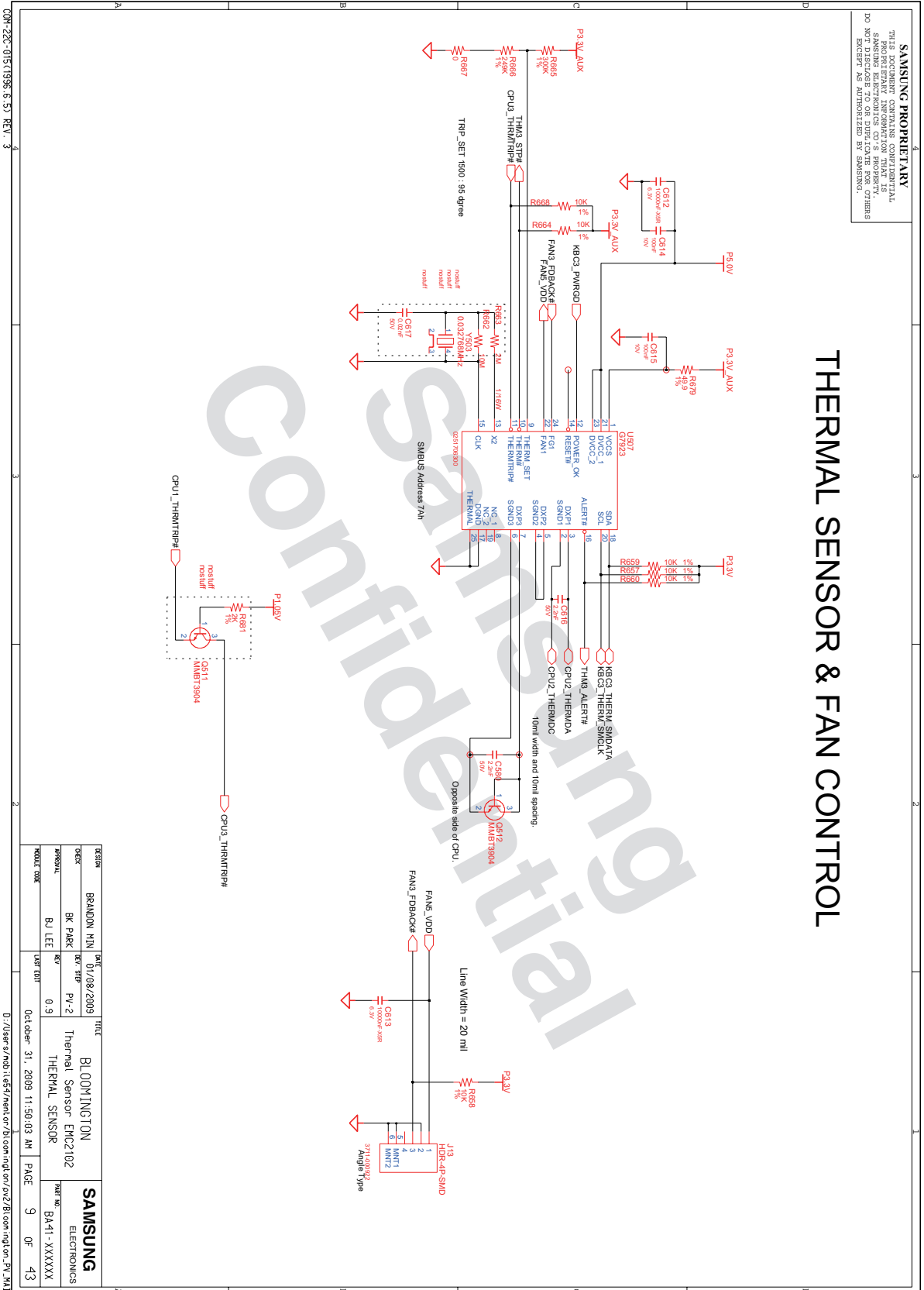
# 8. Block Diagram and Schematic





- 이 문서는 삼성전자의 기술 자산으로 승인자만이 사용할 수 있습니다 -
- This Document can not be used without Samsung's authorization -

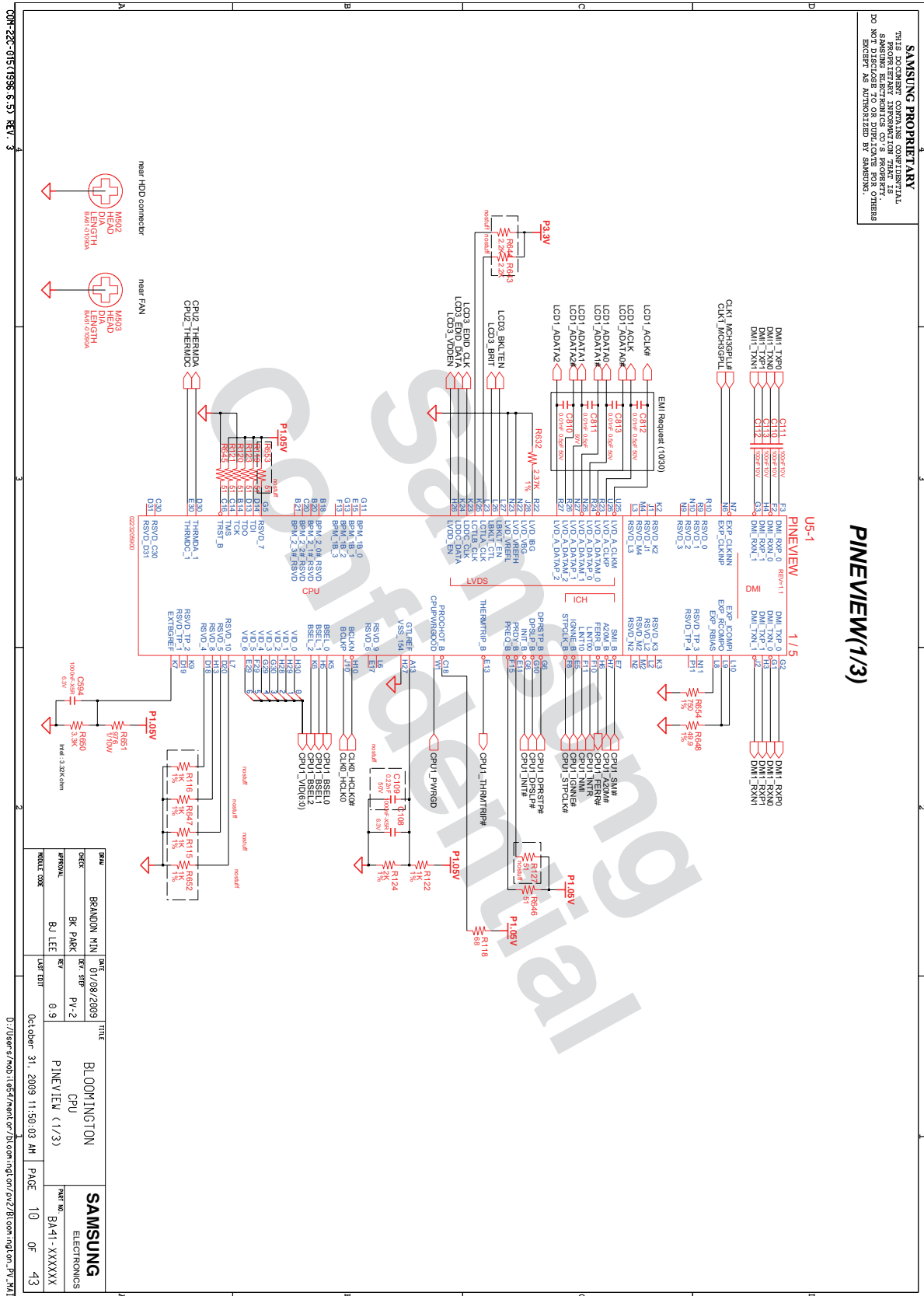
## 8. Block Diagram and Schematic



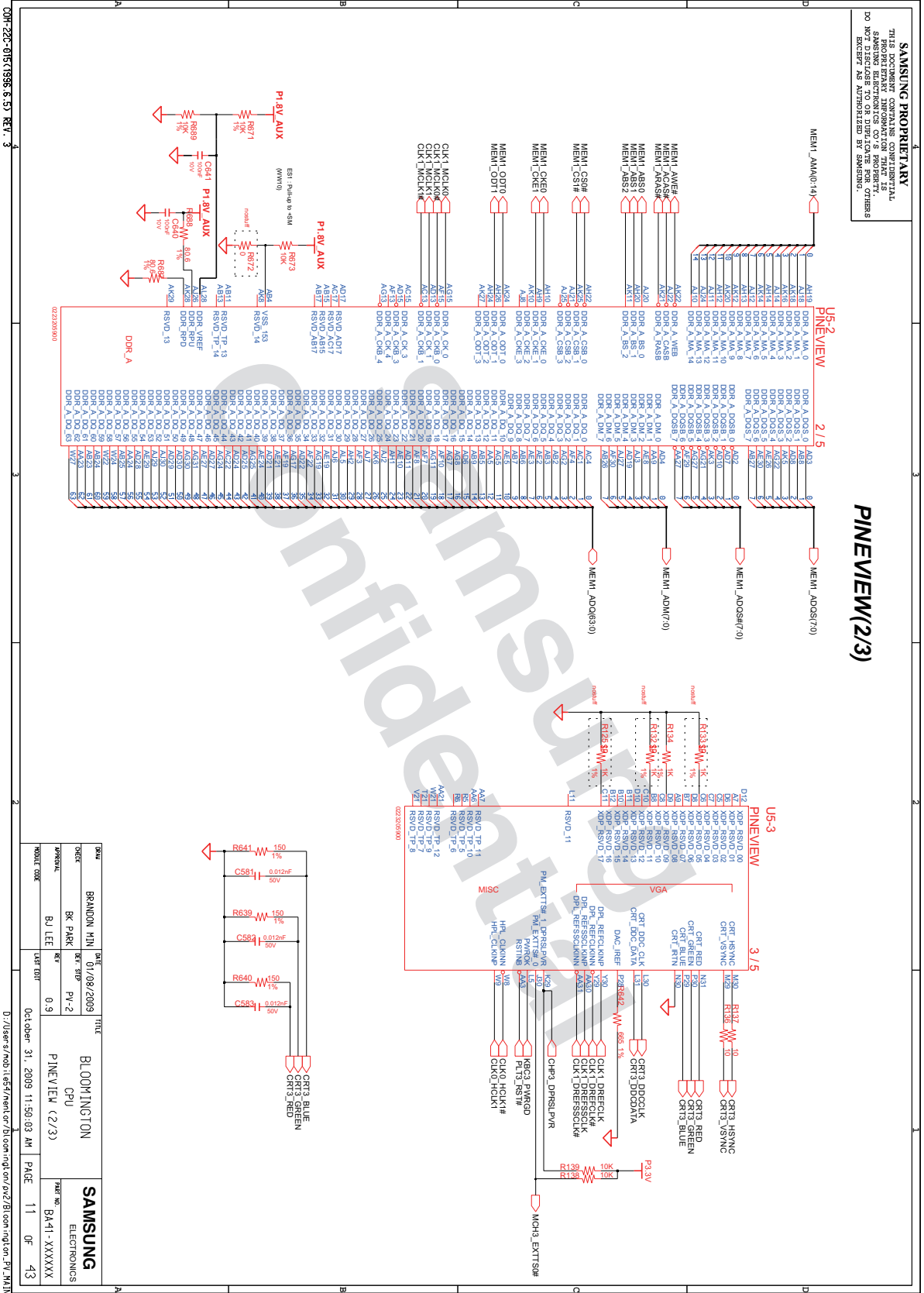
SECTION	BRANDON_NIN	DATE	07/08/2009
DESIGN	BK PARK	REV	PV-2
PERSONAL	BJ LEE	SCALE	0.9
MODEL CODE		DATE	October 31, 2009 11:50:03 AM
TITLE		PAGE	
BLDOWINGTON Thermal Sensor ENC2102 THERMAL SENSOR		9 OF 43	
<b>SAMSUNG</b>		PART NO. BA-1-XXXXXX	
ELECTRONICS			

D:\Users\smob1657\nt\cr\bu\com\eng\m\o2\Bldownington\_PV\_MAIN

# 8. Block Diagram and Schematic



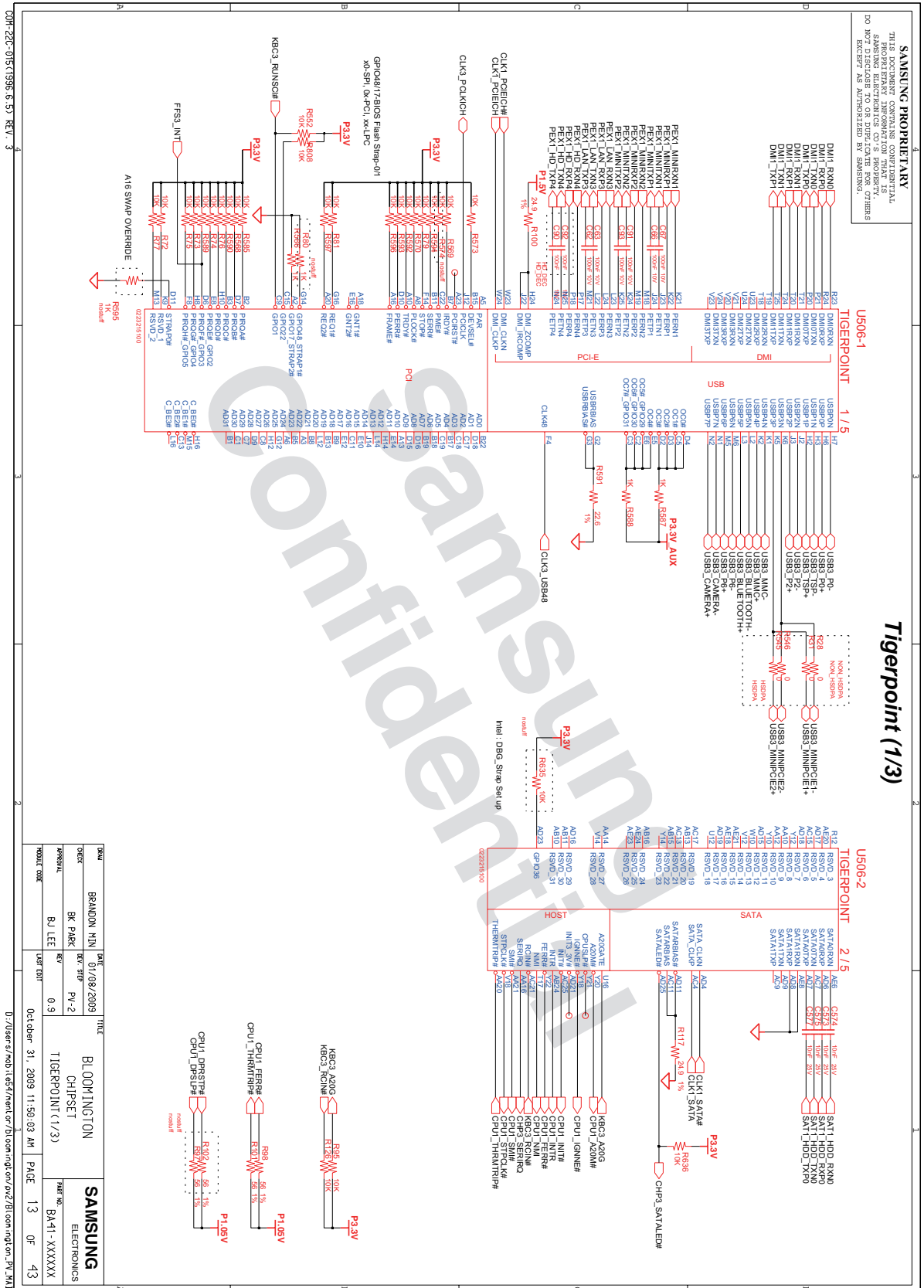
## 8. Block Diagram and Schematic



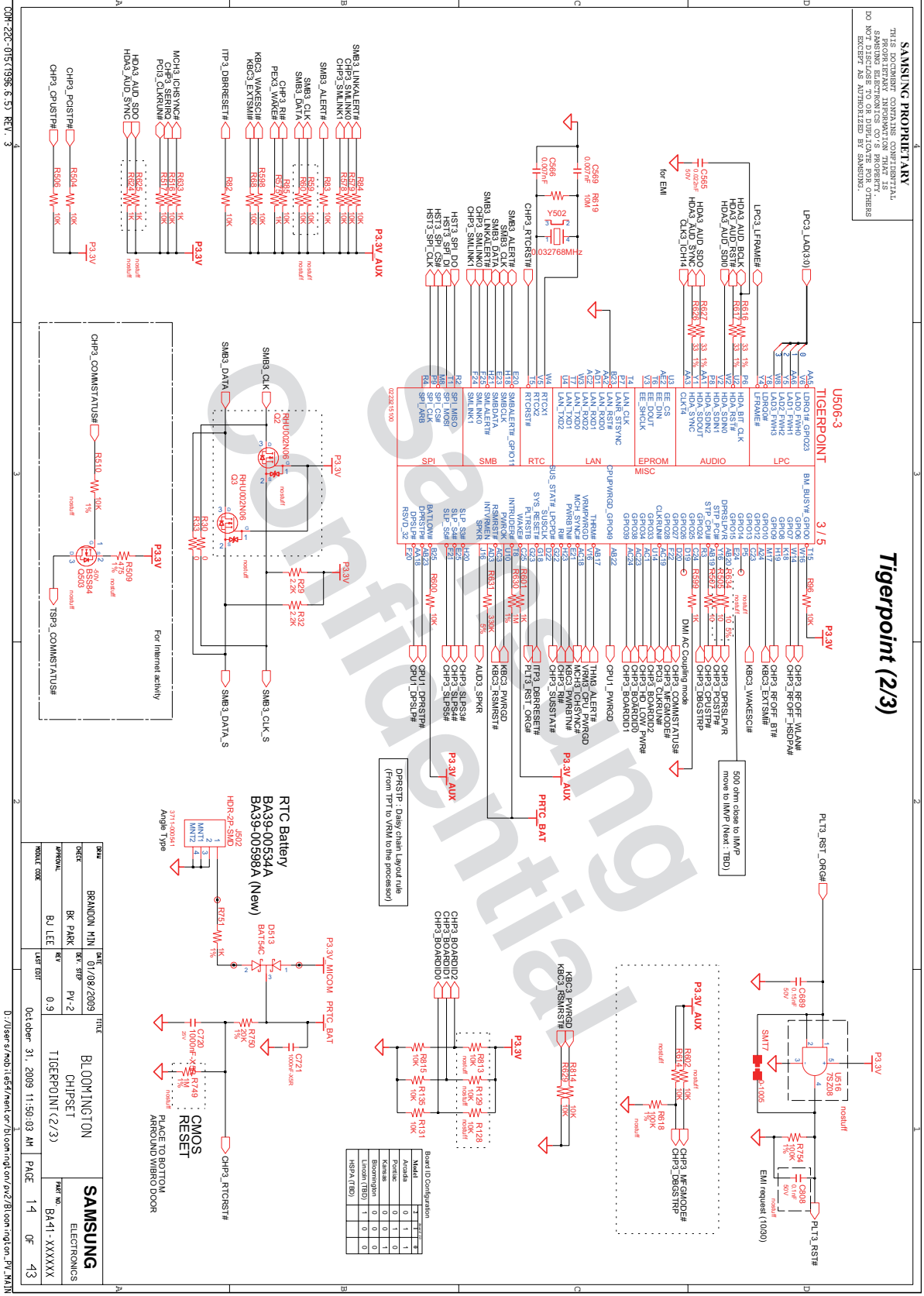


- 이 문서는 삼성전자의 기술 자산으로 승인자만이 사용할 수 있습니다 -  
 - This Document can not be used without Samsung's authorization -

# 8. Block Diagram and Schematic

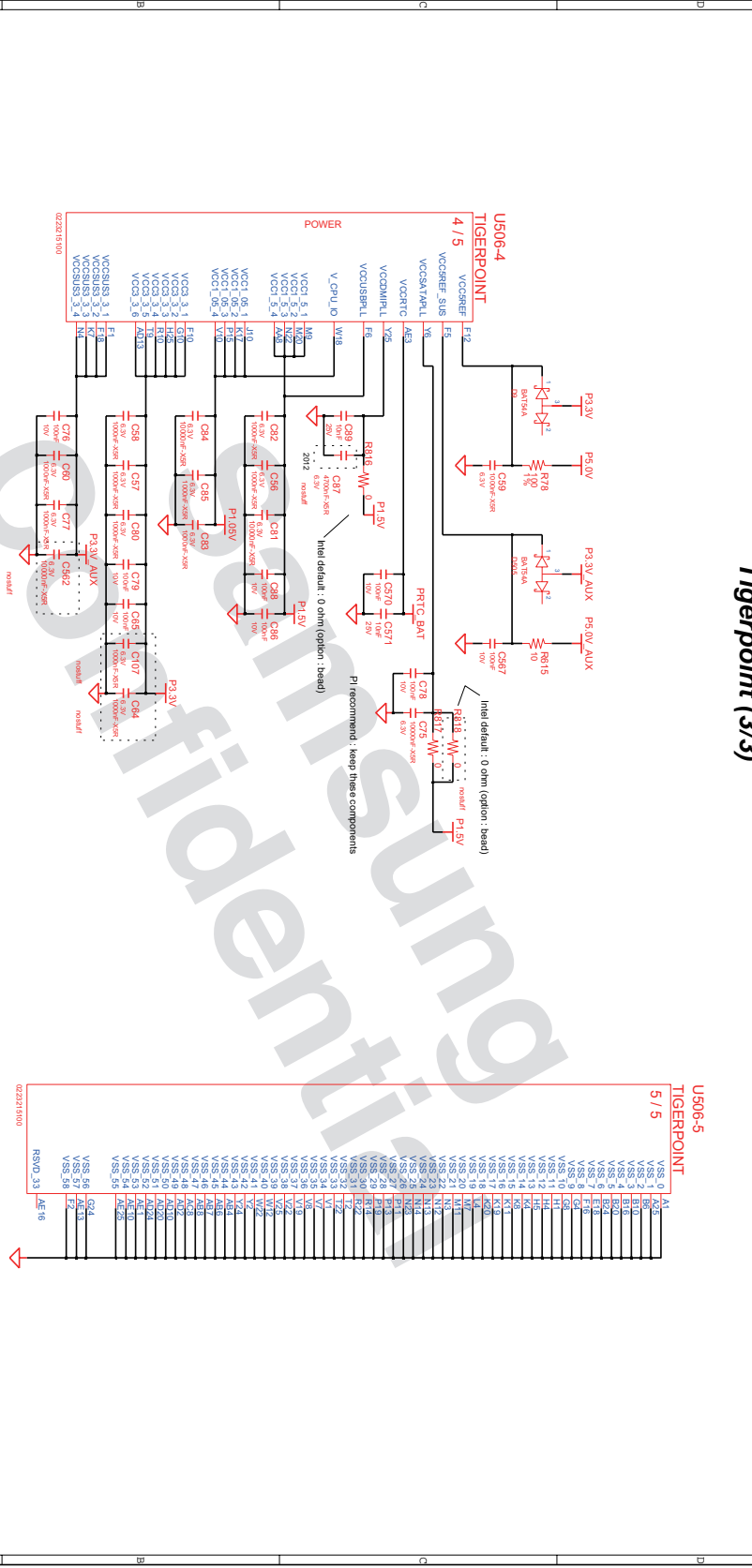


# 8. Block Diagram and Schematic



# 8. Block Diagram and Schematic

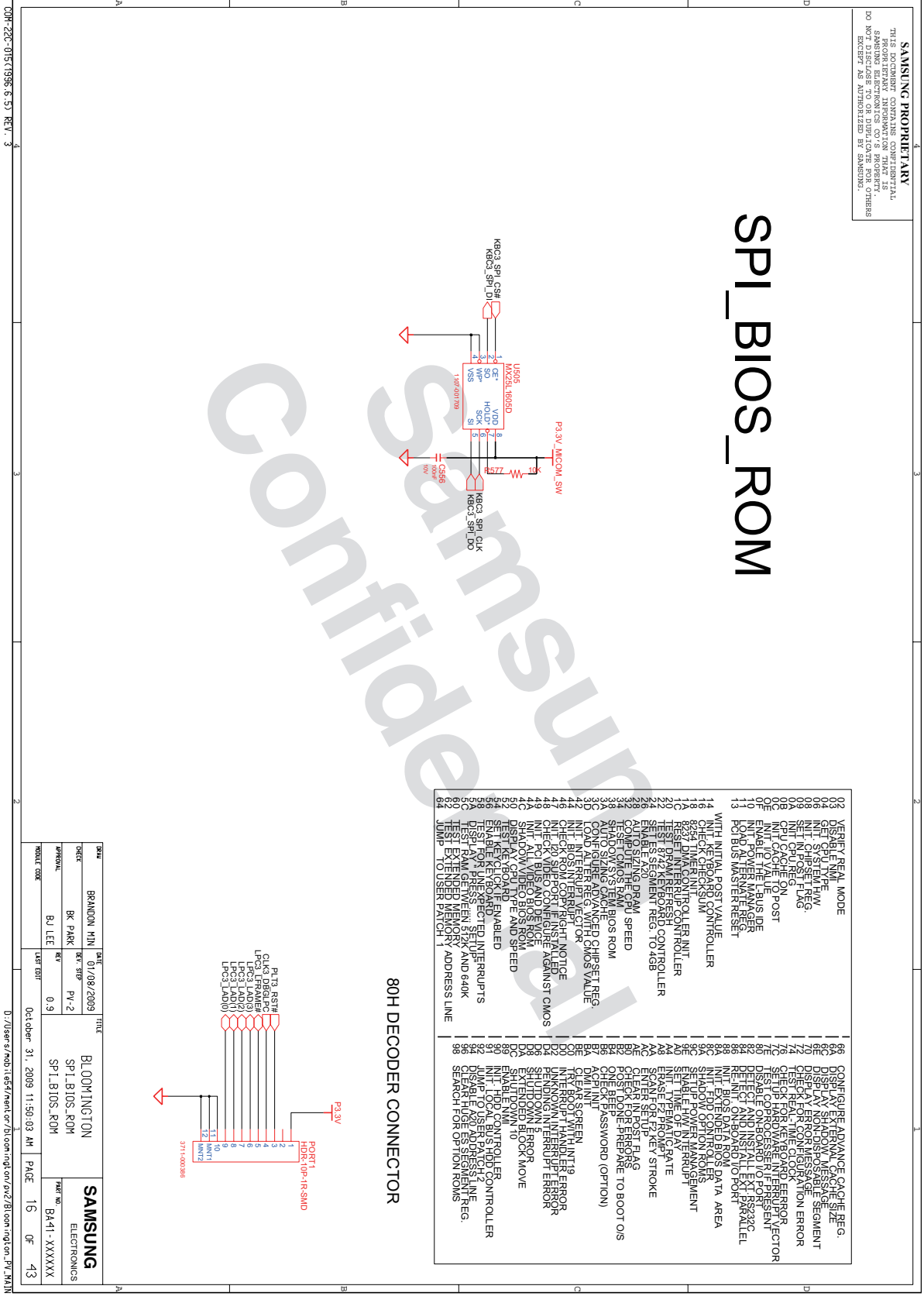
**SAMSUNG PROPRIETARY**  
 THIS DOCUMENT CONTAINS CONFIDENTIAL INFORMATION. ANY DISCLOSURE OF THE INFORMATION CONTAINED HEREIN TO ANY OTHER PERSON WITHOUT THE WRITTEN PERMISSION OF SAMSUNG ELECTRONICS CO.'S PROPERTY. THIS DOCUMENT IS UNCLASSIFIED BY SAMSUNG.



DATE: 01/08/2009		TITLE: BLOWINGTON CHIPSET TIGERPOINT (3/3)	
DESIGNER: BRANDON MIN	DATE: 01/08/2009	SAMSUNG ELECTRONICS	
APPROVAL: BK PARK	REV: Py-2	PART NO: BA-1-XXXXXX	
MODEL CODE: BJ LEE	REV: 0.9	PAGE 15 OF 43	
October 31, 2009 11:50:02 AM		PAGE 15 OF 43	

D:\user\smob1\ef7\rent\cr\bl\com\ng\cr\22\Bl\com\ng\cr\_PV\_MALN

# 8. Block Diagram and Schematic

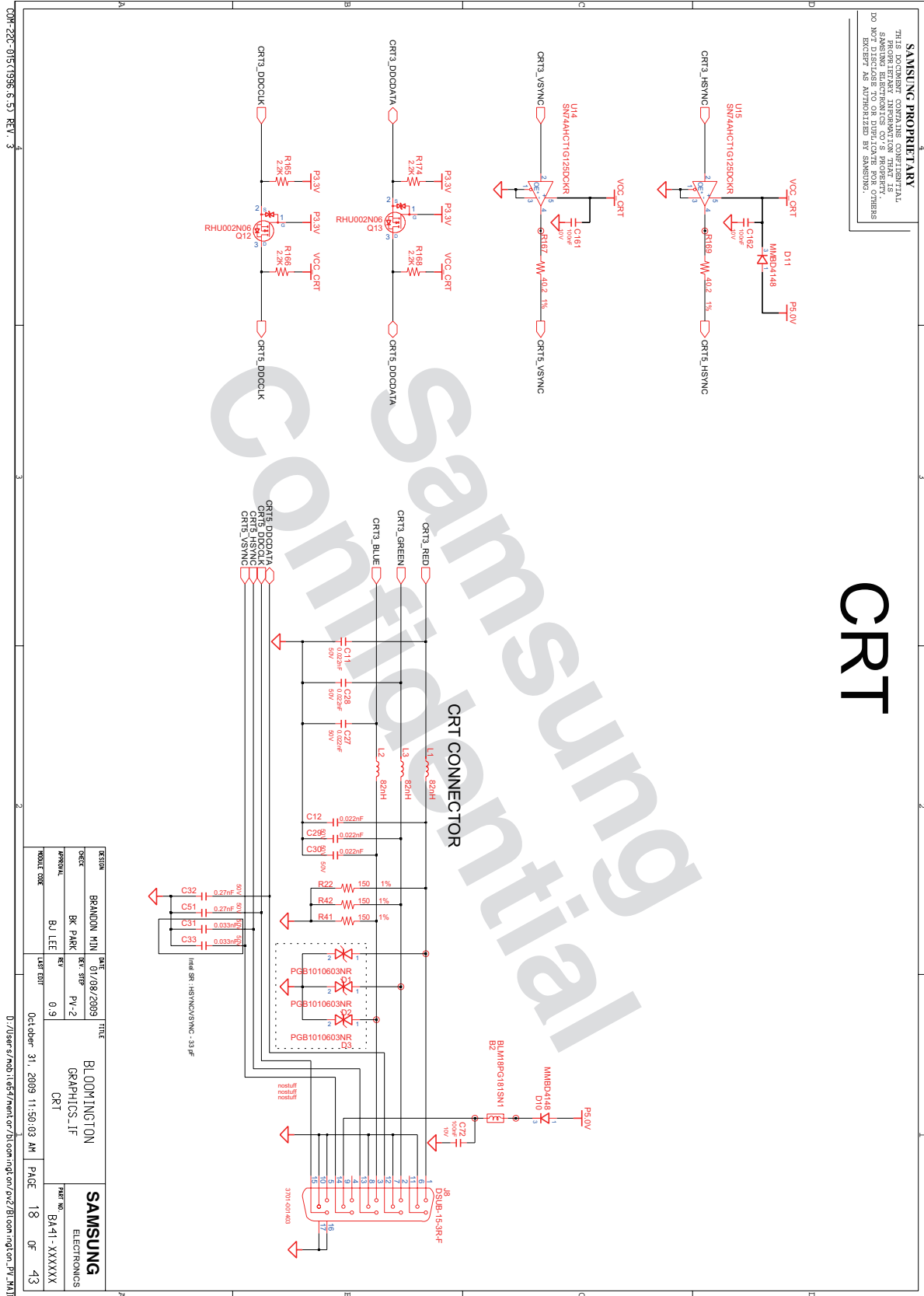




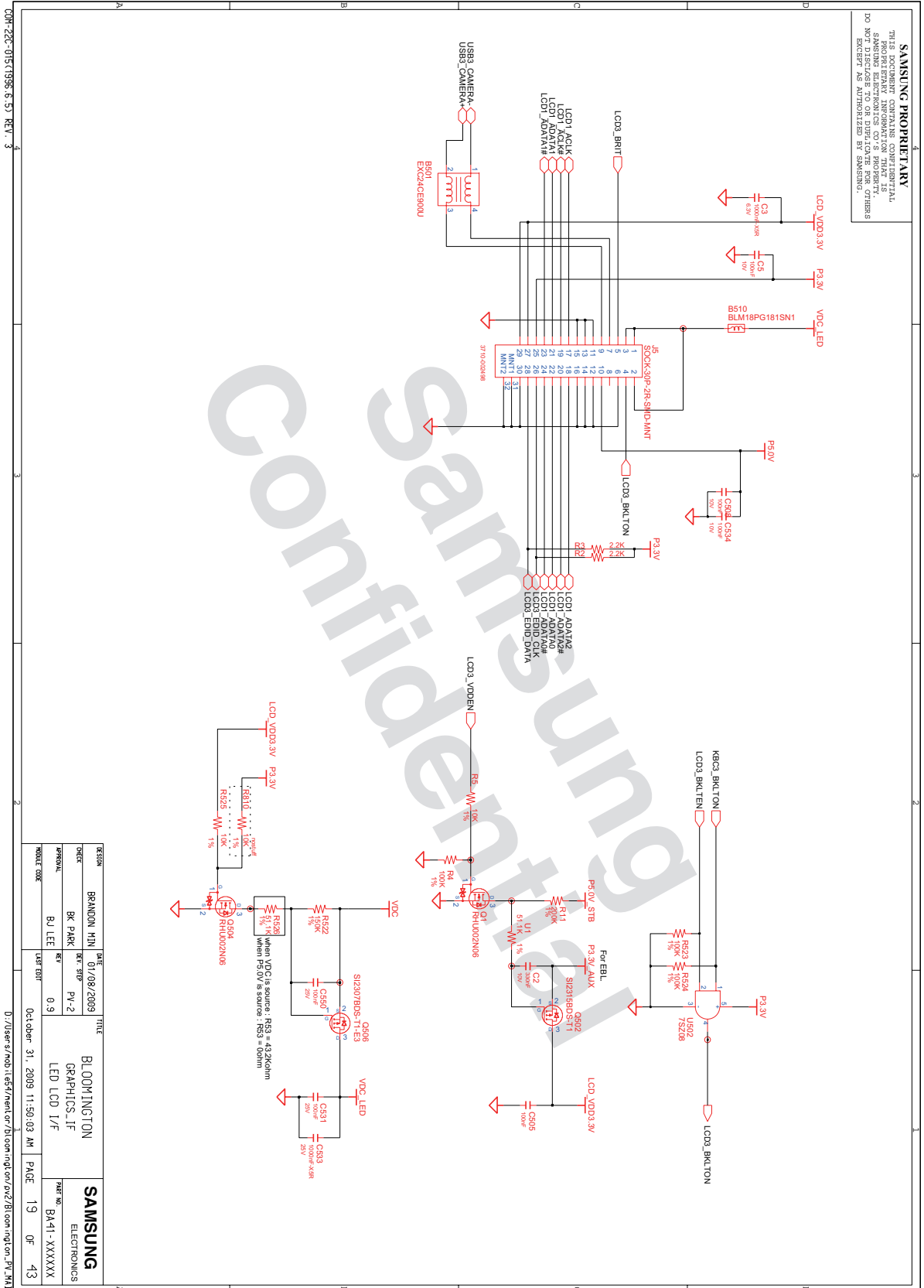


- 이 문서는 삼성전자의 기술 자산으로 승인자만이 사용할 수 있습니다 -  
 - This Document can not be used without Samsung's authorization -

# 8. Block Diagram and Schematic



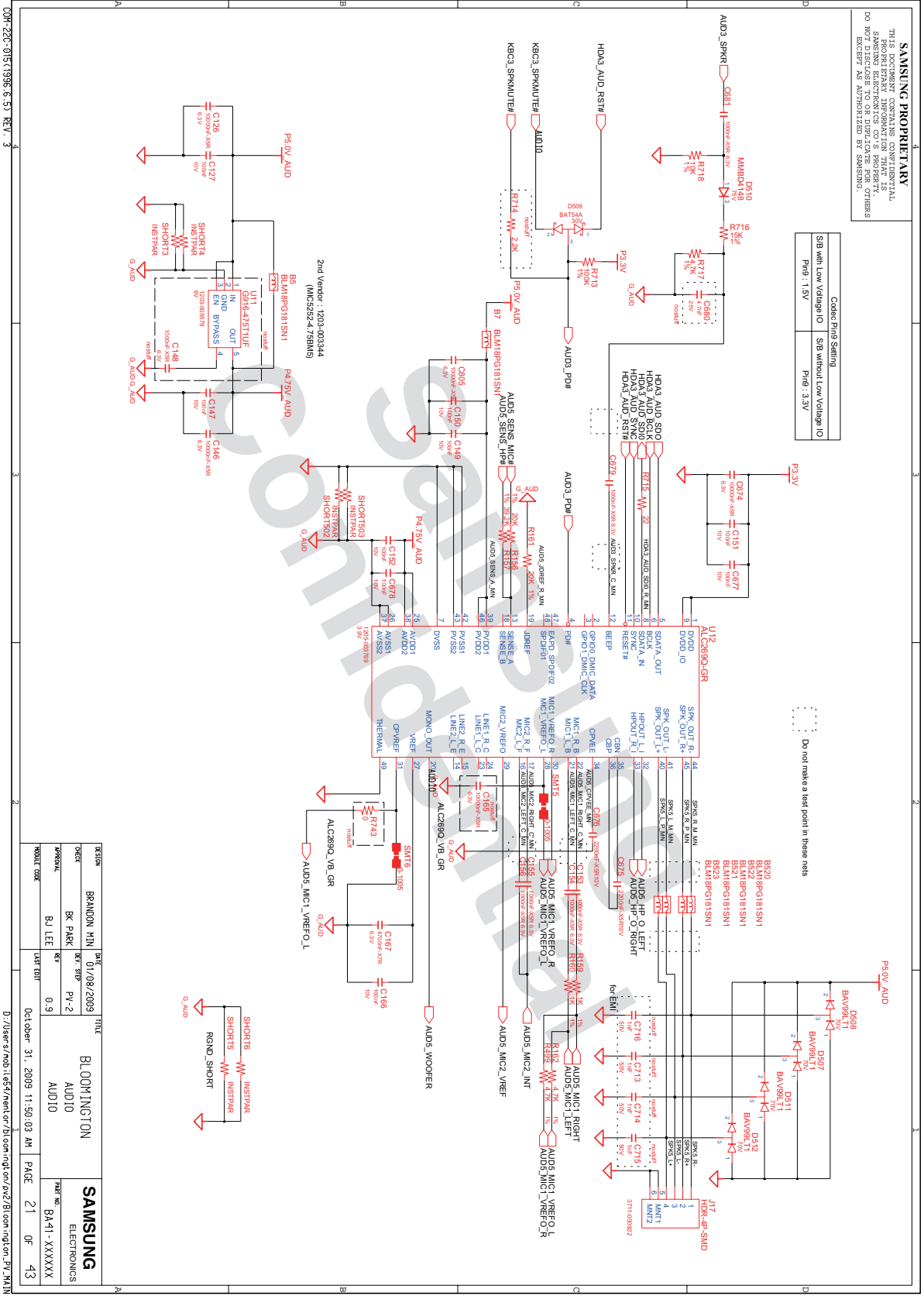
# 8. Block Diagram and Schematic



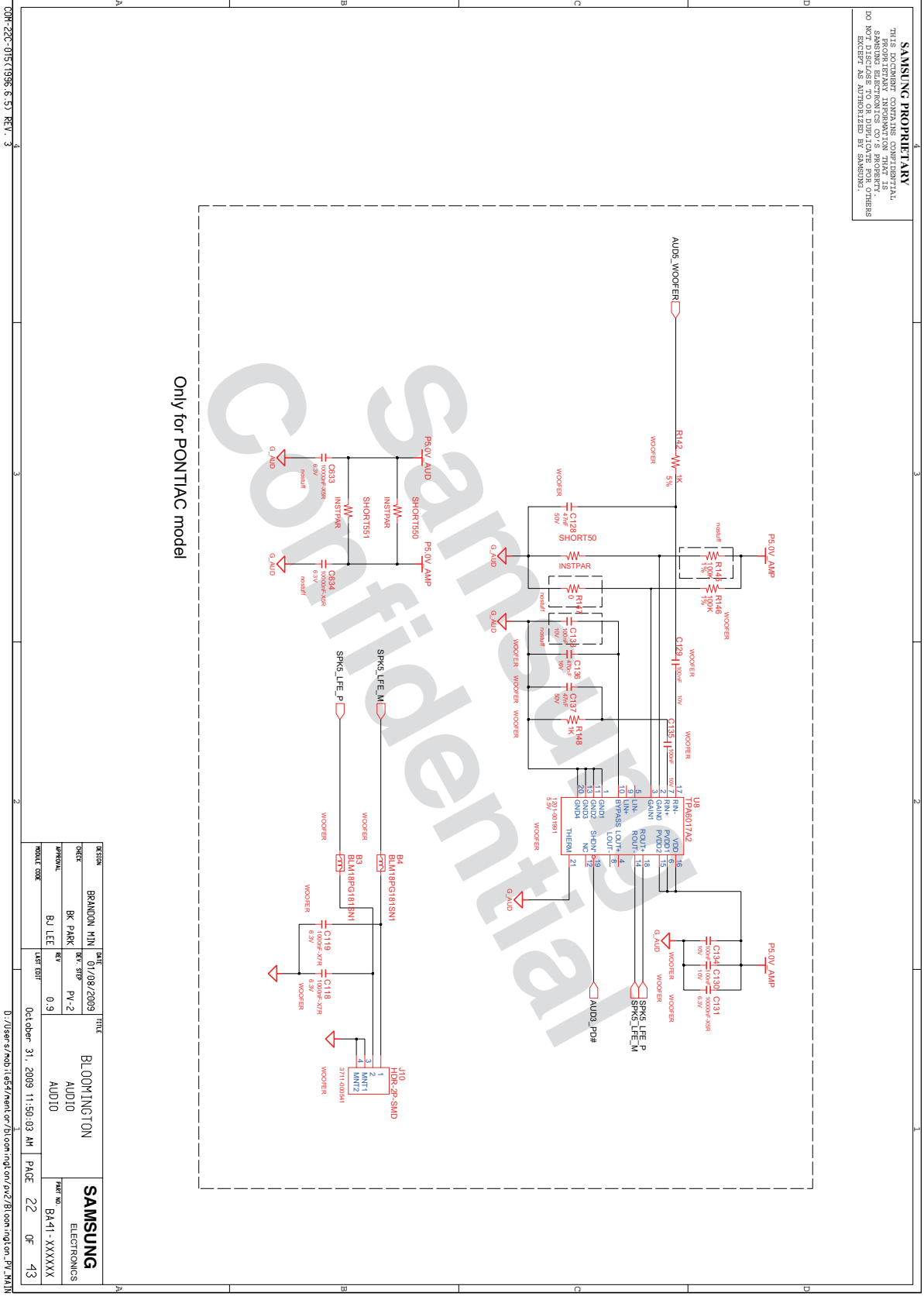


- 이 문서는 삼성전자의 기술 자산으로 승인자만이 사용할 수 있습니다 -
- This Document can not be used without Samsung's authorization -

# 8. Block Diagram and Schematic

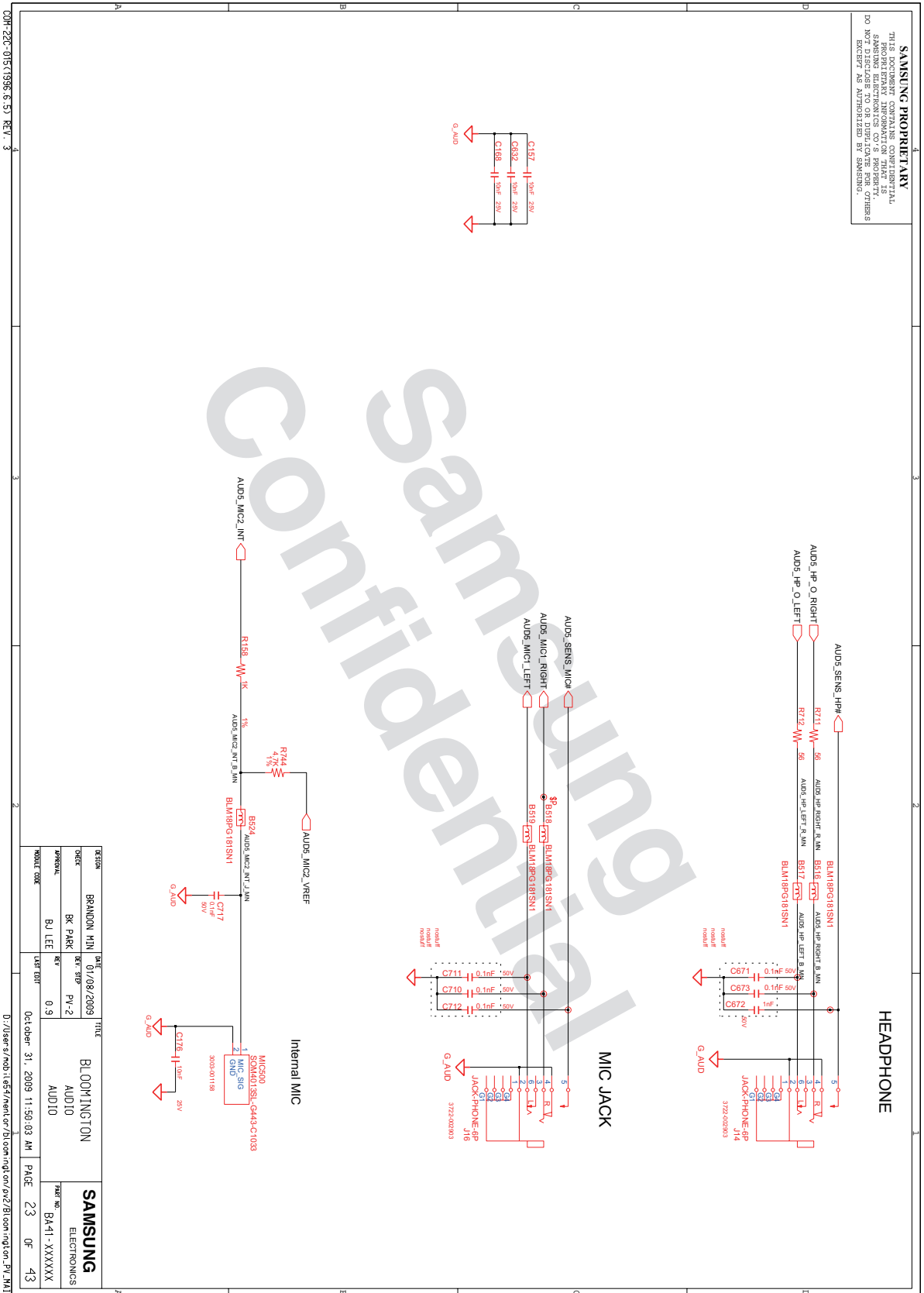


# 8. Block Diagram and Schematic



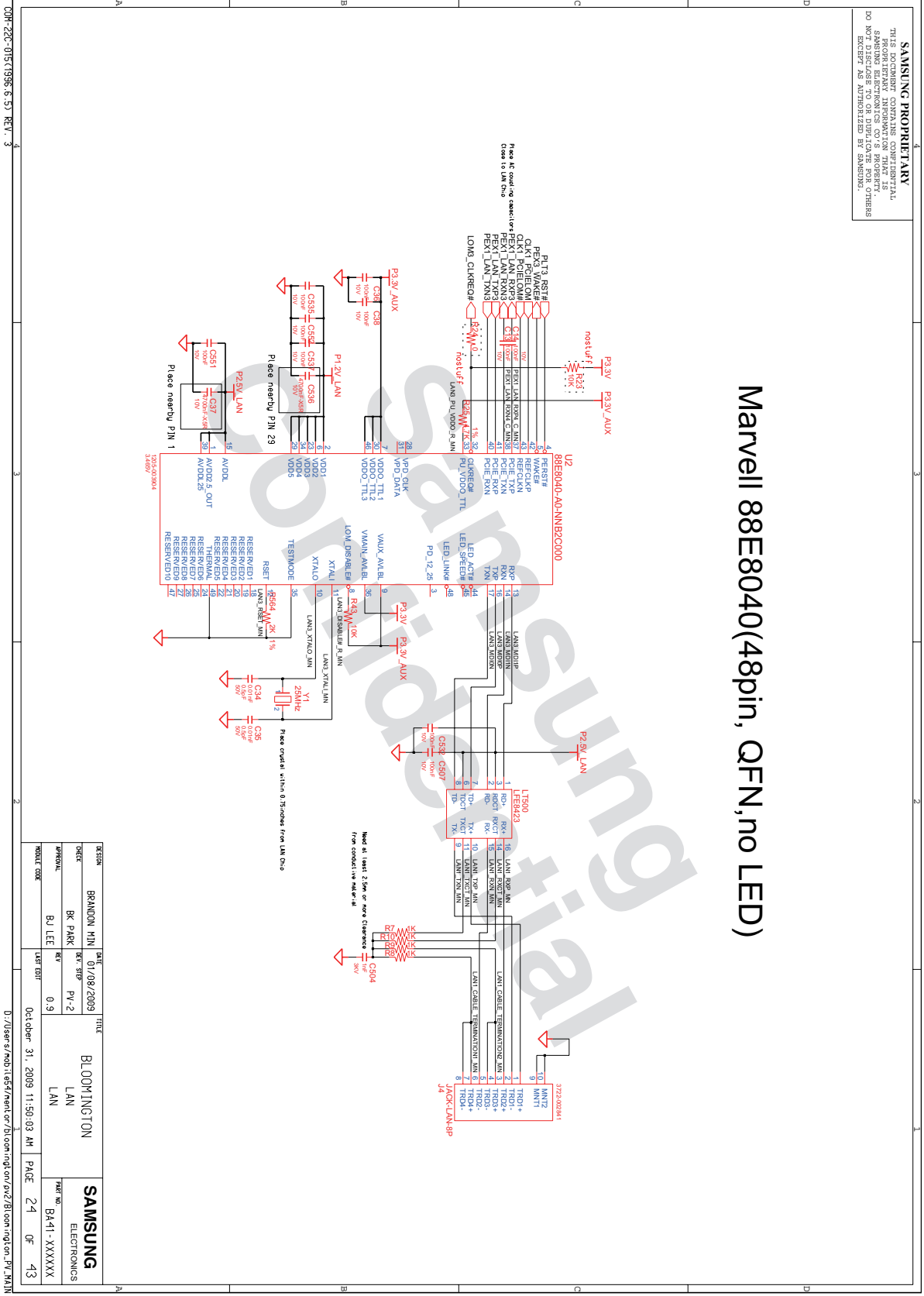
- 이 문서는 삼성전자의 기술 자산으로 승인자만이 사용할 수 있습니다 -  
 - This Document can not be used without Samsung's authorization -

## 8. Block Diagram and Schematic



- 이 문서는 삼성전자의 기술 자산으로 승인자만이 사용할 수 있습니다 -  
 - This Document can not be used without Samsung's authorization -

# 8. Block Diagram and Schematic



**SAMSUNG PROPRIETARY**  
 THIS DOCUMENT CONTAINS CONFIDENTIAL  
 SAMSUNG INFORMATION. IT IS THE PROPERTY OF SAMSUNG ELECTRONICS CO., LTD. AND IS TO BE USED ONLY FOR THE PURPOSES AND IN ACCORDANCE WITH THE TERMS AND CONDITIONS SPECIFIED IN THE LICENSE AGREEMENT. NO PART OF THIS DOCUMENT IS TO BE REPRODUCED OR TRANSMITTED IN ANY FORM OR BY ANY MEANS, ELECTRONIC OR MECHANICAL, INCLUDING PHOTOCOPYING, RECORDING, OR BY ANY INFORMATION STORAGE AND RETRIEVAL SYSTEM, WITHOUT PERMISSION IN WRITING FROM SAMSUNG ELECTRONICS CO., LTD.

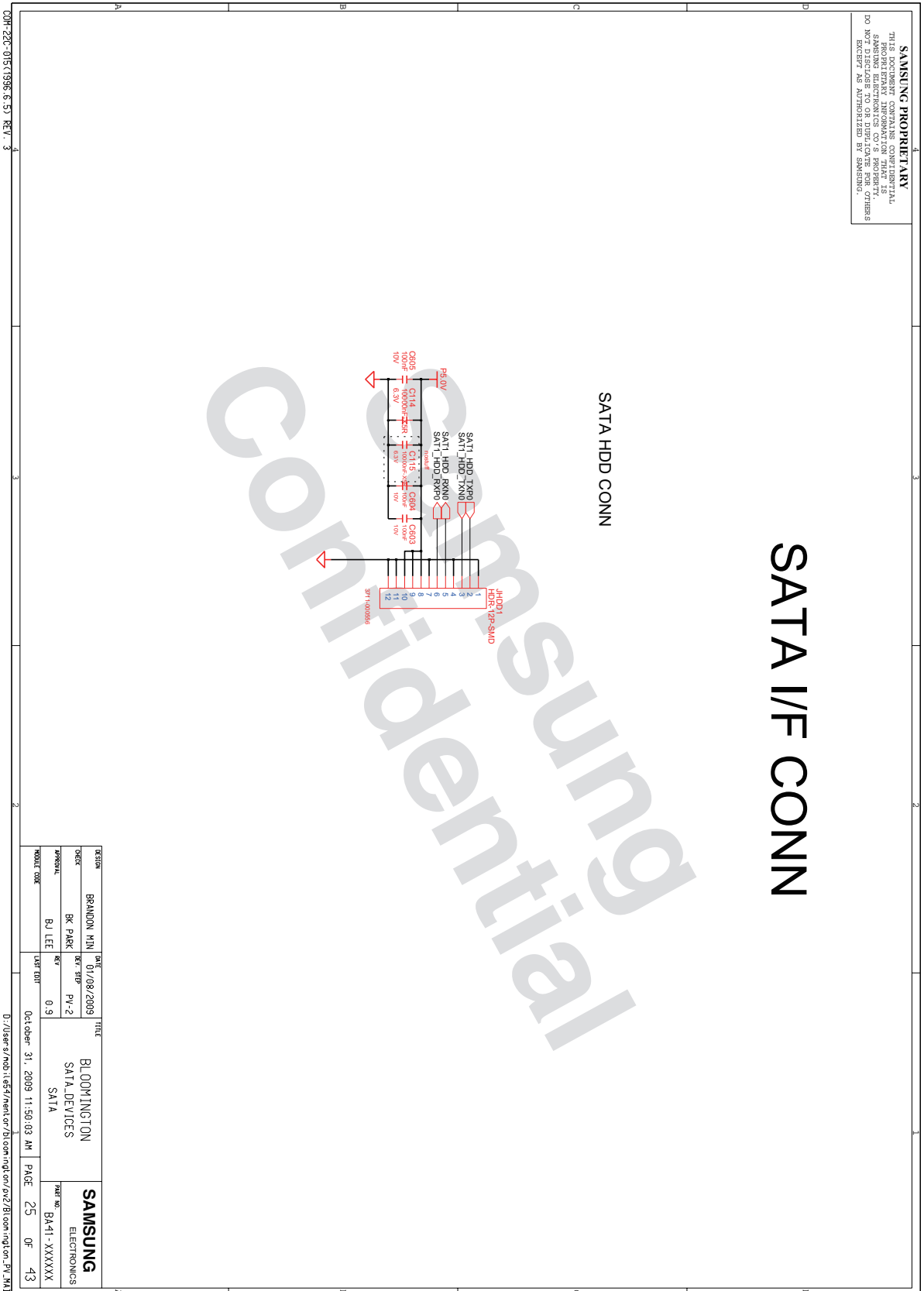
Marvell 88E8040(48pin, QFN,no LED)

DESIGN	BRANDON MIN	DATE	01/08/2009	TITLE	BLOOMINGTON	SAMSUNG	
DRAWN	BK PARK	REV	PV-2	LAN	LAN	ELECTRONICS	
APPROVAL	BJ LEE	REV	0-9	LAN	LAN	XXXXXXXX	
MODEL CODE		LISTEN					
D:\Users\moo116577\work\Bloomington\Bloomington_PV_MAIN				DATE	Oct 08 11:50:03 AM	PAGE	24
				OF	43		



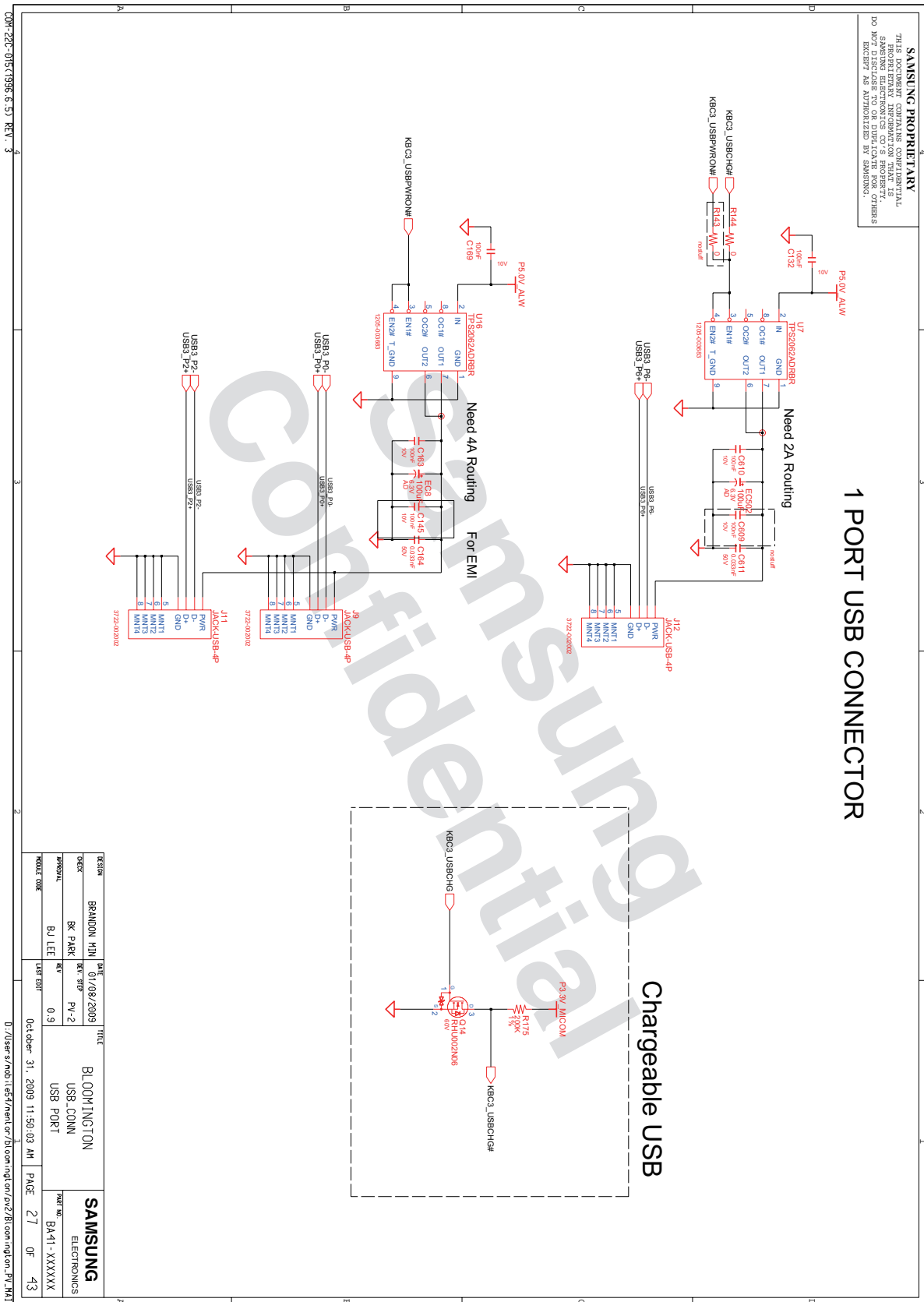
- 이 문서는 삼성전자의 기술 자산으로 승인자만이 사용할 수 있습니다 -  
 - This Document can not be used without Samsung's authorization -

## 8. Block Diagram and Schematic





## 8. Block Diagram and Schematic



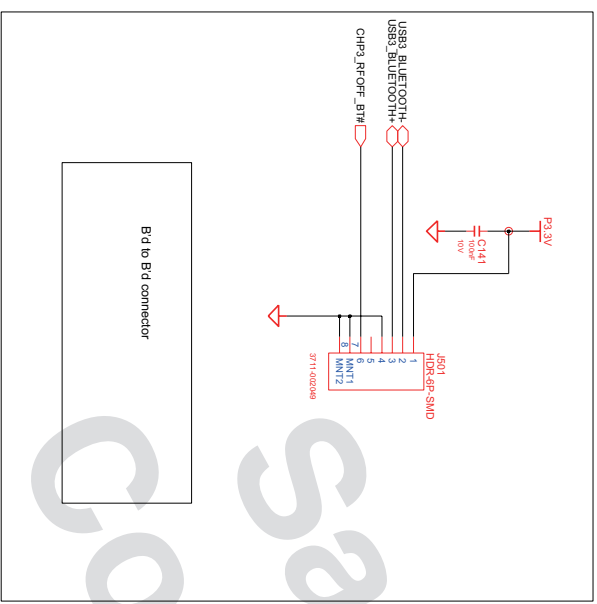
- 이 문서는 삼성전자의 기술 자산으로 승인자만이 사용할 수 있습니다 -  
 - This Document can not be used without Samsung's authorization -

# 8. Block Diagram and Schematic

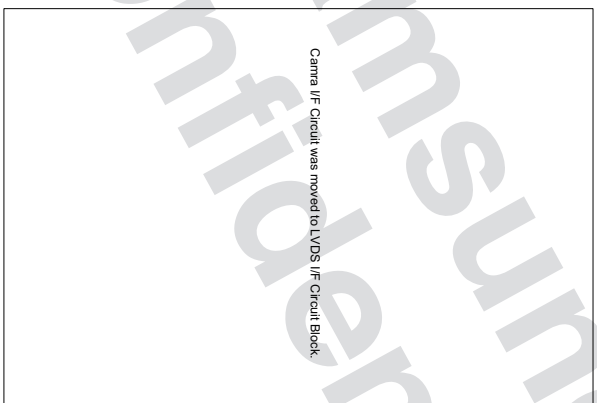
**SAMSUNG PROPRIETARY**  
 THIS DOCUMENT CONTAINS CONFIDENTIAL  
 SAMSUNG INFORMATION THAT IS  
 UNLAWFULLY DISCLOSED TO OTHERS  
 EXCEPT AS AUTHORIZED BY SAMSUNG.

## USB I/F Devices

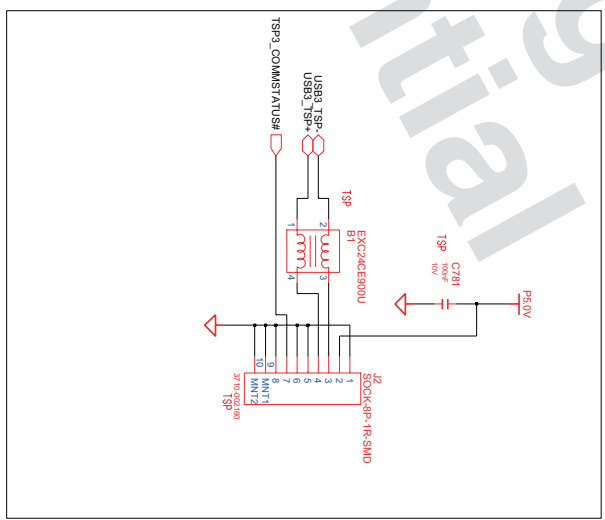
### Bluetooth Interface



### CAMERA



### TSP(Only for Lincon Model)

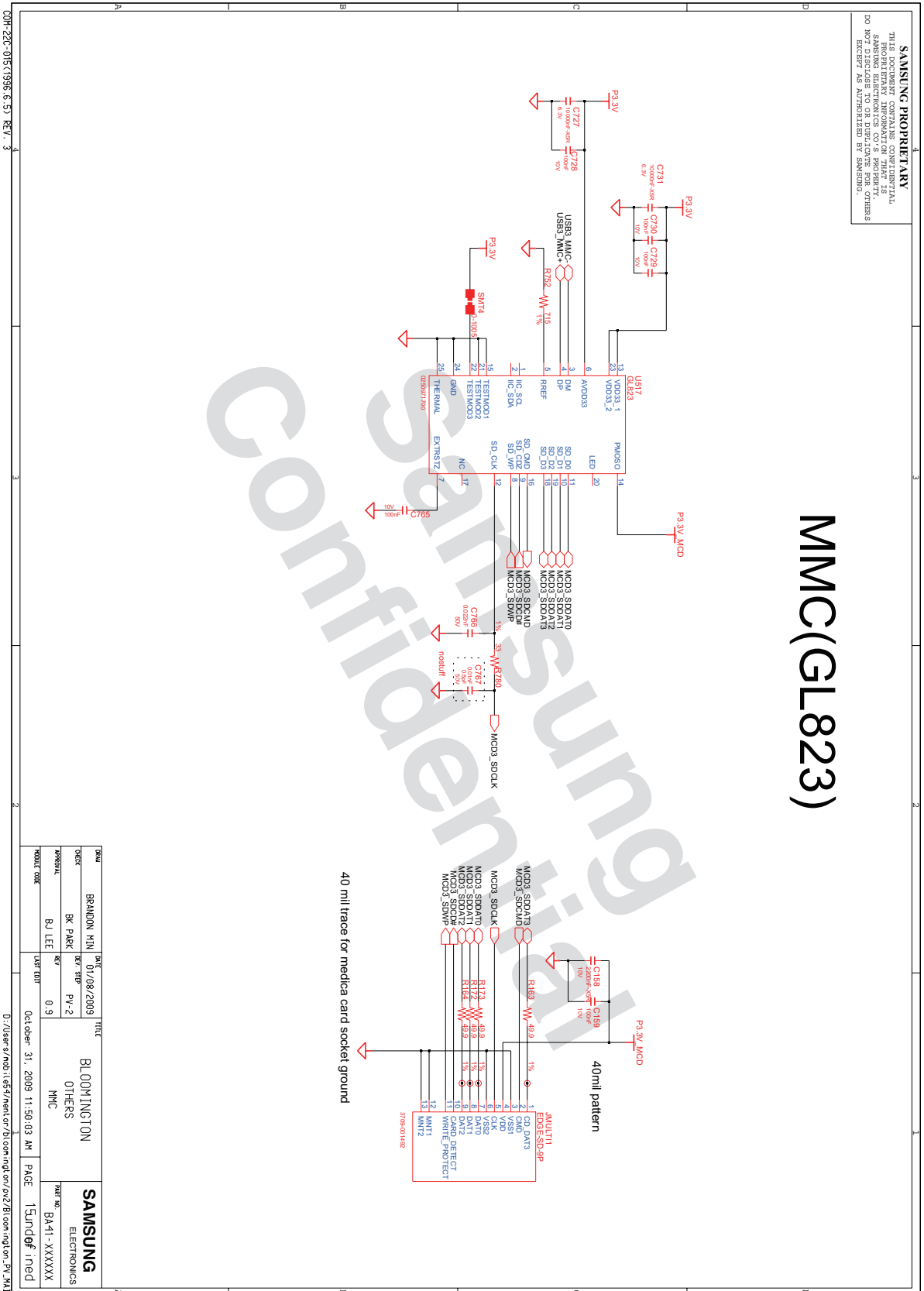


COM-22C-015(1998.6.5) REV. 3

DESIGN	BRANDON MIN	DATE	01/08/2009	TITLE	BLOOMINGTON	SAMSUNG
DRAWN	BK PARK	REV.	PV-2	USB DEVICES	ELECTRONICS	
APPROVE	BJ LEE	REV.	0.9	BLUETOOTH CAMERA		
MODEL CODE		LAST EDIT	Oct 08 11:50:03 AM	PAGE	28	OF
					43	

D:\Users\mbo118547\ndc\or\Di\com\ngt\or\qv2\Bloomington\_PV\_MAIN

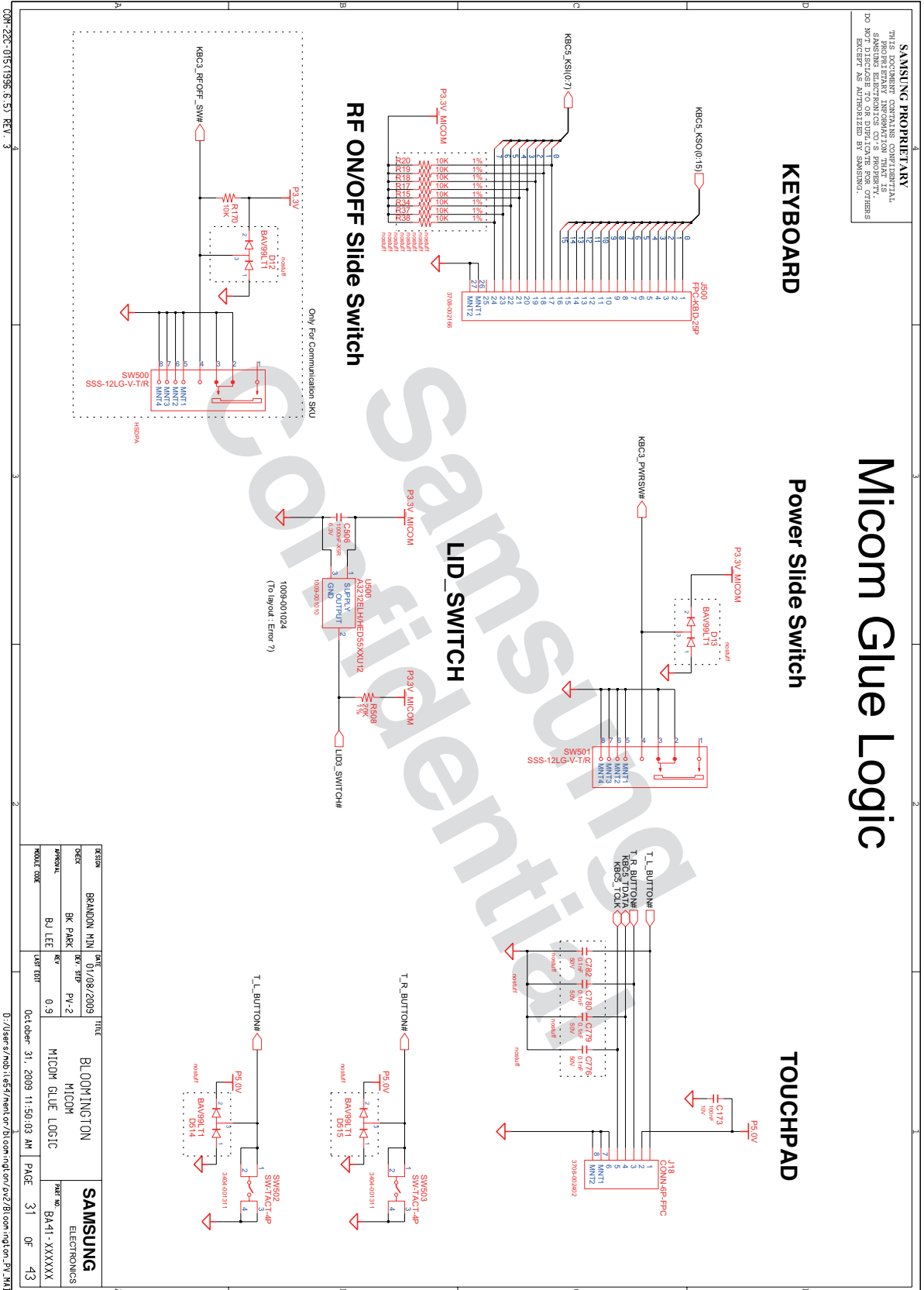
## 8. Block Diagram and Schematic



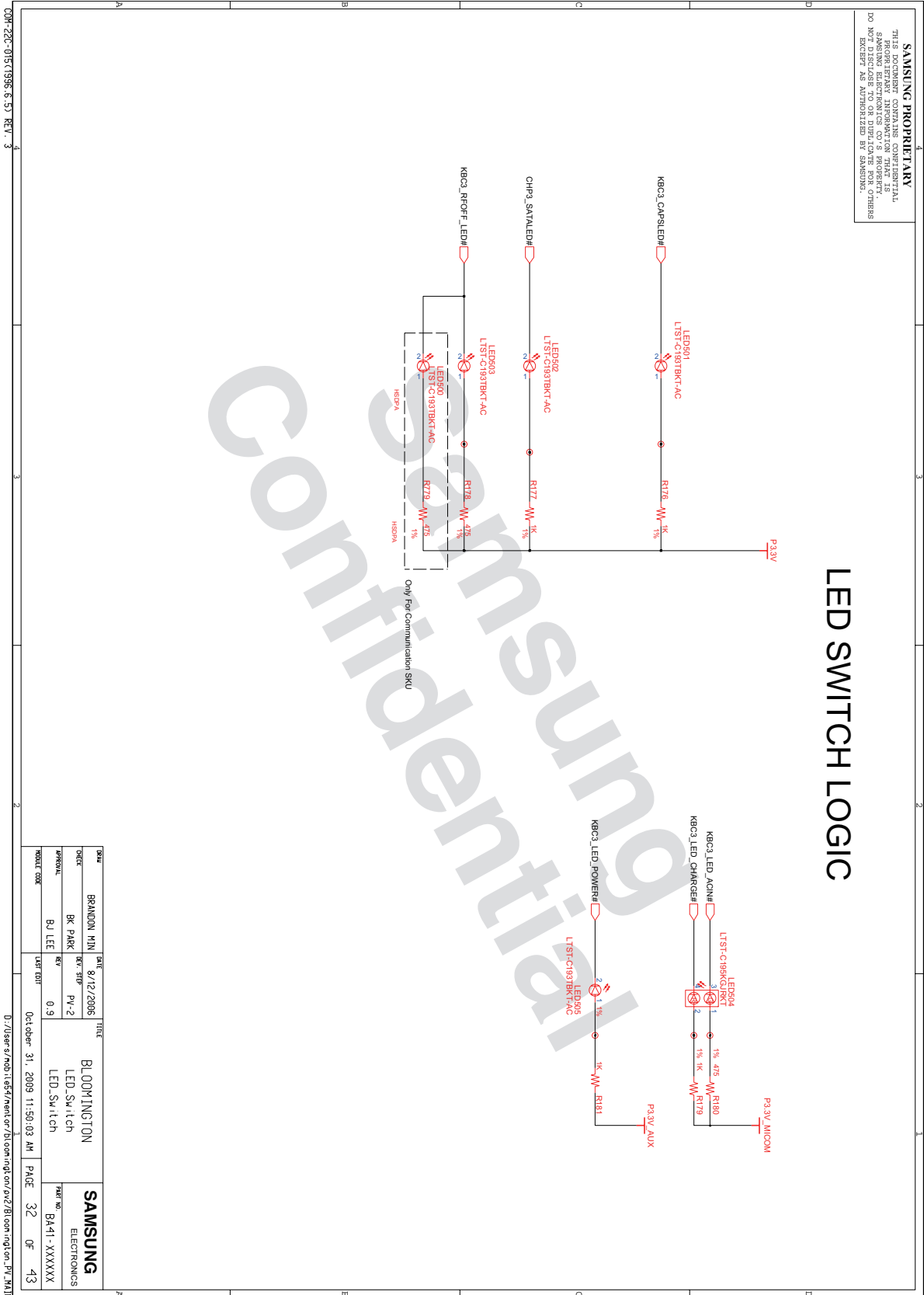


- 이 문서는 삼성전자의 기술 자산으로 승인자만이 사용할 수 있습니다 -
- This Document can not be used without Samsung's authorization -

# 8. Block Diagram and Schematic



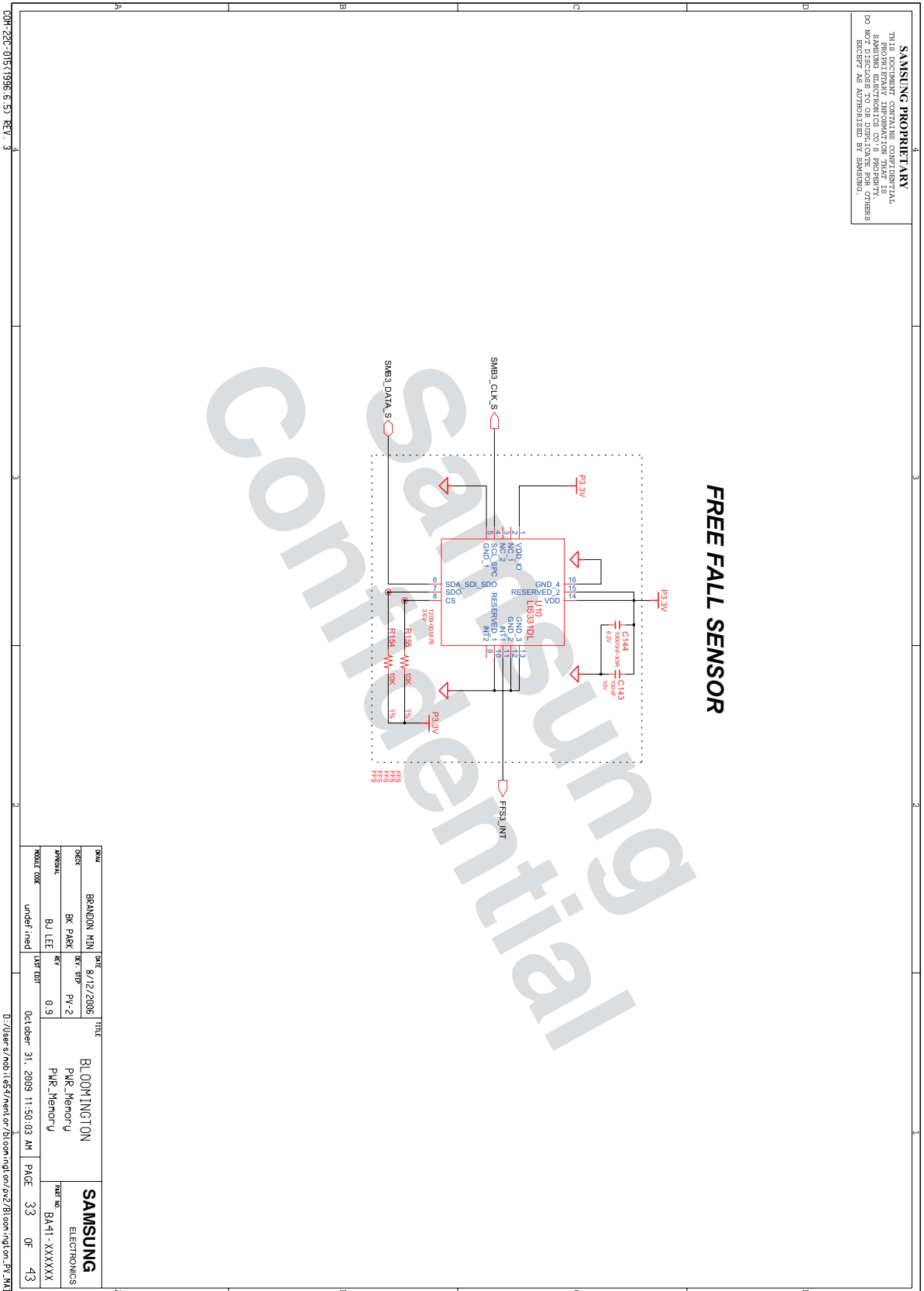
# 8. Block Diagram and Schematic



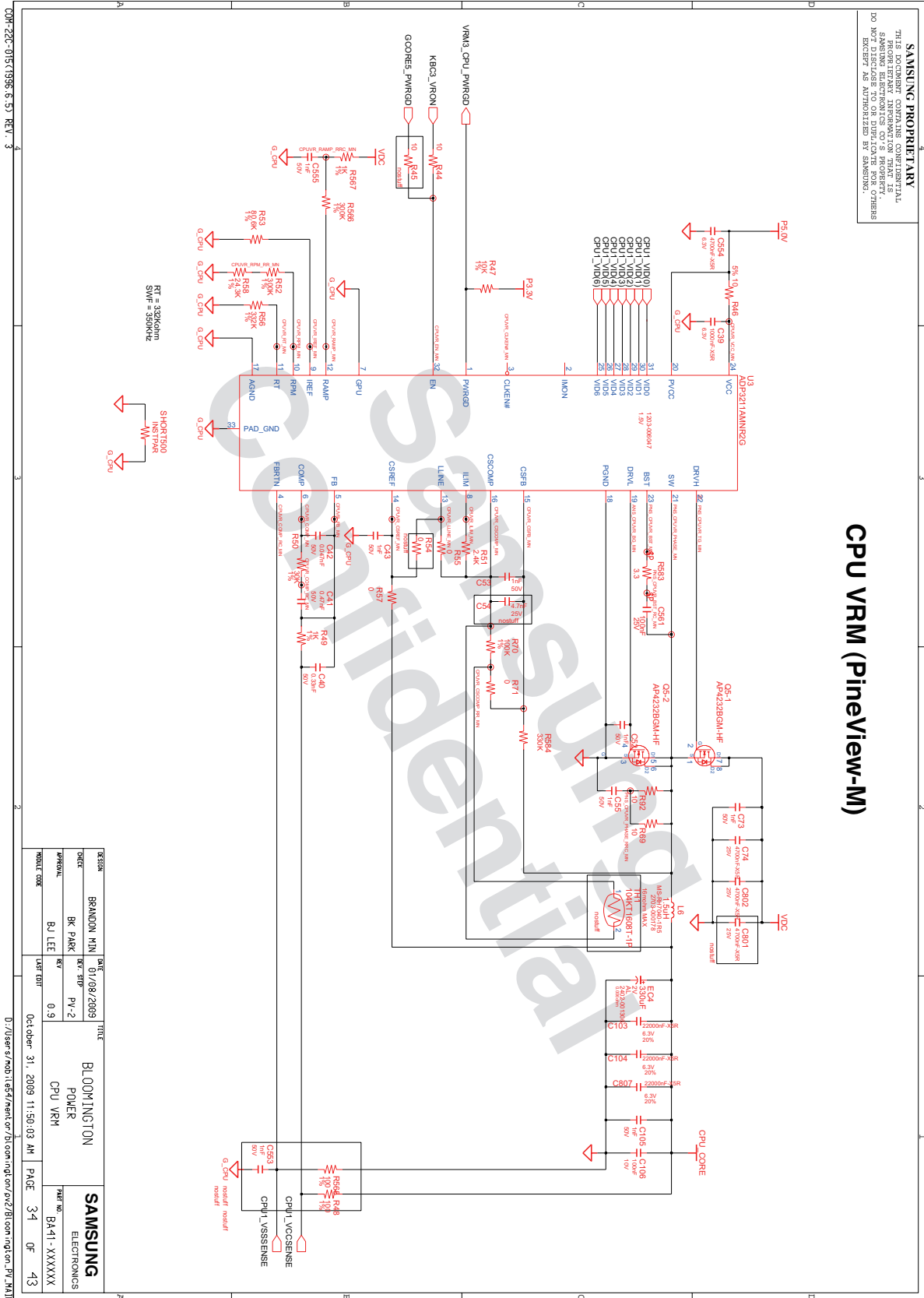


- 이 문서는 삼성전자의 기술 자산으로 승인자만이 사용할 수 있습니다 -
- This Document can not be used without Samsung's authorization -

## 8. Block Diagram and Schematic

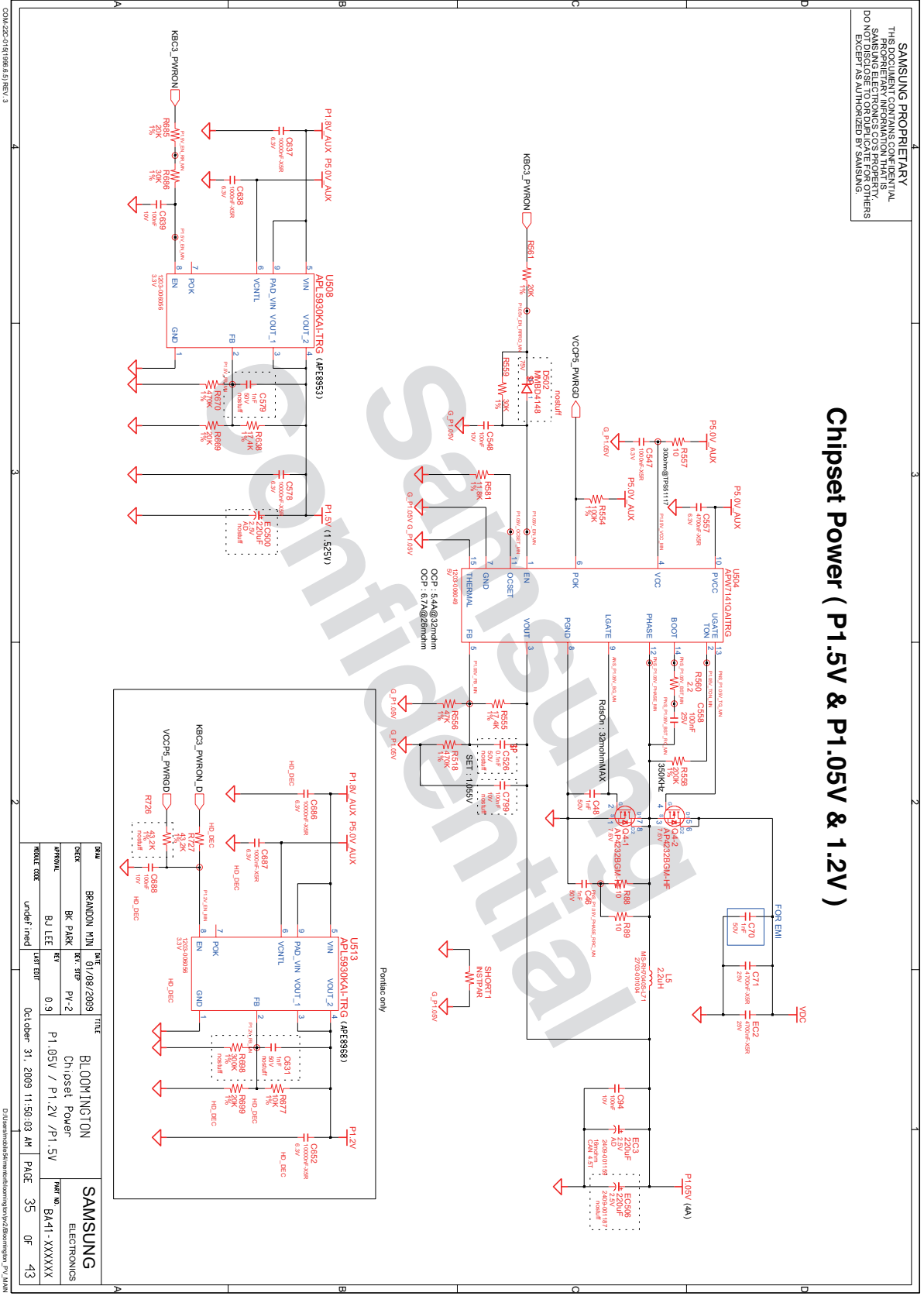


# 8. Block Diagram and Schematic



- 이 문서는 삼성전자의 기술 자산으로 승인자만이 사용할 수 있습니다 -
- This Document can not be used without Samsung's authorization -

# 8. Block Diagram and Schematic

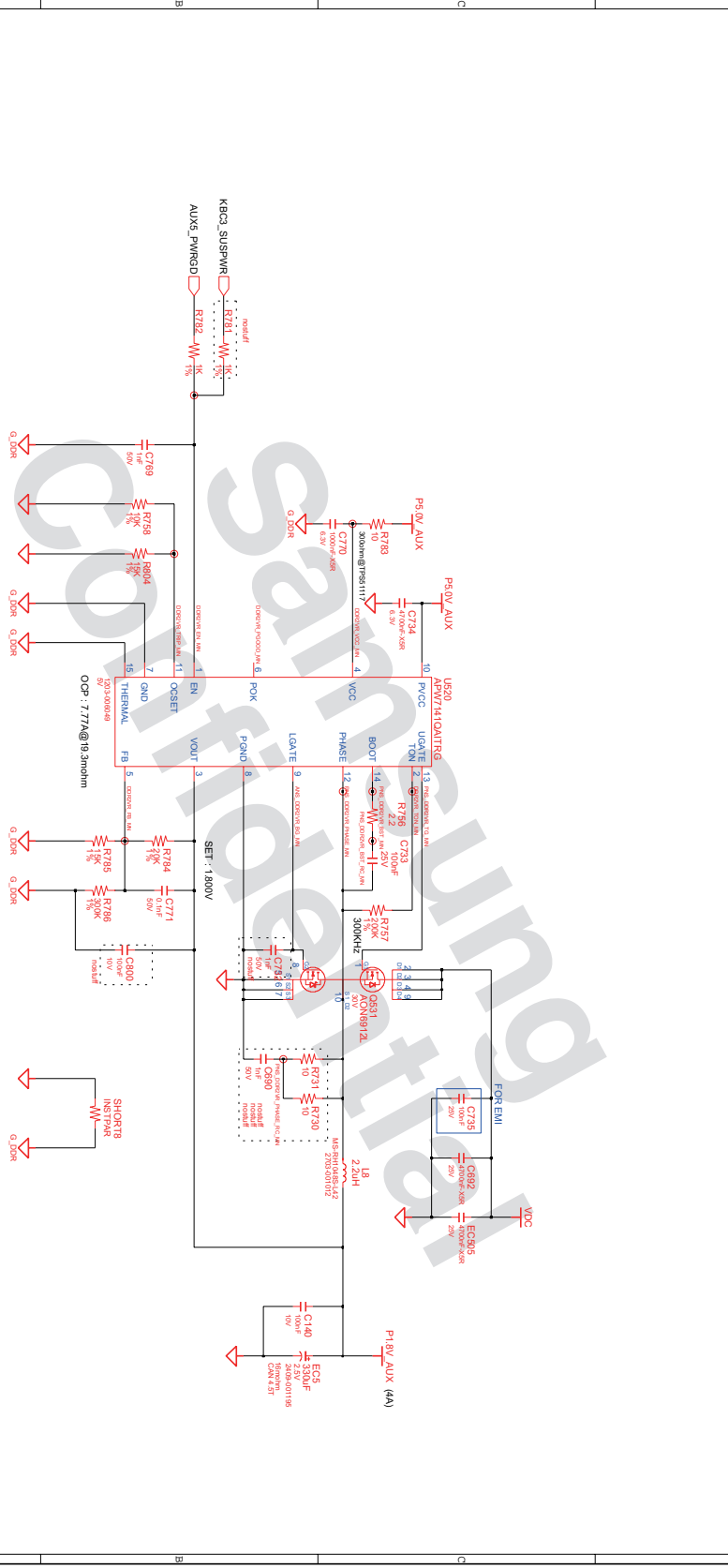


- 이 문서는 삼성전자의 기술 자산으로 승인자만이 사용할 수 있습니다 -
- This Document can not be used without Samsung's authorization -

## 8. Block Diagram and Schematic

SAMSUNG PROPRIETARY  
 THIS DOCUMENT CONTAINS CONFIDENTIAL  
 SAMSUNG INFORMATION THAT IS  
 PROPRIETARY INFORMATION THAT IS  
 NOT TO BE DISCLOSED TO OR USED BY OTHERS  
 EXCEPT AS AUTHORIZED BY SAMSUNG.

### DDR2 Power ( P1.8V\_AUX )



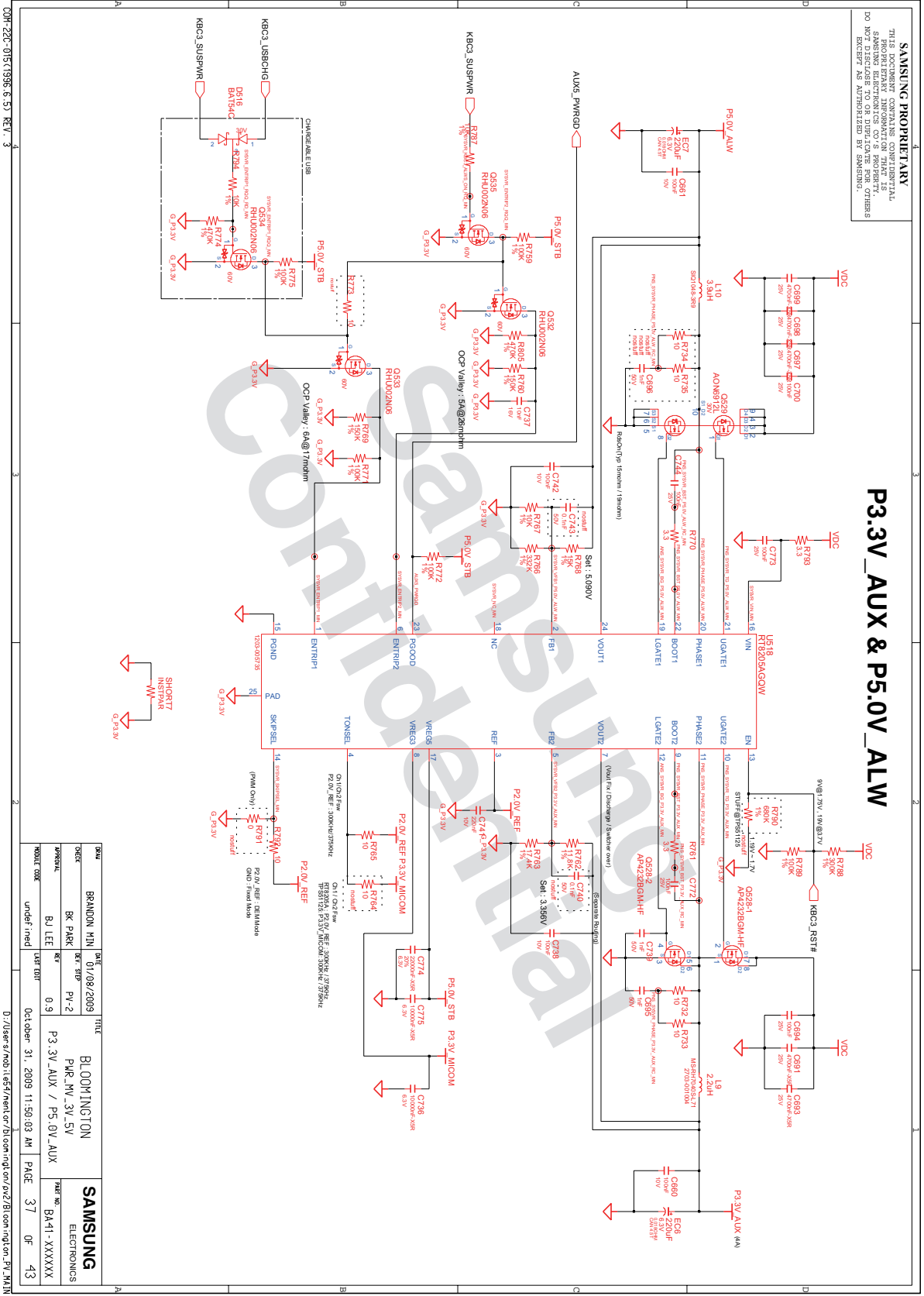
COM-22C-015(1996.6.5) REV. 3

REV	DATE	TITLE	SAMSUNG
BRANDON MIN	01/08/2009	BLOOMINGTON	ELECTRONICS
BK PARK	PV-2	PKR_Memorij	XXXXXXXX
BYUNG	0.9	P1.8V_AUX	
BJ LEE			
UNDER NEED	October 31, 2009 11:50:03 AM	PAGE 36	OF 43

D:\Users\mob118547\work\Bloomington\Bloomington\_PV\_MAIN

- 이 문서는 삼성전자의 기술 자산으로 승인자만이 사용할 수 있습니다 -
- This Document can not be used without Samsung's authorization -

# 8. Block Diagram and Schematic

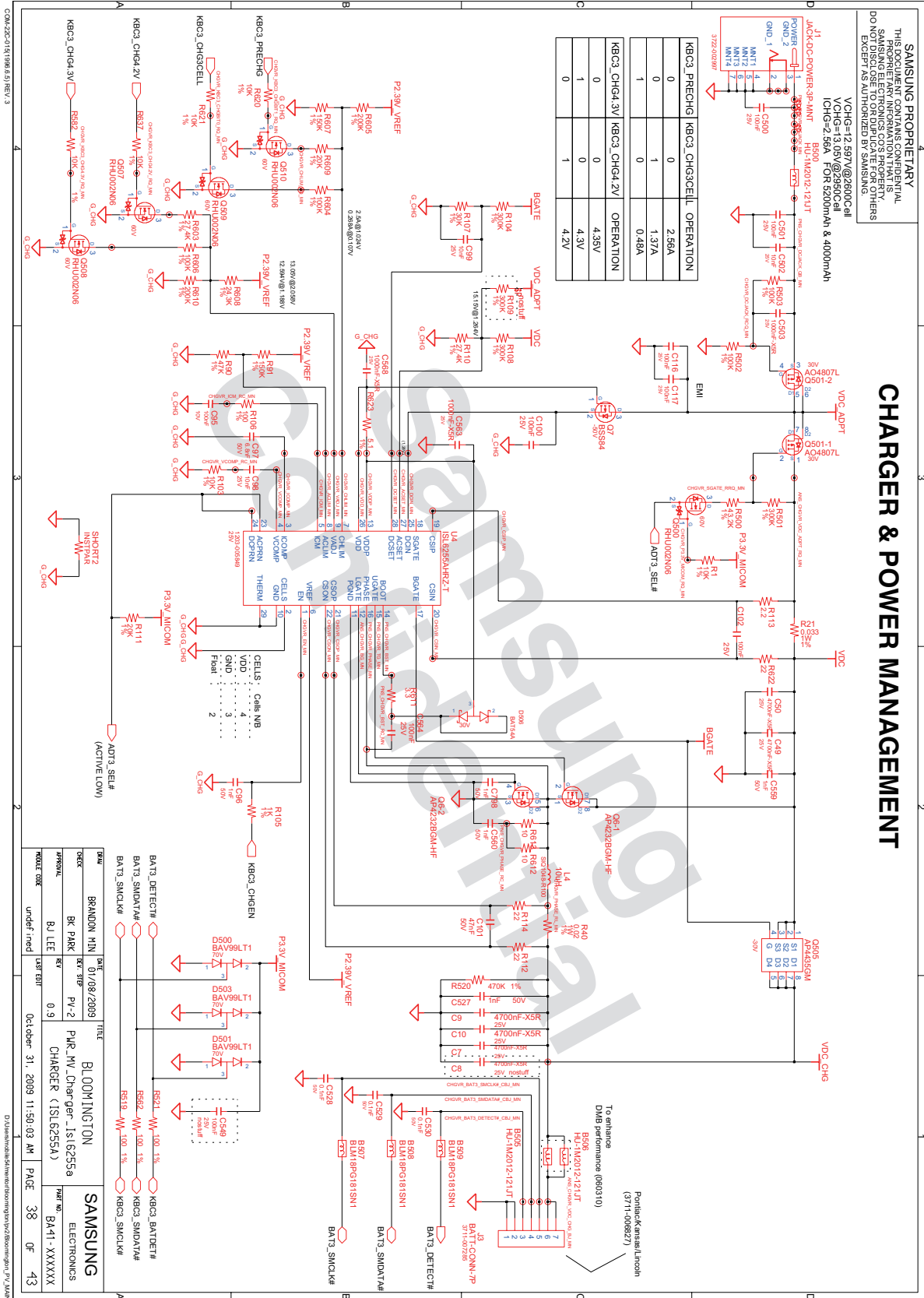


COF-22C-015(1995.6.5) REV. 3

DATE	01/08/2009	TITLE	BLOWINGTON
DESIGNER	BRANDON MIN	PAR.	P3.3V_AUX / P5.0V_AUX
CHKD	BK PARK	REV.	Pv-2
APPROVAL	BJ LEE	DATE	0.9
MODEL CODE	Under final	DATE	October 31, 2009 11:50:03 AM
		PAGE	37
		OF	43

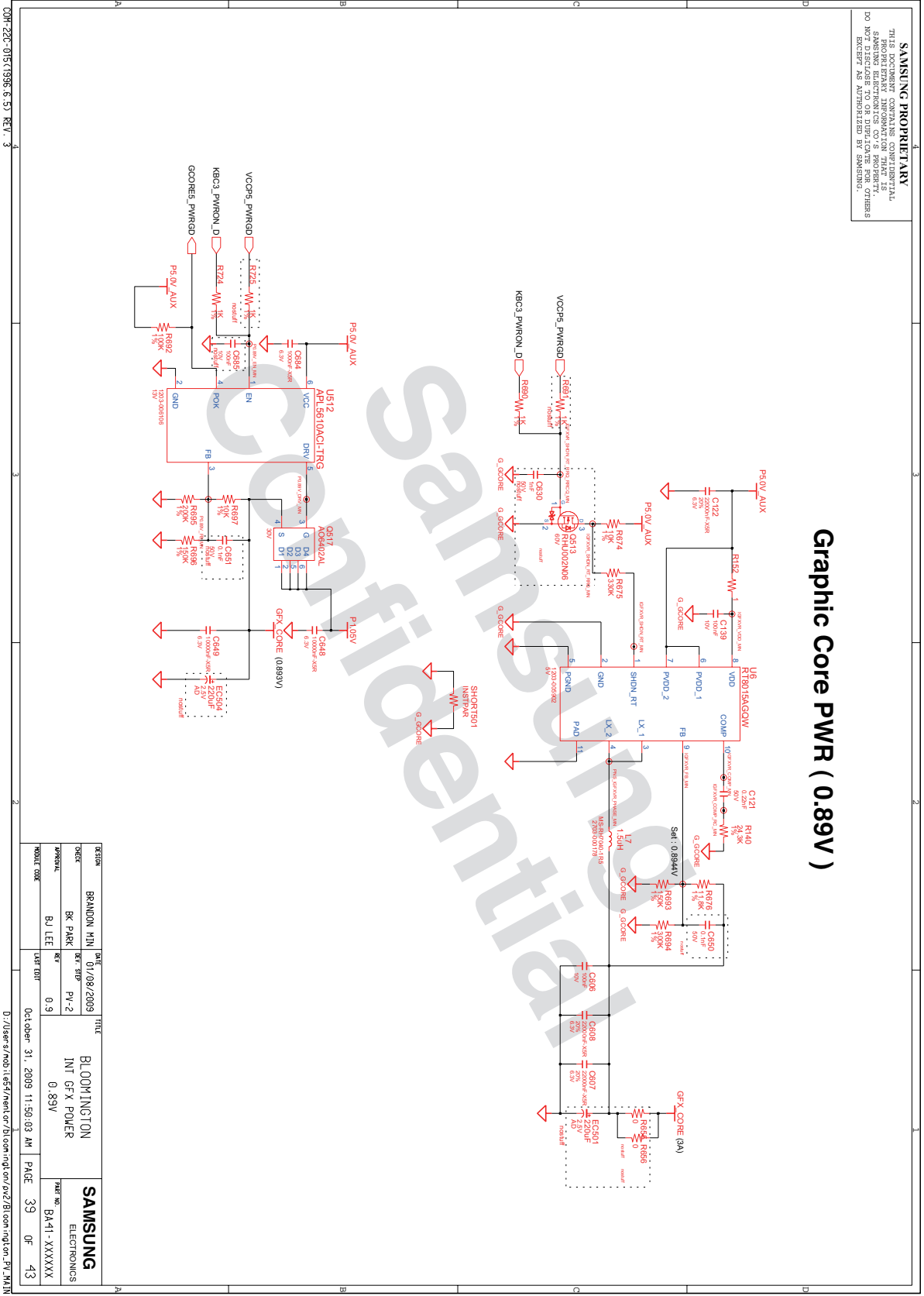
- 이 문서는 삼성전자의 기술 자산으로 승인자만이 사용할 수 있습니다 -  
 - This Document can not be used without Samsung's authorization -

# 8. Block Diagram and Schematic

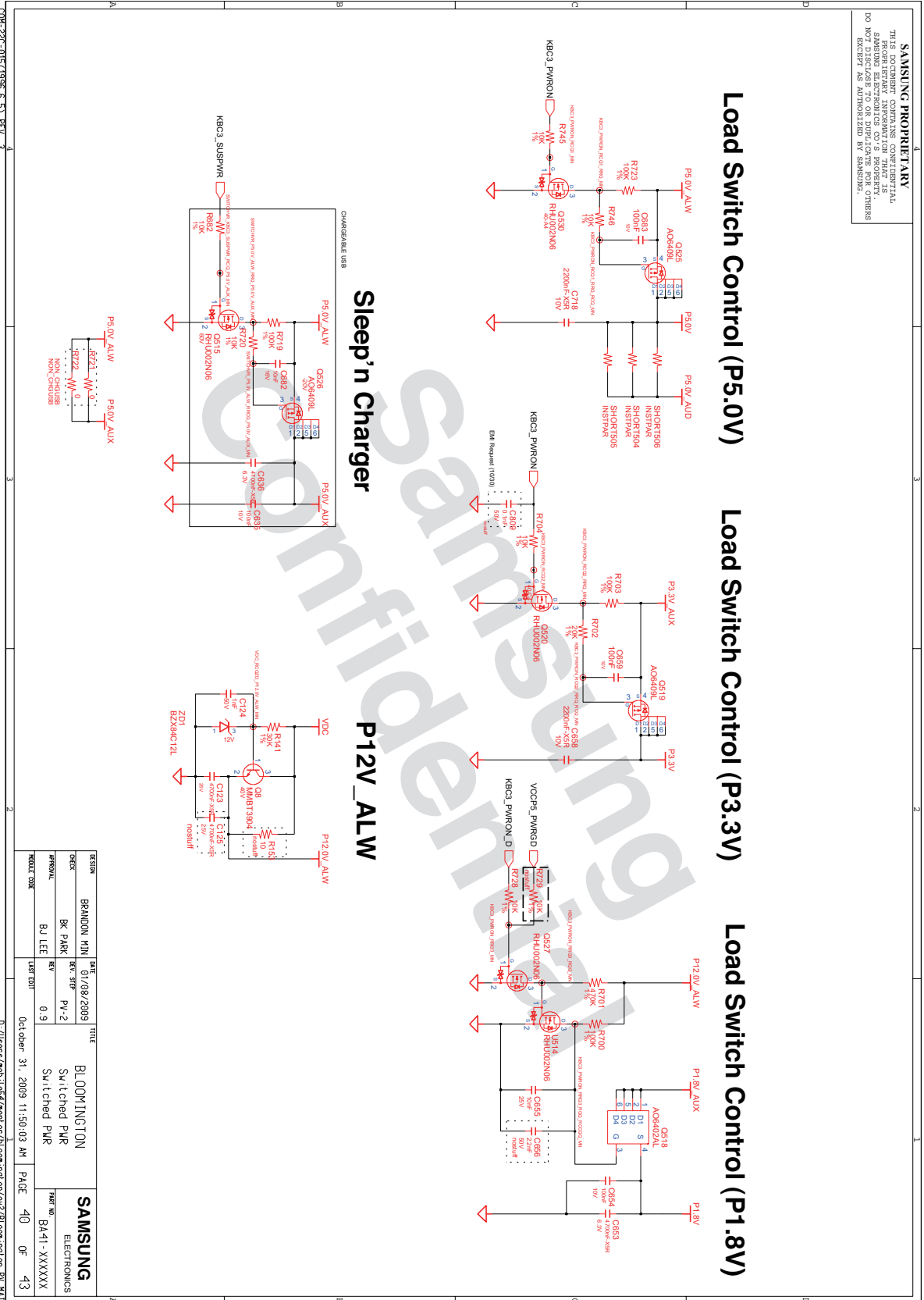


- 이 문서는 삼성전자의 기술 자산으로 승인자만이 사용할 수 있습니다 -
- This Document can not be used without Samsung's authorization -

# 8. Block Diagram and Schematic

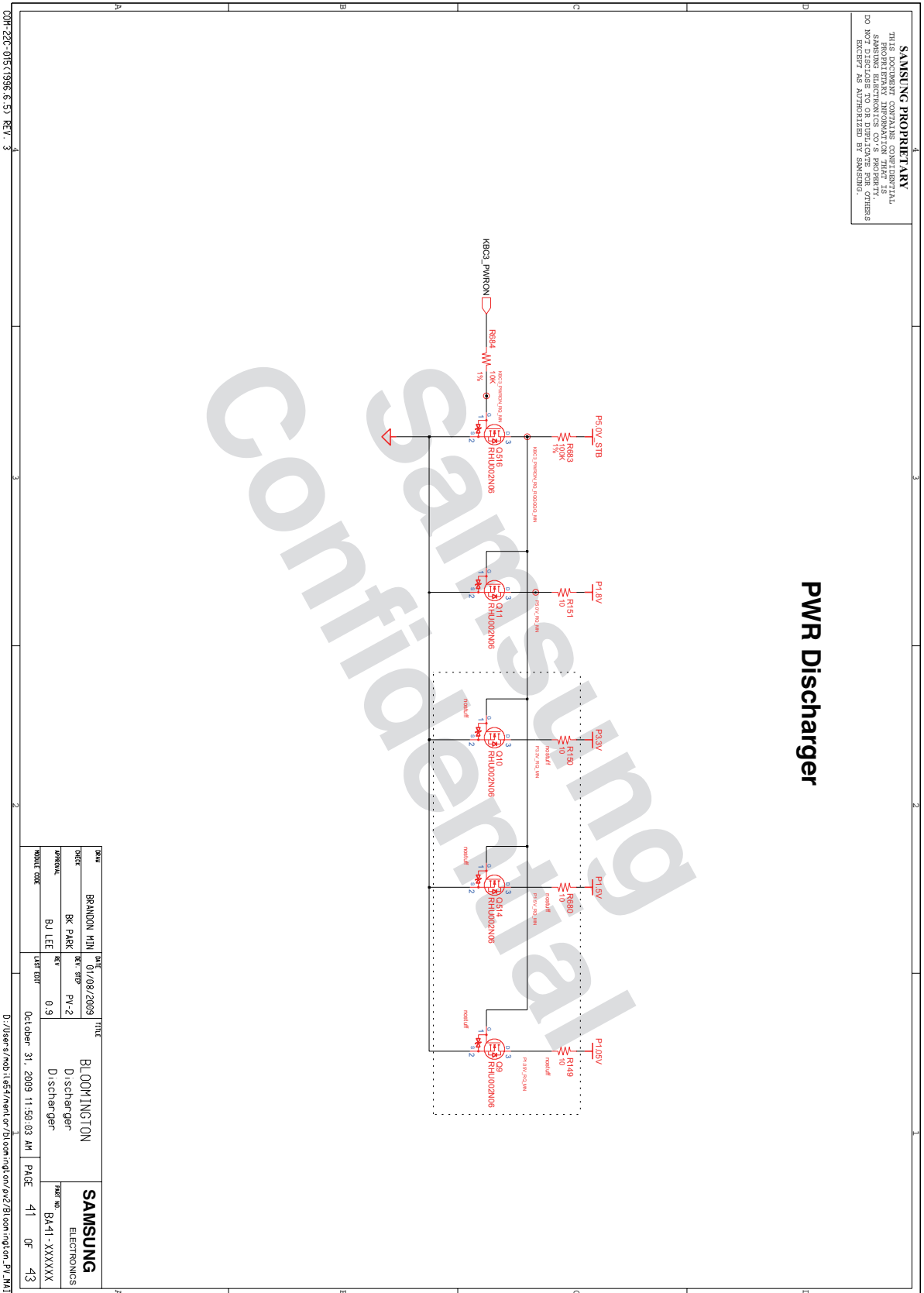


# 8. Block Diagram and Schematic





## 8. Block Diagram and Schematic



# 8. Block Diagram and Schematic

**SAMSUNG PROPRIETARY**

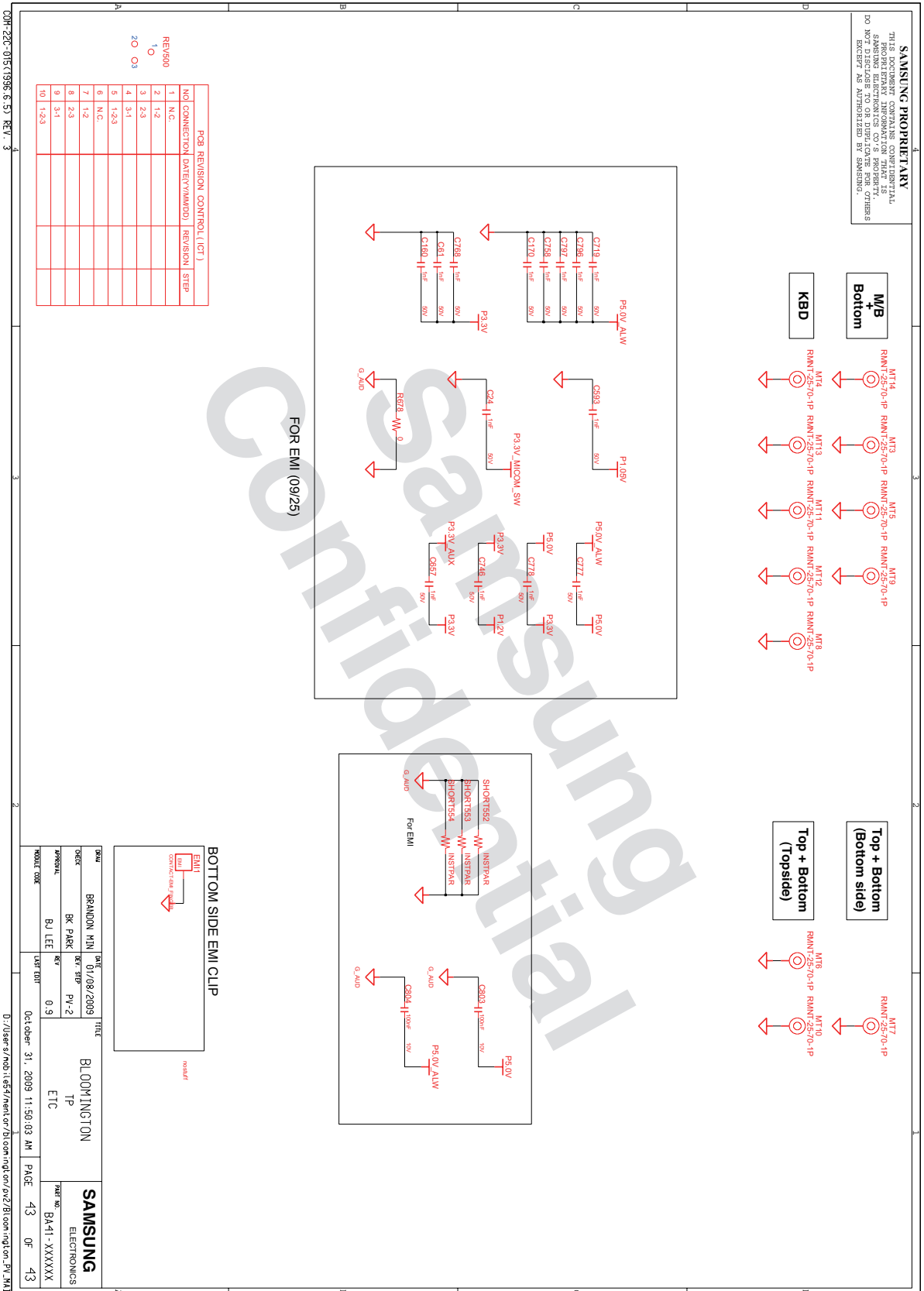
THIS DOCUMENT CONTAINS CONFIDENTIAL AND PROPRIETARY INFORMATION THAT IS NOT TO BE DISCLOSED TO OR USED BY ANY OTHERS EXCEPT AS AUTHORIZED BY SAMSUNG.

DESIGN	BRANDON MIN	DATE	3/2/2009	TITLE	BLOOMINGTON	<b>SAMSUNG</b>
DRAWN	BK PARK	REV	PV-2	IP	IP	
APPROVAL	BJ LEE	REV	0.9	TTP FREEE		PART NO. BA-41-XXXXXX
MODEL CODE		LAST EDIT		Oct 08 11:50:03 AM	PAGE	42 OF 43

D:\Users\moo11857\ndoc\Bloomington\pv\_kalin

- 이 문서는 삼성전자의 기술 자산으로 승인자만이 사용할 수 있습니다 -  
 - This Document can not be used without Samsung's authorization -

## 8. Block Diagram and Schematic



- 이 문서는 삼성전자의 기술 자산으로 승인자만이 사용할 수 있습니다 -  
- This Document can not be used without Samsung's authorization -

---

## 8. Block Diagram and Schematic

---