

SS-H414

SERVICE MANUAL

Canadian Model
AEP Model
E Model

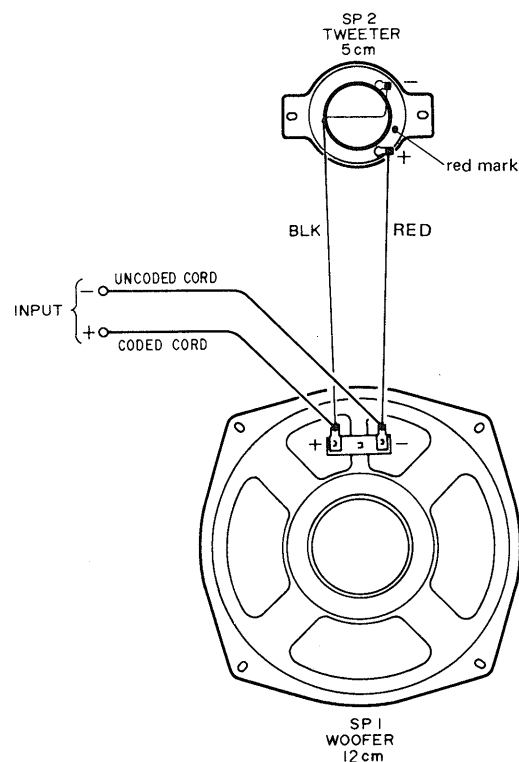


• This set is the speaker system in FH-313.

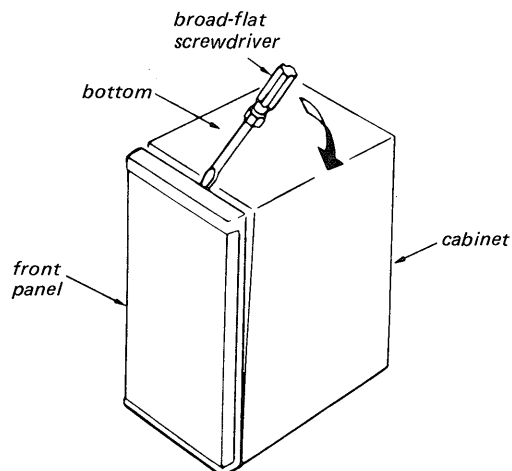
SPECIFICATIONS

Speaker system	2 way speaker system
Speaker units	Woofer : 12cm, cone type Tweeter : 5cm, cone type
Nominal impedance	6 ohms
Dimensions	Approx. 182 × 268 × 220mm (w/h/d)
Weight	Approx. 2.7kg per speaker, net

2. WIRING DIAGRAM



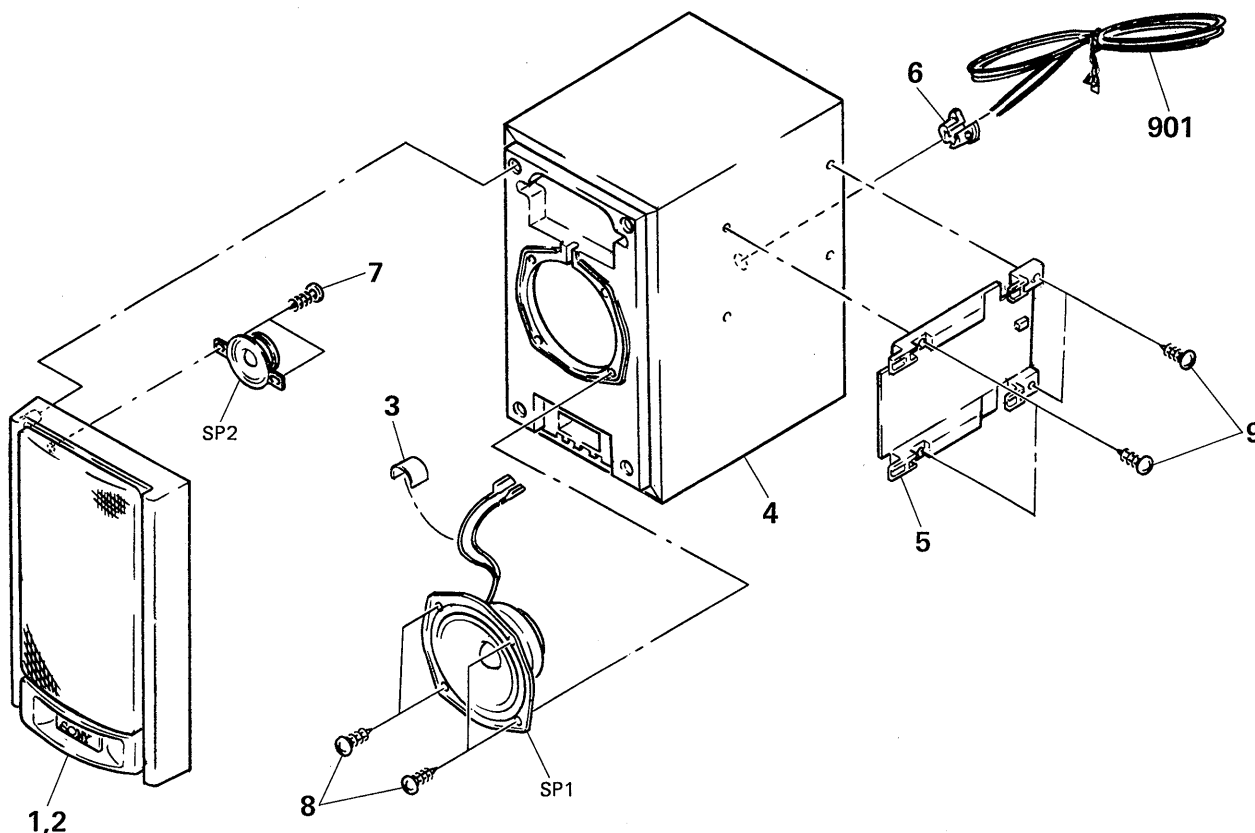
1. FRONT PANEL REMOVAL



Note: Be careful not to scratch the cabinet.

SPEAKER SYSTEM
SONY®

3. EXPLODED VIEW AND PARTS LIST



No.	Part No.	Description	Remarks	No.	Part No.	Description
1	X-4929-602-1 X-4929-618-1	(E).....PANEL (LEFT) ASSY, FRONT (Canadian,AEP)...PANEL (LEFT) ASSY, FRONT		901	1-574-439-11	CORD, SPEAKER
2	X-4929-601-1 X-4929-617-1	(E).....PANEL (RIGHT) ASSY, FRONT (Canadian,AEP)...PANEL (RIGHT) ASSY, FRONT		SP1	1-544-077-11	SPEAKER (12CM)
3	*4-920-140-01	PACKING		SP2	1-544-078-11	SPEAKER (5CM)
4	*X-4929-603-1	CABINET ASSY, SPEAKER		<u>ACCESSORY & PACKING MATERIAL</u>		
5	4-929-606-01	PANEL, SIDE		*4-857-137-01	CUSHION	
6	4-870-003-00	CLIPPER, CORD		4-920-151-01	SHEET, PROTECTION	
7	7-685-646-79	SCREW +BVTP 3X8 TYPE2 SLIT				
8	4-874-614-11	SCREW (4) (3.5X14), TAPPING				
9	4-874-614-61	SCREW (4) (3.5X16), TAPPING				