



THOMSON

AUDIO



SERVICE MANUAL DOCUMENTATION TECHNIQUE TECHNISCHE DOKUMENTATION DOCUMENTAZIONE TECNICA DOCUMENTACION TECNICA

MS 4000 MS 6000

Version (PC*): A

*PC: The version code is indicated either in the battery compartment or on the back of the unit - ce code version est indiqué dans le compartiment à piles ou au dos de l'appareil - PC: Version des Geräts wird im Batteriefach oder auf der Rückseite angegeben - il codice della versione è indicato nello scompartimento delle batterie o sul retro dell'apparecchio - el código de la versión está indicado en el compartimento de las pilas o en la parte trasera del aparato.



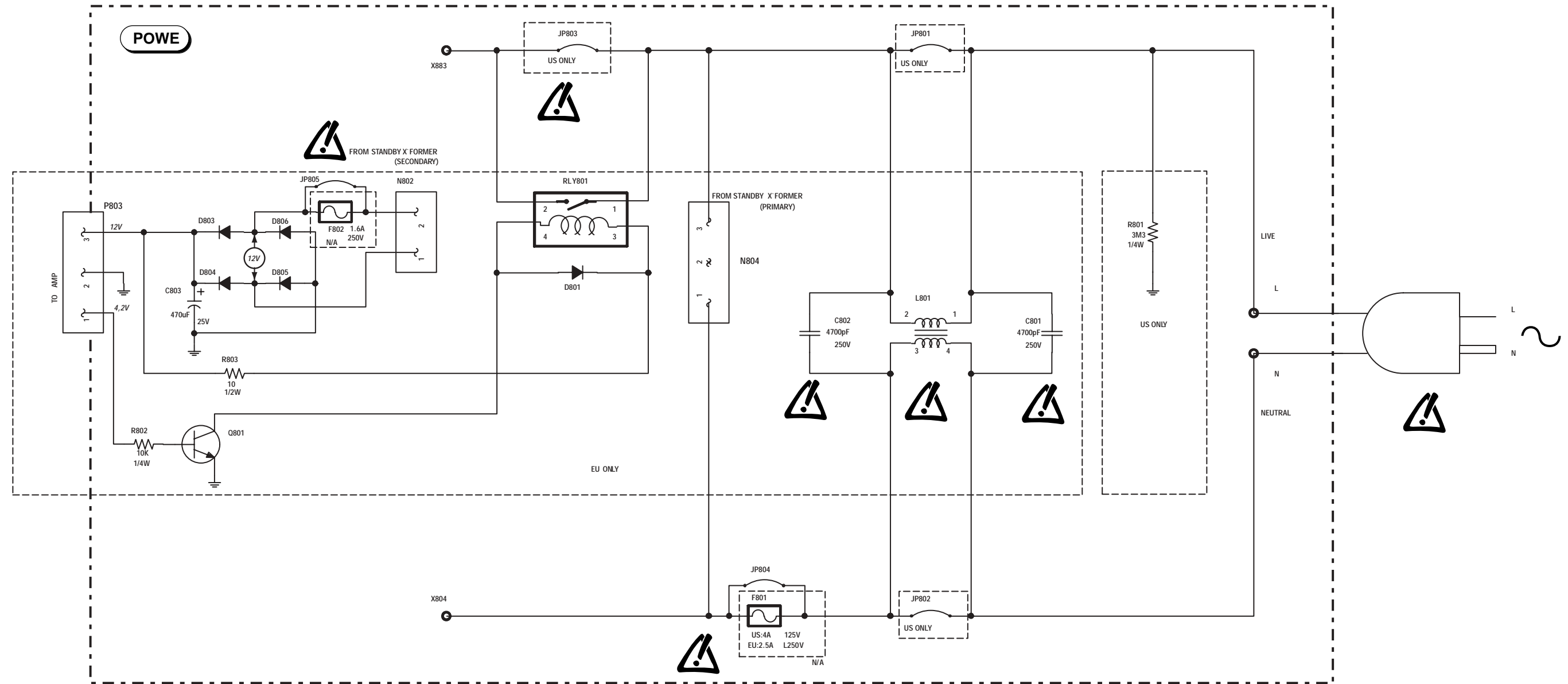
Technical data - Caractéristiques principales Technische Daten - Dati tecnici - Características del aparato

Type of set : Type d'appareil : Geräteart : Tipo d'apparecchio : Tipo de aparato :	Cassette radio recorder / compact disc Combiné radio cassette / CD CD-Radio Cassetten Portable Insieme radio cassette / CD Radio cassette / CD	
Power supply : Alimentation : Stromversorgung : Alimentazione : Alimentación :	230 V ~ 50Hz	Nominal output power : Puissance nominale de sortie : Nennausgangsleistung : potenza nominale di uscita : Potencia nominal de salida :
 FM - MF : MW - PO : LW - GO :	87,5 - 108 MHz 522 - 1611 kHz 150 - 283 kHz	Sensitivity : Sensibilité : Empfindlichkeit : Sensibilità : Sensibilidad :
 Frequency response : Courbe de réponse : Frequenzgang : Curva di risposta : Curva de respuesta :	125 Hz - 6,3 kHz (+5 / - 5 dB)	Signal to noise ratio : Rapport signal / bruit : Geräuschspannungsabstand : Rapporto segnale / disturbo : Relación señal / ruido :
 Wow and flutter : Fluctuations : Gleichlauf : Fluttuazioni : Fluctuaciones :	0,3 %	
Disc rotation speed : Vitesse de rotation du disque : CD-Drehgeschwindigkeit : Velocità di rotazione del disco : Velocidad de rotación del disco :	200 → 500 tr/m	Frequency response : Courbe de réponse : Frequenzgang : Curva di risposta : Curva de respuesta :
DAD Stereo separation : Diaphonie : Übersprechdämpfung : Diafonia : Diafonía :	40 dB	Signal to noise ratio : Rapport signal / bruit : Geräuschspannungsabstand : Rapporto segnale / disturbo : Relación señal / ruido :

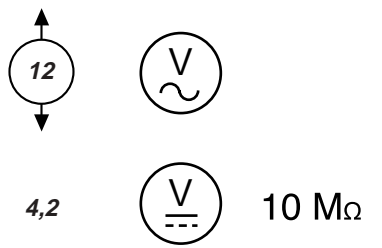
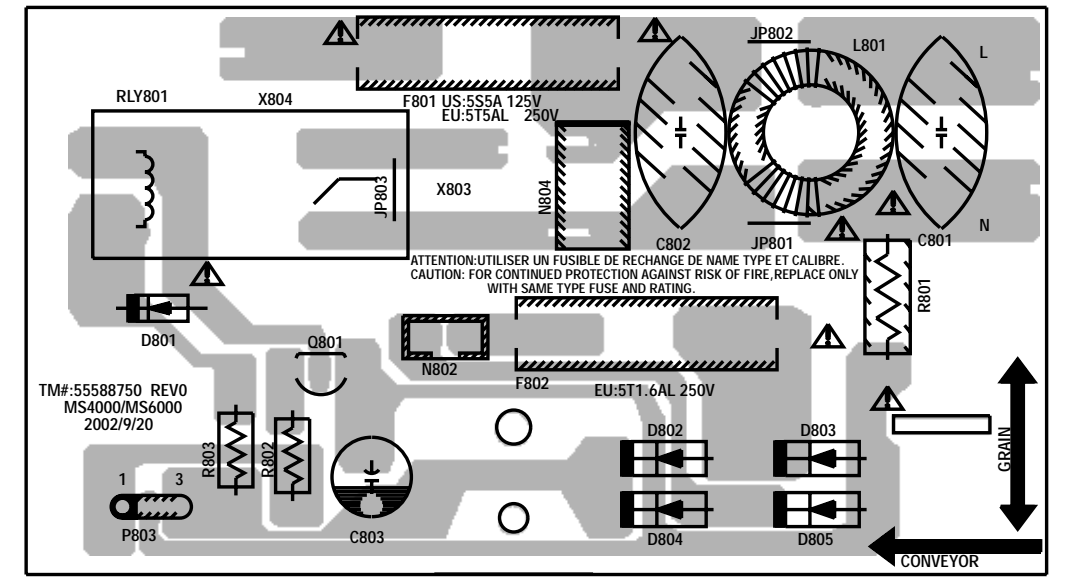


WARNING : Before servicing this chassis read the safety recommendations.
ATTENTION : Avant toute intervention sur ce châssis, lire les recommandations de sécurité.
ACHTUNG : Vor jedem Eingriff auf diesem Chassis, die Sicherheitsvorschriften lesen.
ATTENZIONE : Prima di intervenire sullo chassis, leggere le norme di sicurezza.
IMPORTANTE : Antes de cualquier intervención, leer las recomendaciones de seguridad.

Code : 357 207 20 - 0803 / 3,7M - CRKD2559 / CRKD2560 Print.

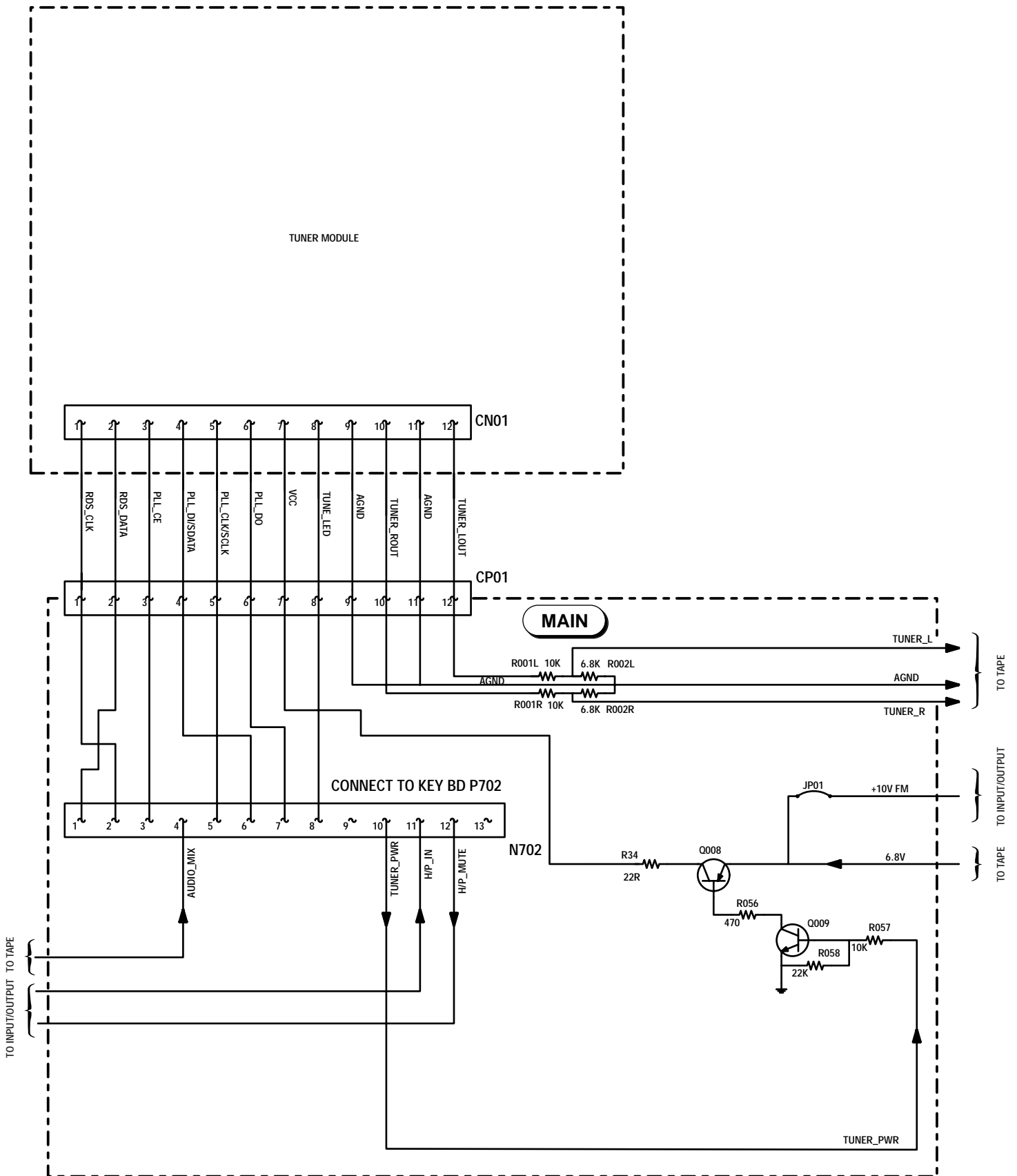


Power unit P.C.B.
Platine secteur
Ltpl. Netzanschluss
Piastra di rete
Platina de red

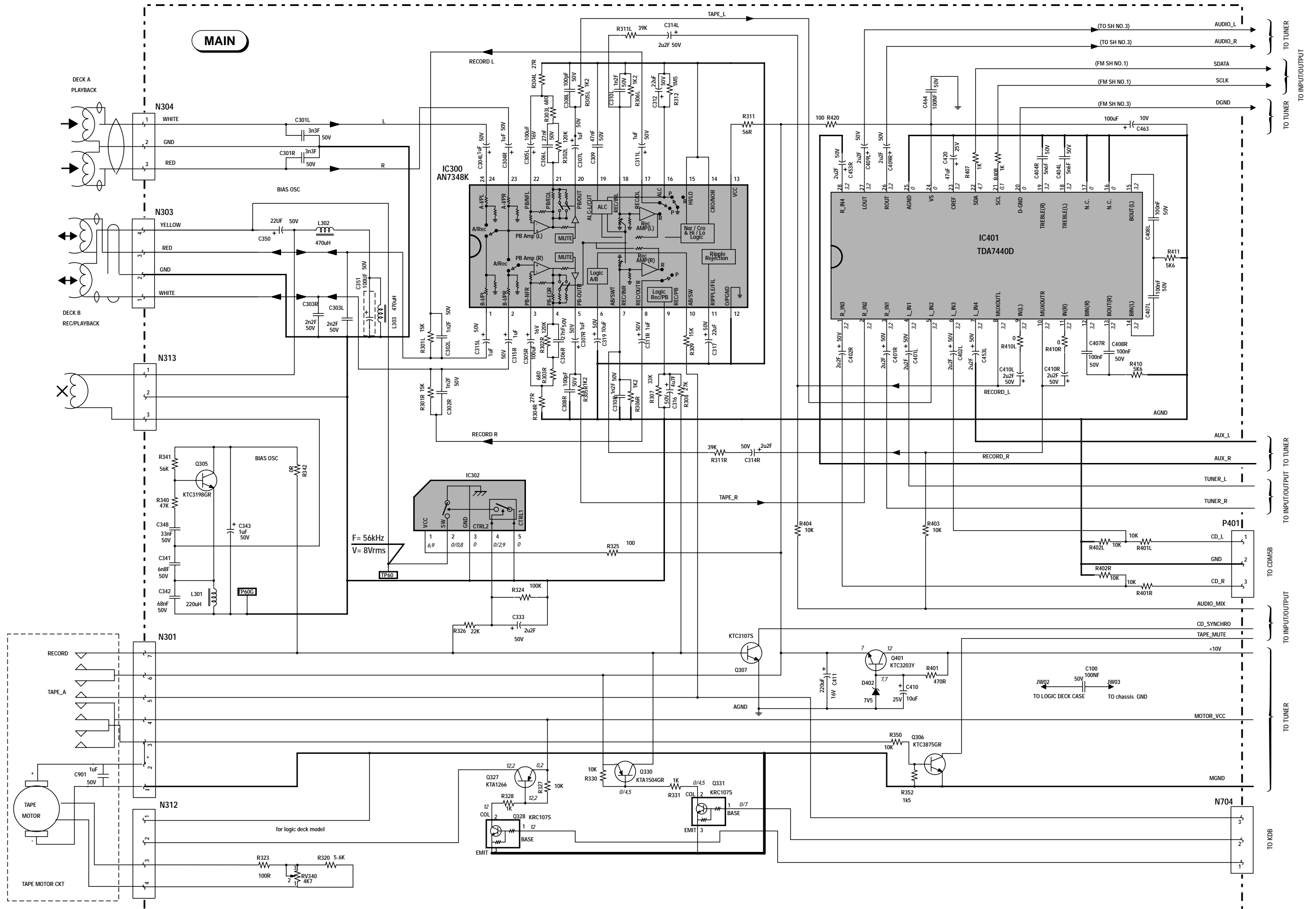


- NOTES:
- Unless otherwise specified:
 - All resistor values are in ohms, 1/10W
 - All Capacitor values are in uF
 - Voltages are positive with respect to ground under no signal conditions
 - Replace transistors with type specified from replacement parts list
 - Unless otherwise stated, all voltages taken in radio "on" position
 - * and ⚠ indicates critical safety components. Replace only with those specified from replacement parts list to maintain proper performances and safety of this unit.

**MAIN SCHEMATIC DIAGRAM - SCHEMA DE LA PLATINE PRINCIPALE - SCHALTBILD
GRUNDPLATTE - SCHEMA DELLA PIASTRA PRINCIPALE - ESQUEMA DE LA PLATINA
PRINCIPAL
(TUNER PART)**

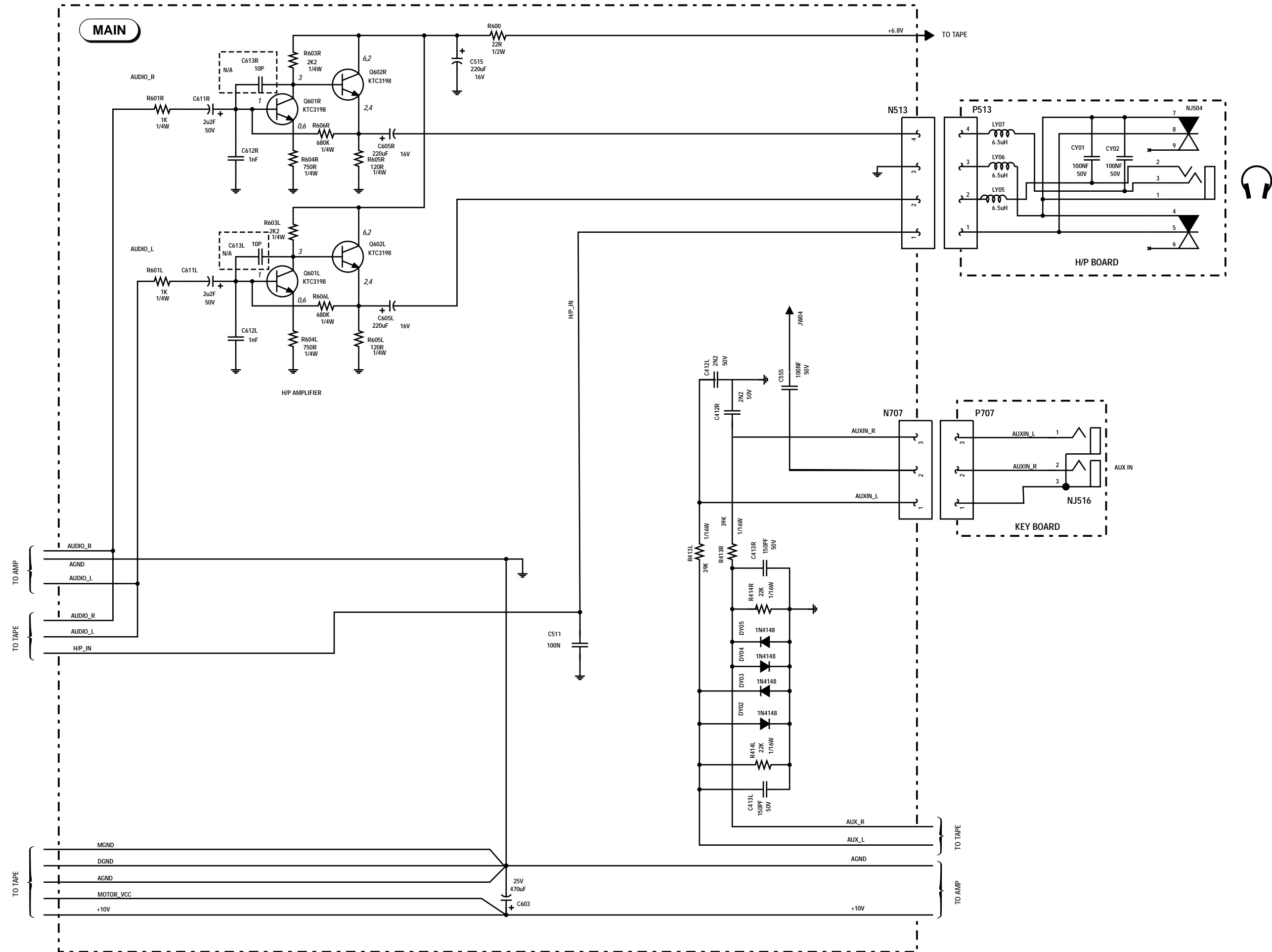


MAIN SCHEMATIC DIAGRAM - SCHEMA DE LA PLATINE PRINCIPALE - SCHALTBILD GRUNDPLATTE - SCHEMA DELLA PIASTRA PRINCIPALE - ESQUEMA DE LA PLATINA PRINCIPAL (TAPE PART)

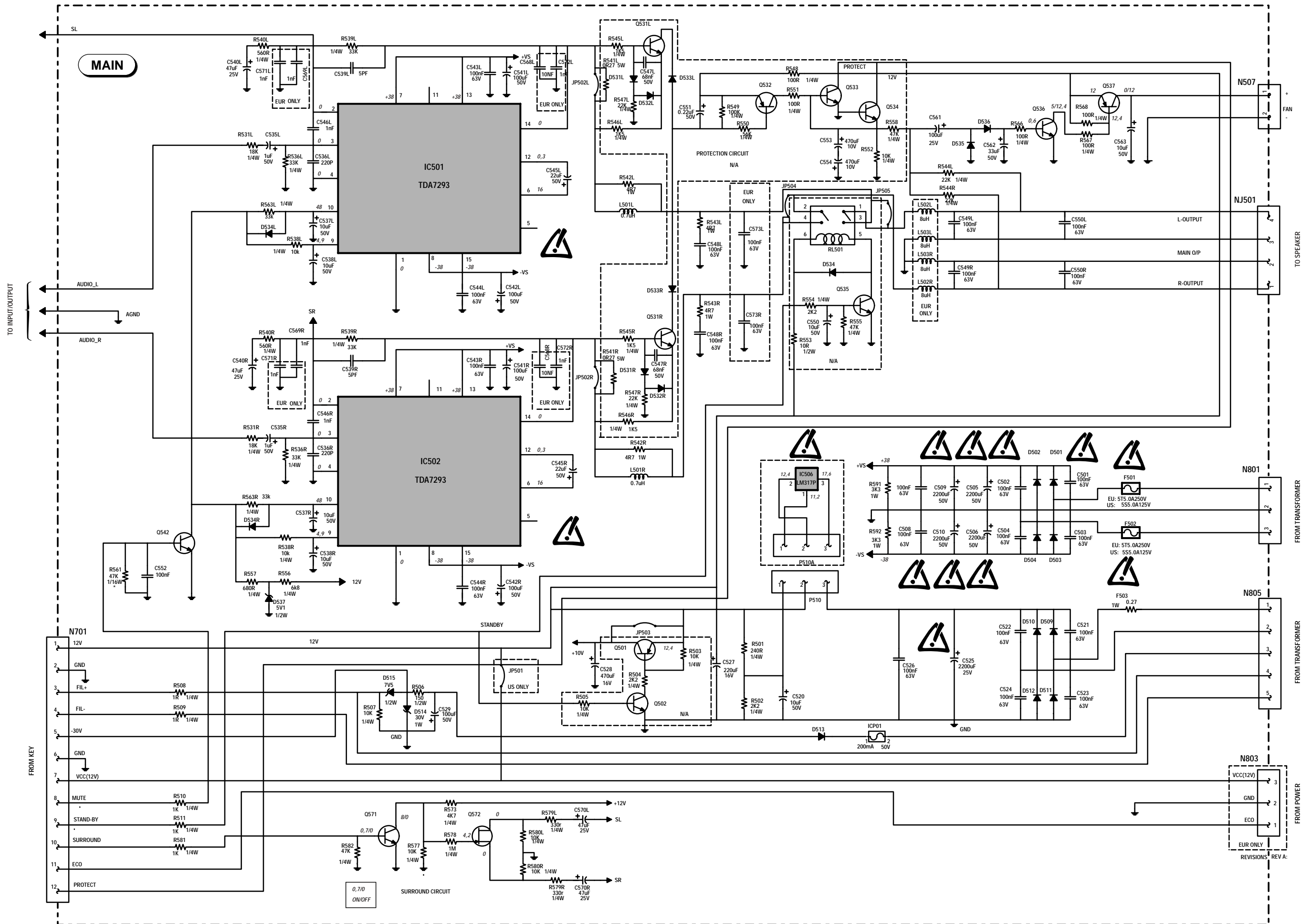


IC300	$\frac{\circ}{\downarrow}$ A	$\frac{\circ}{\downarrow}$ B	$\frac{\circ}{\downarrow}$ B
1	0	0	1,9
2	0	0,7	1,9
3	0,7	0,7	0,7
4	3,5	3,5	3,5
5	2,8	2,8	2,6
6	2,6	0,1	2,9
7	0	0	0
8	0,1	0,1	0
9	0	0	2,6
10	1,3	0	0
11	4,5	4,5	4,4
12	0	0	0
13	6,1	6	5,9
14	0	0	0
15	0	0	0
16	0	0	1,1
17	0,1	0,1	2,8
18	0,2	0	0
19	0,2	0,2	3,5
20	2,8	2,8	2,6
21	3,5	3,5	3,3
22	0,7	0,7	0,7
23	0	0	0
24	0	0	0

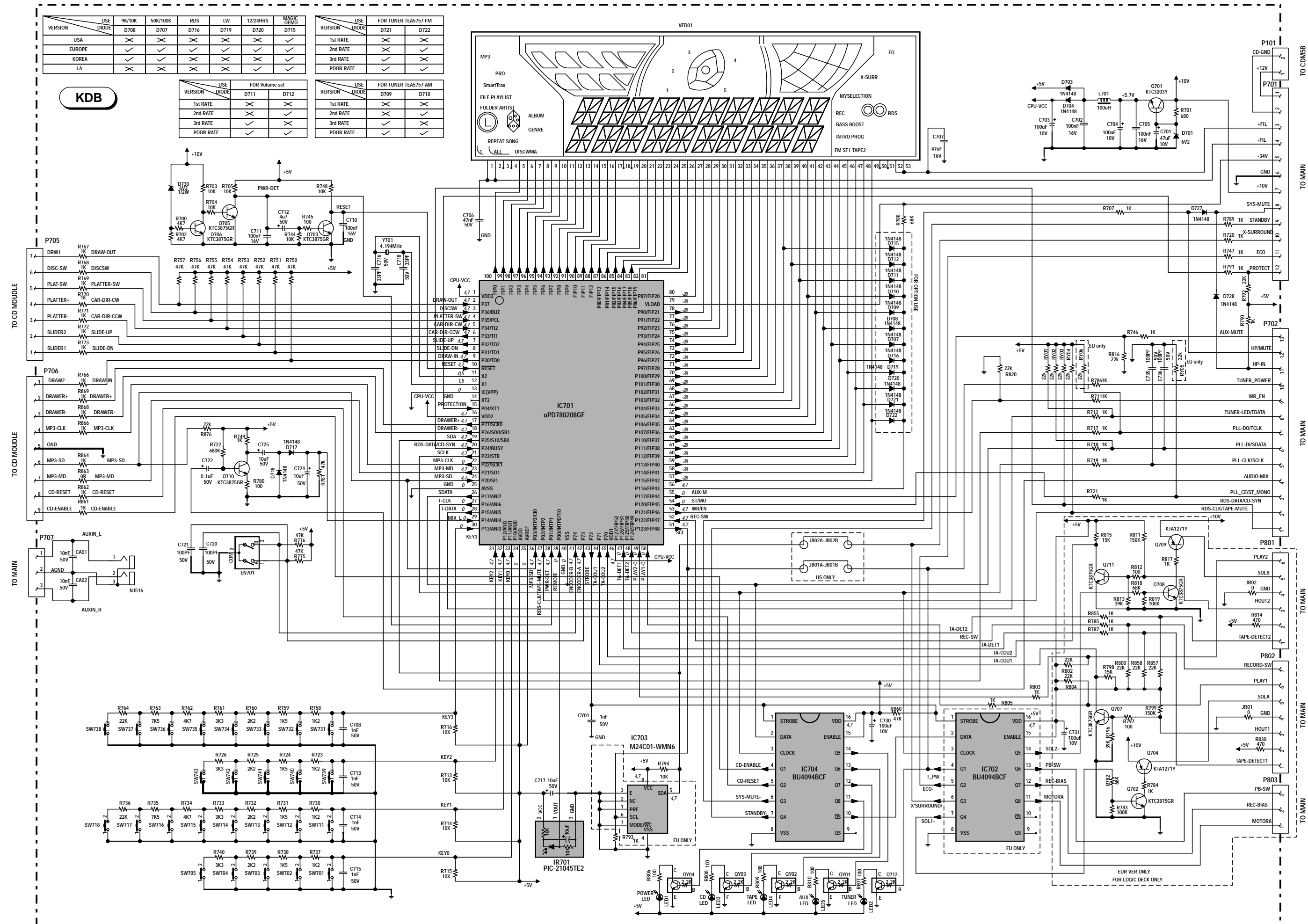
MAIN SCHEMATIC DIAGRAM - SCHEMA DE LA PLATINE PRINCIPALE - SCHALTBILD GRUNDPLATTE - SCHEMA DELLA PIASTRA PRINCIPALE - ESQUEMA DE LA PLATINA PRINCIPAL (INPUT/OUTPUT PART)



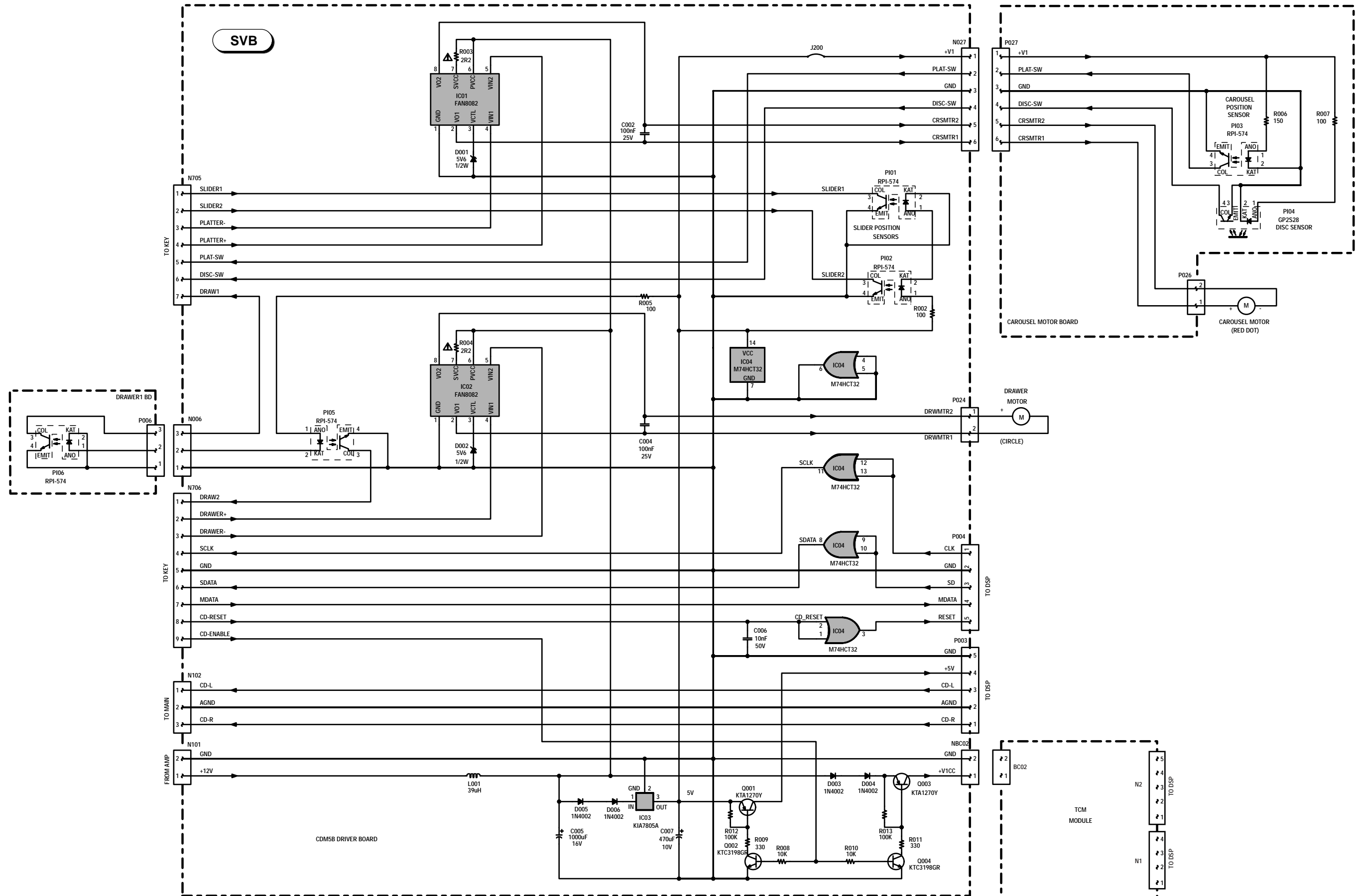
MAIN SCHEMATIC DIAGRAM - SCHEMA DE LA PLATINE PRINCIPALE - SCHALTBILD GRUNDPLATTE - SCHEMA DELLA PIASTRA PRINCIPALE - ESQUEMA DE LA PLATINA PRINCIPAL (POWER/AMPLIFIER PART)

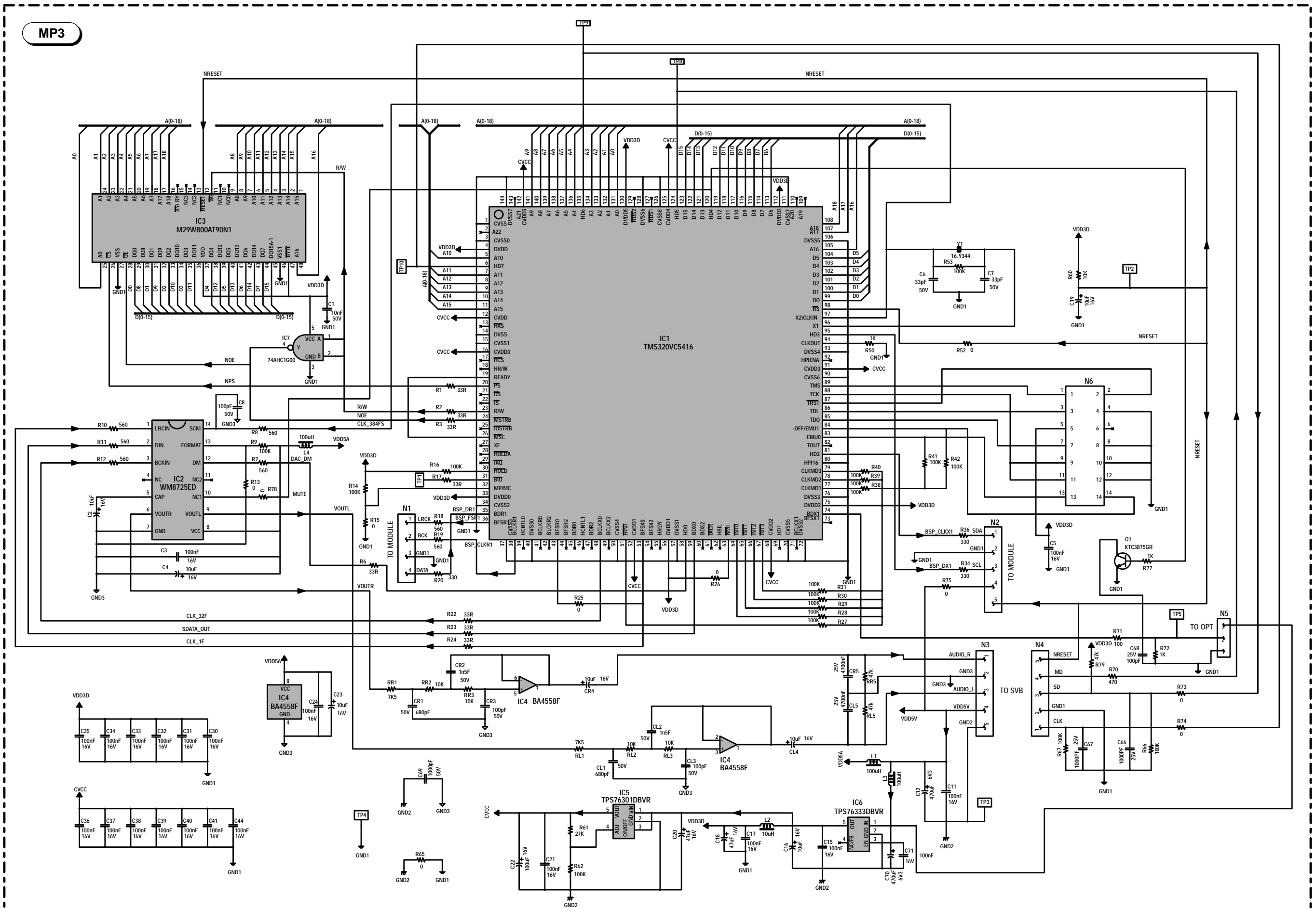


CONTROL / DISPLAY SCHEMATIC DIAGRAM - SCHEMA COMMANDES / AFFICHEUR - SCHALTBILD BEDIENTEIL / ANZEIGE - SCHEMA COMANDI / INDICATORE - ESQUEMA MANDOS / INDICADOR - (MS 6000)



CD CONTROL MOTORS SCHEMATIC DIAGRAM - SCHEMA COMMANDES MOTEURS CD - SCHALTBILD CD WECHSLER-MOTOR - SCHEMA COMANDI MOTORI CD - ESQUEMA MANDOS MOTORES CD - (MS6000)







THOMSON

AUDIO

Brandt

FERGUSON

SABA

TELEFUNKEN

THOMSON

PARTS LIST
LISTE PIECES DETACHEES
ERSATZTEILLISTE
LISTA PARTI DI RICAMBIO
LISTA DE PIEZAS DE REPUESTO



THOMSON
MS6000
Chassis CRKD2560

MODULES

MAIN	MAIN	R	55626120
KDB	DISPLAY/CONTROL	R	55737900
MP3	MP3	R	55146990
POWE	POWER	R	55626130
RFFI	TUNER	R	55274940
SVB	CDM5B DRIVER	R	55140150



IC01,02	FAN8082	△	55116380
IC03	KIA7805API		55123960
IC04	M74HCT32B1R		55144850
IC1	TMS320VC5416PGE160 FLAT		55090810
IC2	WM8725D FLAT		35122460
IC3	M29W800AT90N1 FLAT		55136720
IC4	BA4558F FLAT		20976940
IC5	TPS76316DBVR FLAT		55148930
IC6	TPS76333DBVR FLAT		55143040
IC300	AN7348K		20693340
IC302	BA7755A		10214460
IC401	TDA7440D FLAT		55097860
IC501,502	TDA7293		55512880
IC506	LM317P	△	55344820
IC701	UPD780208GF-152-3BA FLAT		55552970
IC702,704	HCF4094BM1 FLAT		55069960
IC703	24C01A FLAT		21090560
IR701	GP1U281R		55144890



ICP01	PSR-5	△	55173540
PI01,02,03,05,06	RPI-574		20586840
PI04	GP2S28		20556130
Q003,537	KTA1273Y/KTA966Y		10448970
Q004,536,542,571,601L,601R,602L,602R	KTC3198GR		20508070
Q008,330	KTA1504GR SMD		20779750

Q009,1,2,3,412L,412R,702,703,705,706,707,708,710,711	KTC3875GR SMD		20779850
Q305,401,701,801	KTC3203Y/KTC2120Y		20538220
Q327	2SA1266Y		20508210
Q328,331	KRC107S SMD		55051240
Q572	5HN02N		55693400
Q704,709	KTA1271Y		20685080
Q712,QY01,QY02,QY03,QY04	KRC110S SMD		35095540



D001,002	1N5232B 5.6V		20414280
D003,004,005,006,509,510,511,512,513,802,803,804,805,DY01	1N4002		11070780
D1	1SS355 SMD		20726770
D402,515	BZX55C7V5		80444150
D501,502,503,504	1N5402		55041640
D514	1N4751A		20743260
D534L,534R,535,536,703,704,707,708,712,716,717,718,719,720,727,728,801	1N4148		44009209
D537	1N5231B 5.1V		35033870
D701,730	BZX55C6V2 500MW		20475410
LED1	L314-SRD LED		20971500
LED2,3,4,5	3Y4SCCY01 LED		55685730



Y1	11M2896HZ		55150080
Y701	4M19HZ		20776150



L801 △ 70182000



EN701 △ 55407950
RV340 4K7 OHM △ 10368440



F503 0R27 OHM 10% 1.0W △ 55154180
R003,004 2R2 OHM 5% 0.25W △ 15009870



C801,802 4N7F 20% 250V △ 20677520



POWER 55589350
STAND-BY 55272830

R : RECYCLED PART
: PIECE RECYCLEE
: AUSTAUSCHTEILE
: RICAMBIO RICICLATO
: MODULO REPROCESADO

For any requests, please contact THOMSON multimedia after sales service area
Pour toutes précisions, contactez votre service apres vente local THOMSON multimedia
Für weitere Auskünfte, wenden Sie sich bitte an die THOMSON multimedia Kundendienst
Per precisazioni, contattare l'assistenza tecnica THOMSON multimedia
Para cualquier pregunta, por favor contactar con el responsable de zona del servicio postventa de THOMSON multimedia

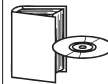
VERSION 1 05 / 2003 35722730
VERSION 2 00 / 0000

1/6

OTHER PARTS AUTRES PIECES SONSTIGE TEILE ALTRE PARTI OTRAS PIEZAS		
	RDH6015S FAN RDH6015S VENTILATEUR RDH6015S VENTILATOR RDH6015S VENTOLA RDH6015S VENTILADOR	55638450
F501,502,801	5AT TIME-LAG FUSE 5AT FUSIBLE TEMPORISE 5AT SICHERUNG 5AT FUSIBILE TEMPORIZZATO 5AT FUSIBLE TEMPORIZADO	△ 35043570
F802	1A6T 250V TIME-LAG FUSE 1A6T 250V FUSIBLE TEMPORISE 1A6T 250V SICHERUNG 1A6T 250V FUSIBILE TEMPORIZZATO 1A6T 250V FUSIBLE TEMPORIZADO	△ 48064700
NJ501	LOUDSPEAKER SOCKET PRISE HAUT PARLEUR LAUTSPRECHERBUCHSE PRESA ALTOPARLANTE TOMA HEMBRA ALTAVOZ	10284650
NJ513	JACK SOCKET PRISE JACK BUCHSE PRESA JACK TOMA JACK	20369030
NJ516	CINCH SOCKET X2 PRISE CINCH X2 CHINCH-BUCHSE X2 PRESA CINCH X2 TOMA CINCH X2	55548810
NJ518	CINCH SOCKET PRISE CINCH CHINCH-BUCHSE PRESA CINCH TOMA CINCH	55051030
OP01	OPTICAL SOCKET PRISE OPTIQUE BUCHSE PICK-UP PRESA OTTICA TOMA OPTICO	55035050
RLY801	SDT-S-112LMR RELAY 12V SDT-S-112LMR RELAIS 12V SDT-S-112LMR RELAYS 12V SDT-S-112LMR RELEE 12V SDT-S-112LMR RELEE 12V	△ 35095470
SW701,702, 703,704,705, 711,712,713, 714,715,716, 717,718,731, 732,733,734, 735,736,737, 738,739,740, 741,742,743	MICROSWITCH MICROCONTACTEUR MIKROSCHALTER MICROINTERRUTTORE MICROCONTACTOR	20404730
VFD01	DISPLAY VFD AFFICHEUR VFD VFD-ANZEIGE VISUALIZZATORE VFD VISUALIZADOR VFD	55657660

EQUIPMENT/PRESENTATION EQUIPEMENT/PRESENTATION AUSSTATTUNG/GEHAEUSE PARTI VARIE EQUIPO/PRESENTACION		
	MS6000 (REMOTE CONTROL) MS6000 (TELECOMMANDE) MS6000 (FERNBEDIENUNG) MS6000 (TELECOMANDO) MS6000 (TELEMANDO)	55678490
	LOUDSPEAKER BOX ASSY RIGHT AND LEFT ENCEINTE ACOUSTIQUE GAUCHE ET DROITE LAUTSPRECHERBOX RECHTS UND LINKS CASSA ACUSTICA DESTRO E SINISTRO CAJA ACUSTICA DERECHA Y IZQUIERDA	55678380
	LOUDSPEAKER BOX RIGHT ENCEINTE ACOUSTIQUE DROITE LAUTSPRECHERBOX RECHTS CASSA ACUSTICA DESTRA CAJA ACUSTICA DERECHA	35722700
	LOUDSPEAKER BOX LEFT ENCEINTE ACOUSTIQUE GAUCHE LAUTSPRECHERBOX LINKS CASSA ACUSTICA SINISTRA CAJA ACUSTICA IZQUIERDA	35722690
	FOLDING BOX EMBALLAGE CARTON KARTON IMBALLGGIO CARTONE EMBALAJE CARTON	5567869A
	FITTING FRONT CALE AVANT POLSTER VORN Distanziatore anteriore CALZO DELANTERA	55657780
	FITTING REAR CALE ARRIERE POLSTER HINTEN Distanziatore posteriore CALZO TRASERA	55570930
	MULTIMEDIA CD ROM MUSICMATCH 7.1 MULTIMEDIA CD ROM MUSICMATCH 7.1 MULTIMEDIA CD ROM MUSICMATCH 7.1 MULTIMEDIA CD ROM MUSICMATCH 7.1 MULTIMEDIA CD ROM MUSICMATCH 7.1	55437860
	AM ANTENNA ASSY ANTENNE AM CPL AM ANTENNE KPL ANTENNA AM CPL ANTENA AM CPL	55149810
	POWER SUPPLY LEAD CORDON D'ALIMENTATION NETZKABEL CAVO DI ALIMENTAZIONE CABLE DE ALIMENTACION	△ 62046600

MECHANISM MECANIQUE MECHANIK MECCANICA MECANISMO		
	TCM150-2 + 5CD MECHANISM ASSY TCM150-2 + MECANISME 5CD EQUIPE TCM150-2 + 5CD-WECHSLER K.P.L TCM150-2 + MECCANISMO 5CD COMPLETO TCM150-2 + MECANISMO 5CD EQUIPADO	55356390
	TCM150-2 OPTICAL PLAYER TCM150-2 LECTEUR OPTIQUE TCM150-2 CD-LAUFWERK TCM150-2 ASSIEME OTTICA TCM150-2 MECANISMO OPTICO	10737970
	CASSETTE MECHANISM MECANIQUE CASSETTE CASSETTENLAUFWERK MECCANICA CASSETTA MECANISMO CASSETTE	55756320
	RUBBER BELT (MOTOR) D:36,5MM COURROIE CAOUTCHOUC (MOTEUR) D:36,5MM ANTRIEBSRIEMEN (MOTOR) D:36,5MM CINGHIA DI GOMMA (MOTORE) D:36,5MM CORREA DE GOMA (MOTOR) D:36,5MM	55073350
	RUBBER BELT (TABLE) D:23MM COURROIE CAOUTCHOUC (POS.Plateau) D:23MM ANTRIEBSRIEMEN (TELLER) D:23MM CINGHIA DI GOMMA (PIATTO) D:23MM CORREA DE GOMA (PLATO) D:23MM	20710160
	BUSH RUBBER CD FRONT AMORTISSEUR CAOUTCHOUC CD AVANT DAEMPFER GUMMI CD VORN AMMORTIZZATORE DI GOMMA CD ANTERIORE AMORTIGUADOR DE GOMA CD DELANTERA	20446740
	BUSH RUBBER CD REAR AMORTISSEUR CAOUTCHOUC CD ARRIERE DAEMPFER GUMMI CD HINTEN AMMORTIZZATORE DI GOMMA CD POSTERIORE AMORTIGUADOR DE GOMA CD TRASERA	20365070
	MS6000 UM TH MS6000 NU TH MS6000 BA TH MS6000 IU TH MS6000 IU TH MS6000 PARTS LIST MS6000 LISTE DE PIECES DETACHEES MS6000 ERSATZTEILLISTE MS6000 LISTA PARTI DI RICAMBIO MS6000 LISTA DE PIEZAS DE REPUESTO	55678710
	CRKD2559/2560 TH SERVICE MANUAL CRKD2559/2560 TH DOCUMENTATION TECHNIQUE CRKD2559/2560 TH TECHNIS. DOKUMENTATION CRKD2559/2560 TH DOCUMENTAZIONE TECNICA CRKD2559/2560 TH DOCUMENTACION TECNICA	35720720



**CHASSIS AND PRESENTATION
CHASSIS ET PRESENTATION
CHASSIS UND GEHAEUSETEILE
TELAIO E DI PRESENTAZIONE
CHASIS Y PRESENTACION**

040	FRONT PANEL FACADE FRONTPLATTE PANNELLO FRONTALE PANEL FRONTAL	55678430
060	SIDE PANEL LEFT PANNEAU LATERAL GAUCHE SEITENTEIL LINKS PANNELLO LATERALE SINISTRO PANEL LATERAL IZQUIERDO	55668490
070	SIDE PANEL RIGHT PANNEAU LATERAL DROIT SEITENTEIL RECHTS PANNELLO LATERALE DESTRO PANEL LATERAL DERECHO	55668510
080	REAR PANEL PANNEAU ARRIERE SEITENTEIL HINTEN PANNELLO POSTERIORE PANEL POSTERIOR	55678420
090	UPPER CASE COFFRET SUPERIEUR GEHAEUSE OBEN CASSA SUPERIORE CAJA SUPERIOR	55668520
120	TRAY CD VOLET CD CD KLAPPE SPORTELLLO CD TAPA CD	55673410
130	CASSETTE FLAP WINDOW LEFT GLACE VOLET CASSETTE GAUCHE FENSTER CASSETTENKLAPPE LINKS VETRO SPORTELLLO CASSETTA SINISTRO CRISTAL TAPA CASSETTE IZQUIERDO	55761720
140	CASSETTE FLAP WINDOW RIGHT GLACE VOLET CASSETTE DROIT FENSTER CASSETTENKLAPPE RECHTS VETRO SPORTELLLO CASSETTA DESTRO CRISTAL TAPA CASSETTE DERECHA	55761620
210	VOLUME KNOB BOUTON VOLUME LAUTSTAERKEKNOPF ROTELLA DI PLASTICA VOLUME RUEDA PLASTICA MANDO VOLUMEN	55600580
230	ON/OFF BUTTON TOUCHE MARCHE/ARRET EIN-AUS TASTE TASTO ACCESO/SPENTO TECLA MARCHA/PARADA	55536800
240	BUTTON STRIP X-SURR/OPEN/ BOOST/DISC SKIP BARRETTE X-SURR/OPEN/BOOST/DISC SKIP TASTENLEISTE X-SURR/OPEN/ BOOST/DISC SKIP PIATTINA X-SURR/OPEN/BOOST/DISC SKIP PLACA X-SURR/OPEN/BOOST/DISC SKIP	55591350
250	BUTTON STRIP SOURCE/TIMER/ DEMO/RDS BARRETTE TOUCHES SOURCE/TIMER/ DEMO/RDS TASTENLEISTE SOURCE/TIMER/ DEMO/RDS PIATTINA TASTI SOURCE/TIMER/ DEMO/RDS PLACA DE TECLAS SOURCE/TIMER/ DEMO/RDS	55591390

260	BUTTON 4 DIRECTIONS TOUCHE 4 DIRECTIONS TASTE 4 RICHTUNGS TASTO 4 DIREZIONES TECLA 4 DIRECCIONS	55591440
270	BUTTON STRIP 6 KEYS BARRETTE DE 6 TOUCHES TASTENLEISTE 6 TASTE PIATTINA 6 TASTI PLACA DE 6 TECLAS	55591450
280	BUTTON STRIP 8 KEYS BARRETTE DE 8 TOUCHES TASTENLEISTE 8 TASTE PIATTINA 8 TASTI PLACA DE 8 TECLAS	55591370
300	BUTTON VOLUME RING BAGUE TOUCHE VOLUME TASTE VOLUME RING ANELLO TASTO VOLUME ANILLO TECLA VOLUME	55600820
330	CASSETTE FLAP DOOR RIGHT VOLET CASSETTE DROIT CASSETTENKLAPPE RECHTS SPORTELLLO CASSETTA DESTRO TAPA CASSETTE DERECHO	55678960
340	CASSETTE FLAP DOOR LEFT VOLET CASSETTE GAUCHE CASSETTENKLAPPE LINKS SPORTELLLO CASSETTA SINISTRO TAPA CASSETTE IZQUIERDO	55678940
390	CASSETTE FLAP DOOR TRIM LEFT ENJOLIVEUR VOLET CASSETTE GAUCHE ZIERRHMEN CASSETTENKLAPPE LINKS FINIZIONE SPORTELLLO CASSETTA SINISTRO EMBELLECEDOR TAPA CASSETTE IZQUIERDO	55737460
400	CASSETTE FLAP DOOR TRIM RIGHT ENJOLIVEUR VOLET CASSETTE DROIT ZIERRHMEN CASSETTENKLAPPE RECHTS FINIZIONE SPORTELLLO CASSETTA DESTRO EMBELLECEDOR TAPA CASSETTE DERECHO	55737470
410	UPPER FLAP WINDOW GLACE VOLET SUPERIEUR FENSTER OBEN KLAPPE VETRO DEL SPORTELLLO SUPERIORE CRISTAL DEL TAPA SUPERIOR	55699310
420	DISPLAY WINDOW GLACE AFFICHEUR ANZEIGEFENSTER VETRO DEL VISUALIZZATORE CRISTAL DEL VISUALIZADOR	55678450
430	TRAY CD WINDOW GLACE VOLET CD FENSTER CD KLAPPE VETRO DEL SPORTELLLO CD CRISTAL DEL TAPA CD	55585810
440	CONTROL PANEL TABLEAU DE COMMANDES BEDIENTEIL QUADRO DI COMANDO TABLERO DE MANDO	55791270
460	CASSETTE HOLDER LEFT PORTE CASSETTE GAUCHE CASSETTENHALTER LINKS PORTACASSETTA SINISTRO PORTACASSETTE IZQUIERDO	55539610
470	CASSETTE HOLDER RIGHT PORTE CASSETTE DROIT CASSETTENHALTER RECHTS PORTACASSETTA DESTRO PORTACASSETTE DERECHO	55539710
510	SPRING TORSION CASSETTE LEFT RESSORT VOLET CASSETTE GAUCHE NADELFEDER CASSETTENKLAPPE LINKS MOLLA PORTACASSETTA SINISTRO RESORTE PORTACASSETTE IZQUIERDO	5558825A

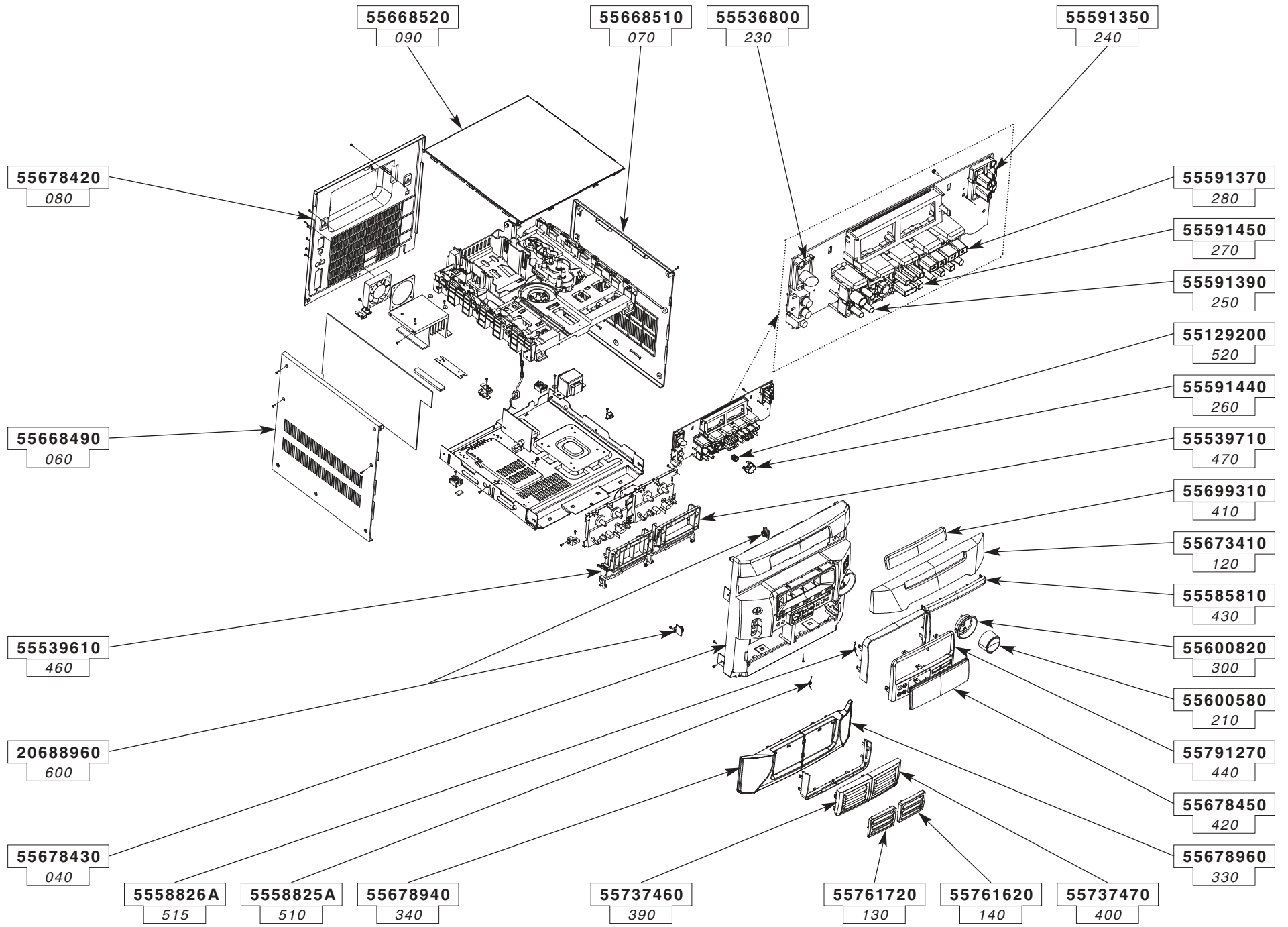
515	SPRING TORSION CASSETTE RIGHT RESSORT VOLET CASSETTE DROIT NADELFEDER CASSETTENKLAPPE RECHTS MOLLA PORTACASSETTA DESTRO RESORTE PORTACASSETTE DERECHO	5558826A
520	SPRING FOR BUTTON 4 DIRECTIONS RESSORT POUR TOUCHE 4 DIRECTIONS NADELFEDER FÜR TASTE 4 RICHTUNGS MOLLA PER TASTO 4 DIREZIONES MUELLE PARA TECLA 4 DIRECCIONS	55129200
600	CASSETTE DOOR DAMPER GEAR ROUE DENTEE PORTE CASSETTE ZAHNRAD CASSETTENHALTER RUOTA DENTATA PORTACASSETTA RUEDA DENTADA PORTACASSETTE	20688960

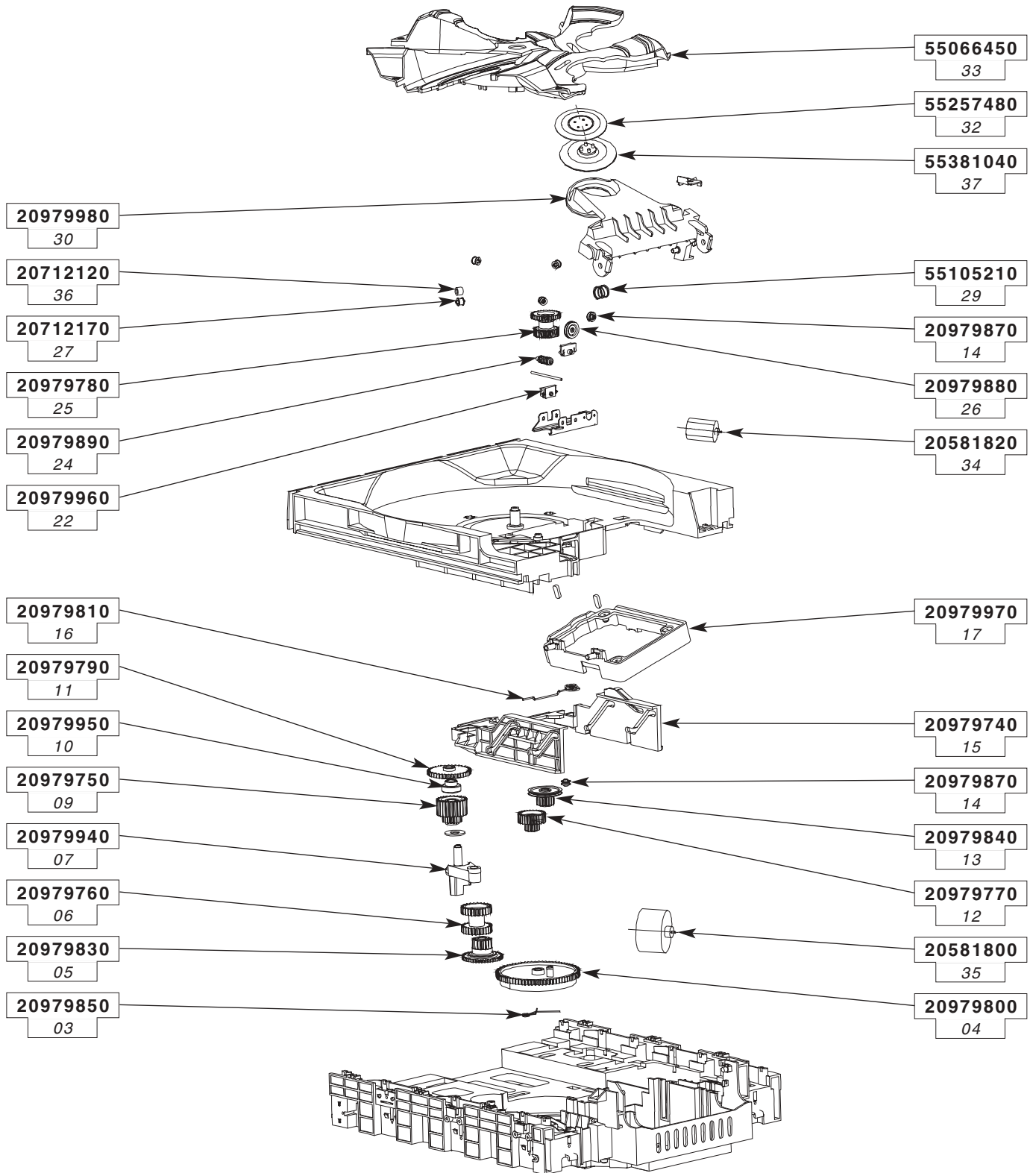
**CD MECHANISM
MECANIQUE CD
CD MECHANIK
MECCANISMO CD
MECANICA CD**

03	SPRING RESSORT FEDER MOLLA RESORTE	20979850
04	GEAR MAIN ROUE DENTEE PRINCIPALE HAUPT-ZAHNRAD RUOTA DENTATA PRINCIPAL RUEDA DENTADA PRINCIPALE	20979800
05	GEAR PIVOT ENGRENAGE PIVOT ZAHNRAD DREHPUNKT PIGNONE PERNO PINON PIVOTE	20979830
06	DUAL GEAR WHEEL DOUBLE ROUE DENTEE DOPPELT ZAHNRAD DOPPIO RUOTA DENTATA DOBLE RUEDA DENTADA	20979760
07	SWING ARM BRAS PIVOT ARM,DREHPUNKT BRACCIO PERNO BRAZO PIVOTE	20979940
09	GEAR CLUTCH ROUE D'EMBRAYAGE RAD KUPPLUNG RUOTA DI FRIZIONE RUEDA DE EMBRAGUE	20979750
10	SLIDING ROLLER PATIN GLISSANT RUTSCHIG ROLL PATTINO SCIVOLOSO PATIN RESBALADIZO	20979950
11	GEAR WHEEL ROUE DENTEE ZAHNRAD RUOTA DENTATA RUEDA DENTADA	20979790
12	DUAL GEAR DOUBLE ENGRENAGE DOPPELT ZAHNRAD DOPPIO PIGNONE DOBLE PINON	20979770
13	INTERMEDIATE GEAR WHEEL POULIE INTERMEDIAIRE DENTEE ZWISCHENZAHNRAD PULEGGIA INTERMEDIA DENTATA POLEA INTERMEDIA DENTADA	20979840
14	MOTOR PULLEY TRAY/TABLE CD POULIE MOTEUR TIROIR/PLATEAU CD MOTORROLLE SCHUBLADE/TELLER CD PULEGGIA DEL MOTORE CASSETTO/ PIATTO CD POLEA DE MOTOR CORREDERA/PLATO CD	20979870
15	GUIDE RAIL GUIDE RAIL FUEHRUNGSSCHIENE EINFAEDELN CONTROROTAIA CONTRACARRIL	20979740
16	MAIN GEAR TORSION SPRING RESSORT A EPINGLE ROUE PRINCIPALE HAUPT-ZAHNRAD NADELFEDER MOLLA DI TORSIONE RUOTA PRINCIPAL RESSORTE HORQUILLA RUEDA PRINCIPALE	20979810

17	OPTICAL PLAYER BRACKET SUPPORT LECTEUR OPTIQUE CD-LAUFWERK HALTER SUPPORTO ASSIEME OTTICA SOPORTE MECANISMO OPTICO	20979970
22	THREADED END-FITTING EMBOUT PLASTIQUE MUFFENTUELLE GHIERA DI PLASTICA CONTERA PLASTICA	20979960
24	INTERMEDIATE SPINDLE AXE INTERMEDIAIRE ZWISCHENACHSE SPINOTTO INTERMEDIO EJE INTERMEDIO	20979890
25	DUAL GEAR WHEEL DOUBLE ROUE DENTEE DOPPELT ZAHNRAD DOPPIO RUOTA DENTATA DOBLE RUEDA DENTADA	20979780
26	PULLEY POULIE ROLLE PULEGGIA POLEA	20979880
27	RUBBER ROLLER BRACKET SUPPORT GALET CAOUTCHOU GUMMIROLLE HALTER SUPPORTO RULLO DI GOMMA SOPORTE RODILLO DE GOMA	20712170
29	SPRING RESSORT SPRUNGFEDER MOLLA MUELLE	55105210
30	ARM, PLASTIC BRAS PLASTIQUE ARM, KUNSTSTOFF BRACCIO IN PLASTICA BRAZO PLASTICO	20979980
32	CD LOCK MAGNET VERROU AIMANT CD RIEGEL MAGNET CD CHIUSURA MAGNETE CD CERROJO IMAN CD	55257480
33	TABLE 5 CD PLATEAU 5 CD TELLER 5 CD PIATTO 5 CD PLATO 5 CD	55066450
34	FF-130SH-14230 MOTOR DC FF-130SH-14230 MOTEUR DC FF-130SH-14230 MOTOR DC FF-130SH-14230 MOTORE DC FF-130SH-14230 MOTOR DC	20581820
35	RF-500TB MOTOR DC RF-500TB MOTEUR DC RF-500TB MOTOR DC RF-500TB MOTORE DC RF-500TB MOTOR DC	20581800
36	RUBBER ROLLER GALET CAOUTCHOU GUMMIROLLE RULLO DI GOMMA RODILLO DE GOMA	20712120
37	HOLDER MAGNET SUPPORT AIMANT HALTER MAGNET SUPPORTO MAGNETE SOPORTE IMAN	55381040

CASSETTE MECHANISM / MECANIQUE CASSETTE / CASSETTENLAUFWERK /
ASSIEME MECCANISMO CASSETTA / MECANICA GRAB LECTURA CASSETTES





**CD MECHANISM / MECANIQUE CD / CD MECHANIK /
MECCANISMO CD / MECANICA CD**

MS6000

6/6

The description and characteristics given here are of informative significance only, and non committal. To keep up the high quality of our products, we reserve the right to make any changes or improvement without previous notice. • Les descriptions et caractéristiques figurant sur ce document sont données à titre d'information et non d'engagement. En effet, soucieux de la qualité de nos produits, nous nous réservons le droit d'effectuer, sans préavis, toute modification ou amélioration. • Die Beschreibungen und Daten in dieser Anleitung dienen nur zur Information und sind nicht bindend. Um die Qualität unserer Produkte ständig zu verbessern, behalten wir uns das Recht auf Änderungen vor. • Le descrizioni e le caratteristiche date su questo documento sono fornite a semplice titolo informativo e senza impegno. Ci riserviamo il diritto di eseguire, senza preavviso, qualsiasi modifica o miglioramento. • Las descripciones y características que figuran en este documento se dan a título de información y no de compromiso. En efecto, en bien de la calidad de nuestros productos, nos reservamos el derecho de efectuar, sin previo aviso, cualquier modificación o mejora.