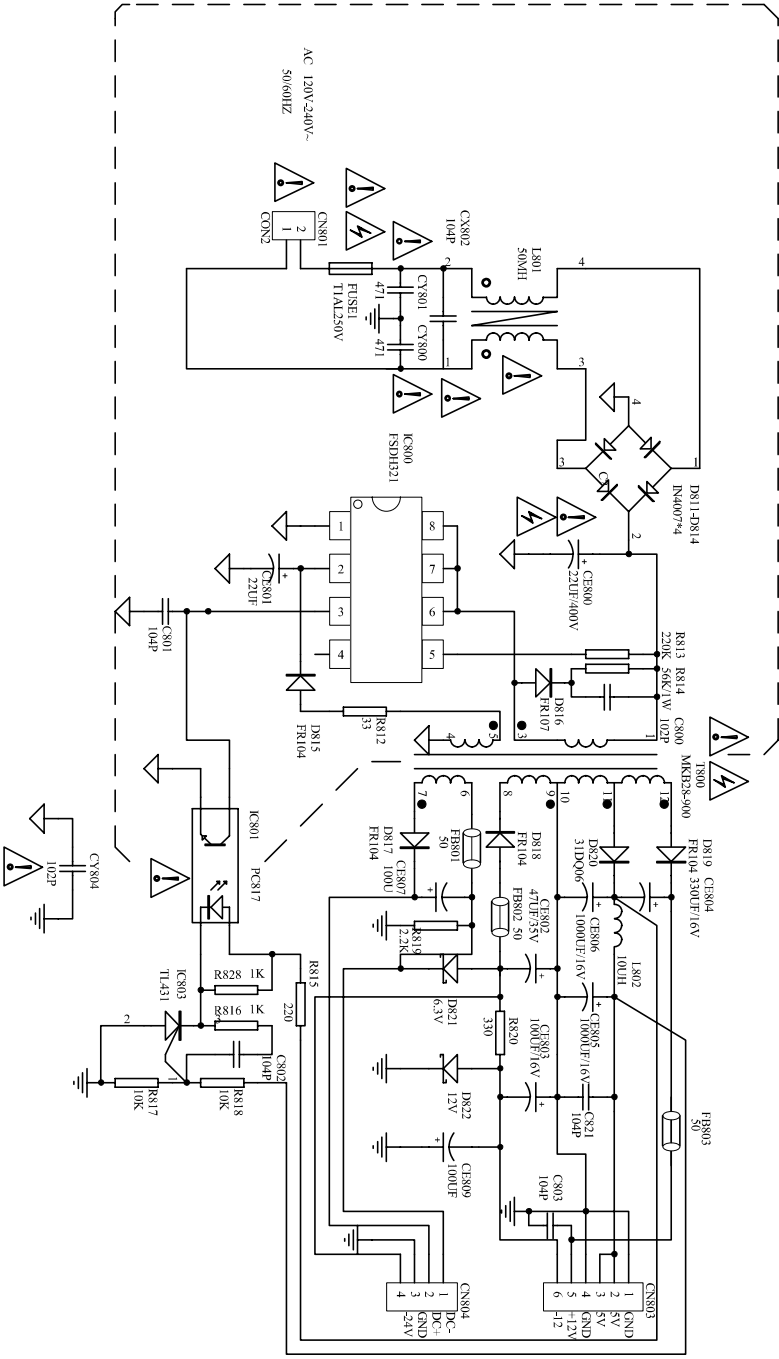


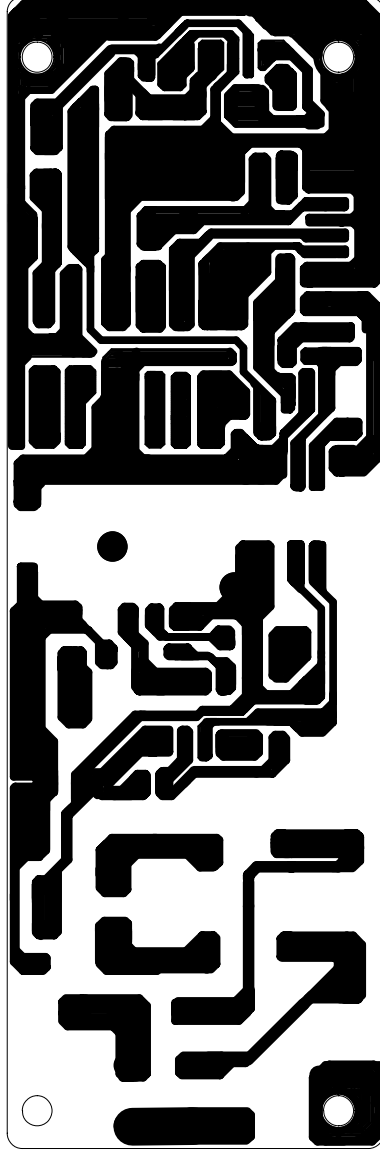
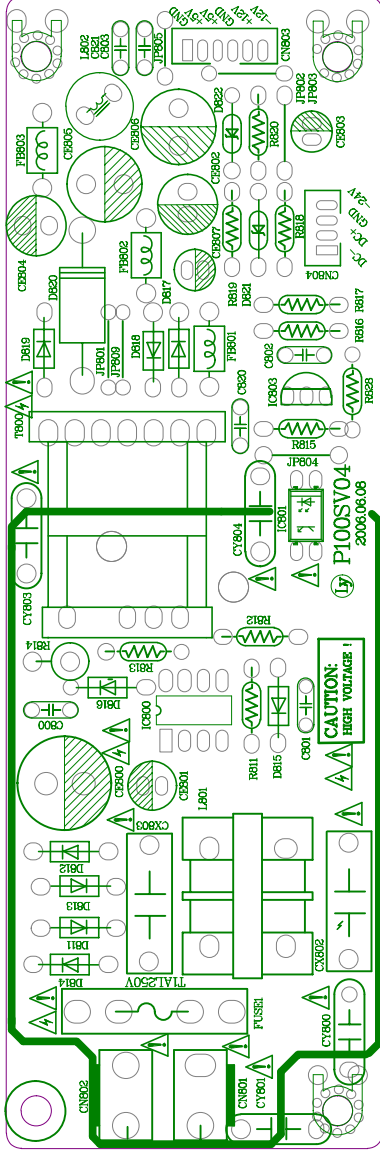
Power Board P100SV04



1 2 3 4 5 6

Title		P100SV04电源原理图	
Size	Number	Revision	
B			
Date	2010-06-20	Sheet of	1/1
File	E:\备份\PCB\P100SV01.DDB	Drawn By:	李朝拓

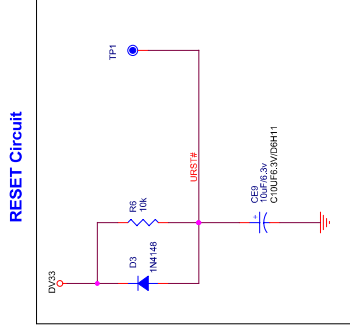
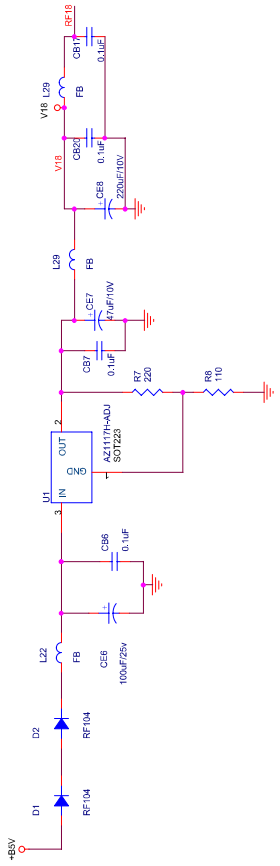
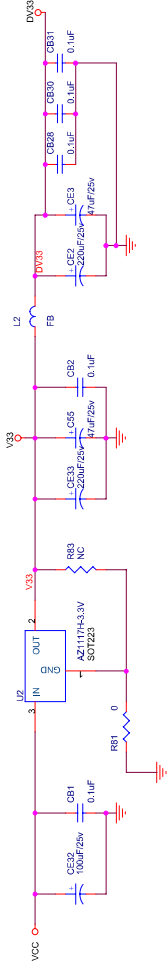
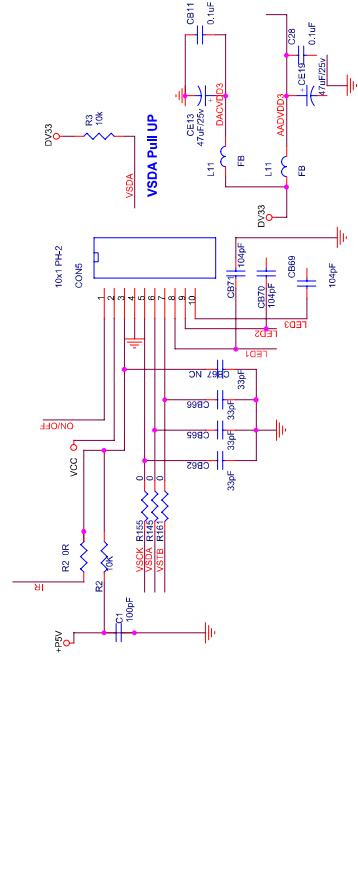
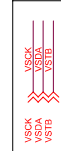
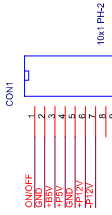
Power Board P100SV04



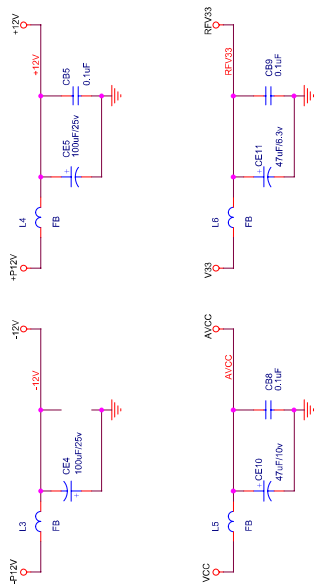
MT1389E (L-QFP216) DVD MP Board for SANYO HD60 PUH

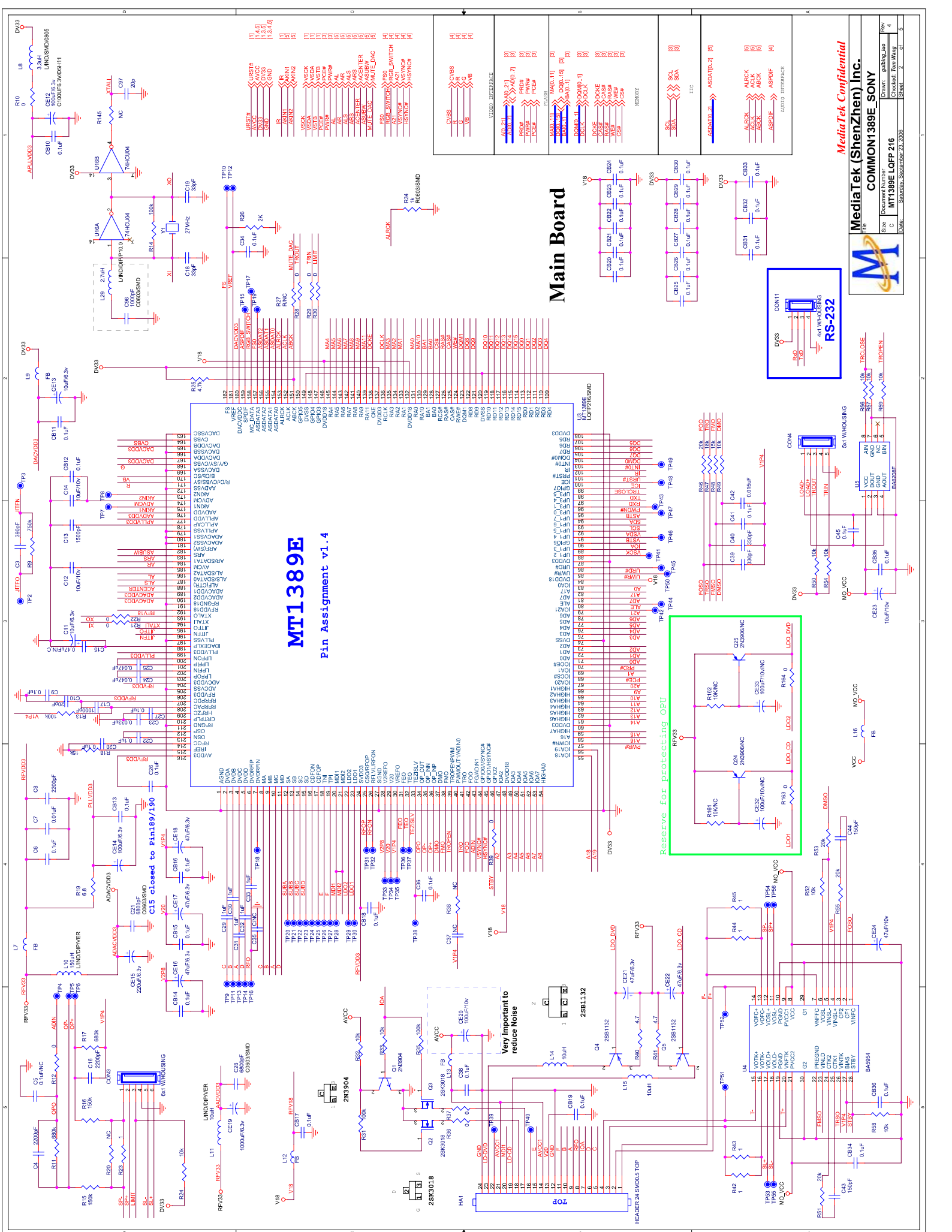
- 1 INDEX & POWER, RESET
- 2 MT1389E
- 3 SDRAM & FLASH
- 4 VIDEO OUT & AV-CON

NAME	TYPE	DEVICE	SUPPLY
VCC	Digital 5V		
DV33	Digital 3.3V	MT1389E	
RFV33	Servo 3.3V		
AV33	Laser Diode 3.3V	SDRAM	
V18	Digital 1.8V	OP AMP.	
SD33	Digital 3.3V		
+12V	Audio +12V		
-12V	Audio -12V		
AVDD5	Audio 5V		
DVDD3	Audio 3.3V		



Main Board





MT1389E

Pin Assignment v1.4

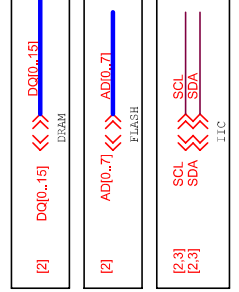
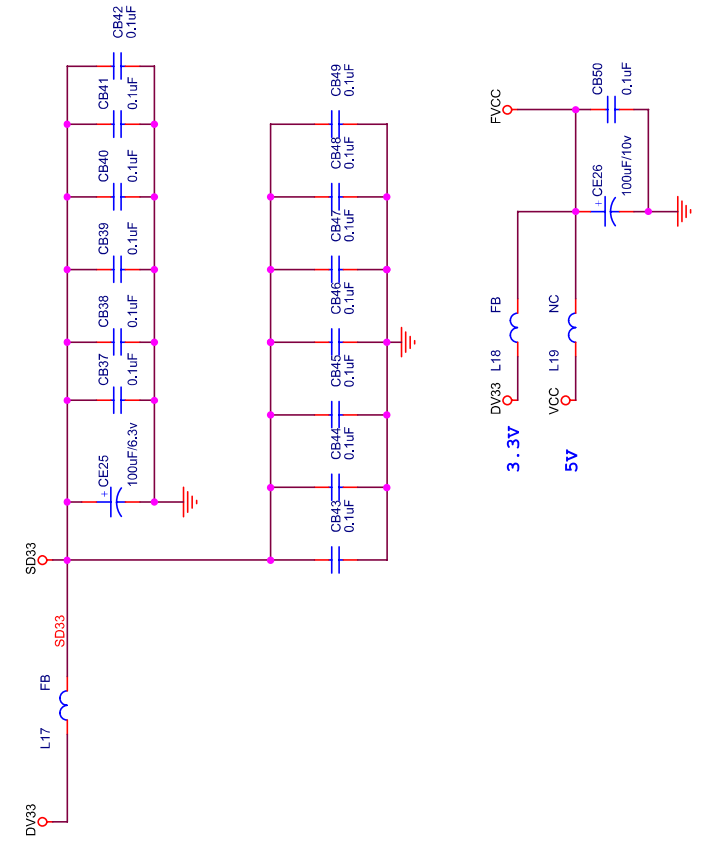
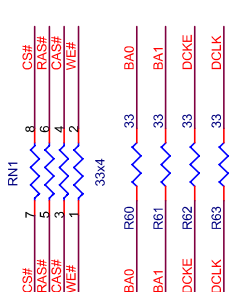
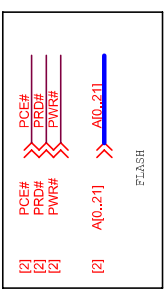
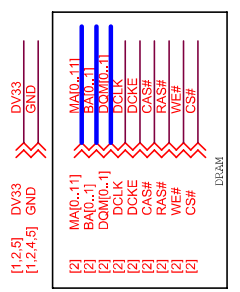
Main Board

VIDEO INTERFACE		AUDIO INTERFACE	
AUD_2IN	<>>> I2C_1	SCL	<>>> SCL_2
AUD_2L	<>>> I2C_1	SDA	<>>> SDA_2
AUD_2R	<>>> I2C_1	ASDATA[2]	<>>> ASDATA[2]
PROG	<>>> I2C_1	ALRCK	<>>> ALRCK
PROG	<>>> I2C_1	ASDFE	<>>> ASDFE
PCEN	<>>> I2C_1	ALBCK	<>>> ALBCK
PCEN	<>>> I2C_1	ASDFE	<>>> ASDFE
PCEN	<>>> I2C_1	ALRCK	<>>> ALRCK
PCEN	<>>> I2C_1	ASDFE	<>>> ASDFE
PCEN	<>>> I2C_1	ALRCK	<>>> ALRCK
PCEN	<>>> I2C_1	ASDFE	<>>> ASDFE

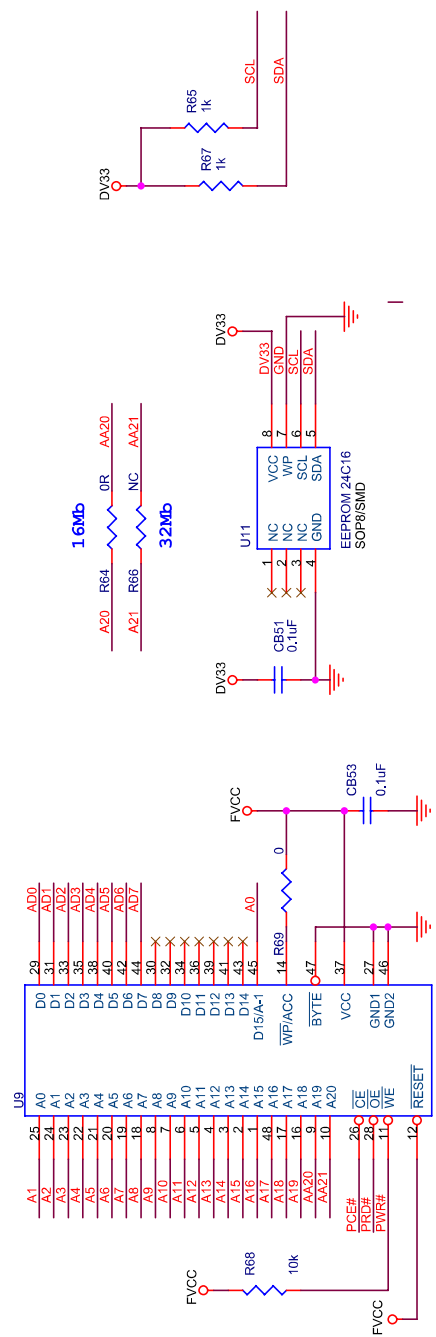


Reserve for protecting OPU

Very important to reduce Noise

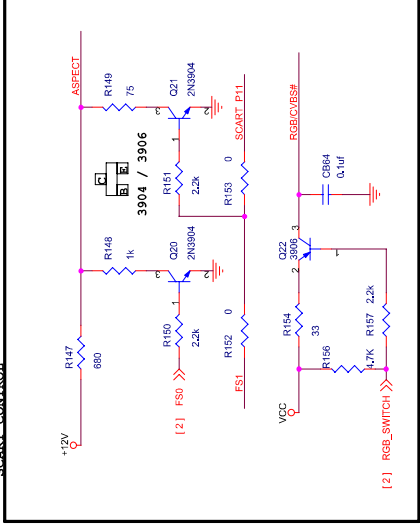


Main Board

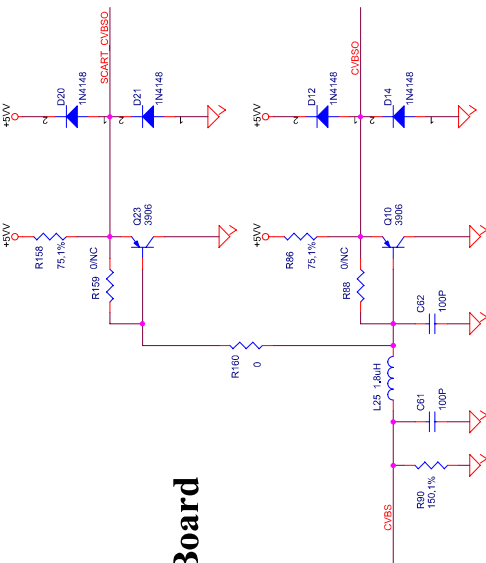


MediaTek (ShenZhen) Inc.
COMMON1389E_SONY
Title: COMMON1389E_SONY
Document Number: SDRAM&FLASH
Size: 4
B
Drawn: gulibing_luo
Checked: Tom Wang
Date: Saturday, September 23, 2006
Sheet: 3 of 5
Rev: 4

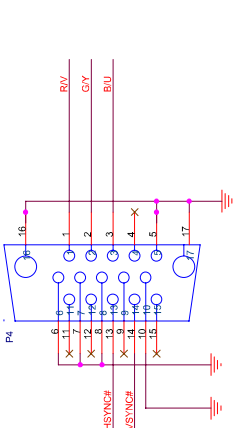
- [1,2,5] AVCC
- [1,2,3,4] GND
- [2] CVBS
- [2] R
- [2] VB
- [2] CVBSO
- [2] ASPDIF
- [2] RCH
- [2] LSCH
- [2] RSG
- [2] CENT
- [2] SUB
- [2] HSYNC#
- [2] VSINCH#
- [2] FS0
- [2] A21
- [2] RGB_SWITCH



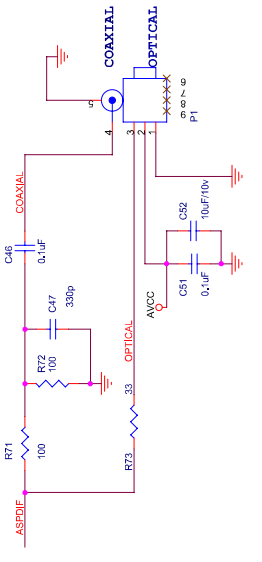
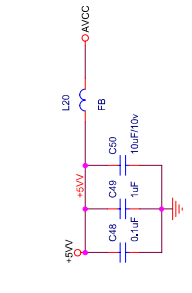
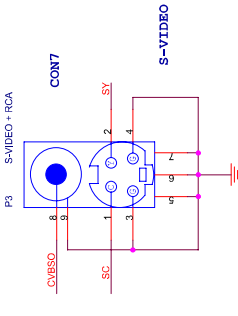
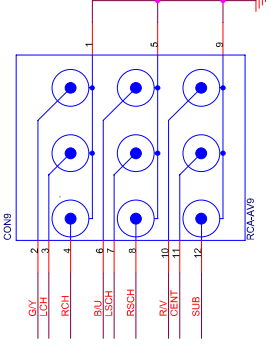
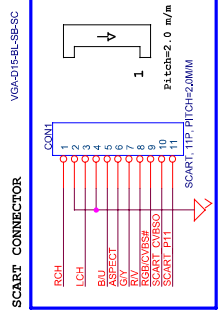
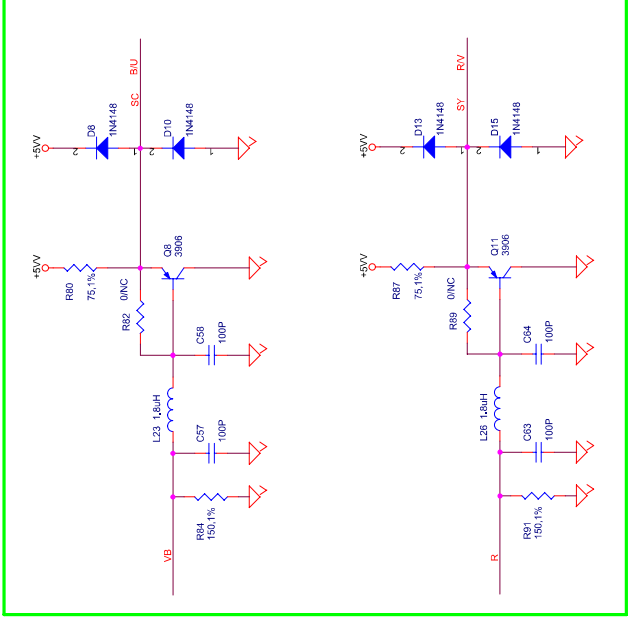
Main Board



Note: Video is the high resistance output



绿色实线框取之部分表示新加入或修改其Value

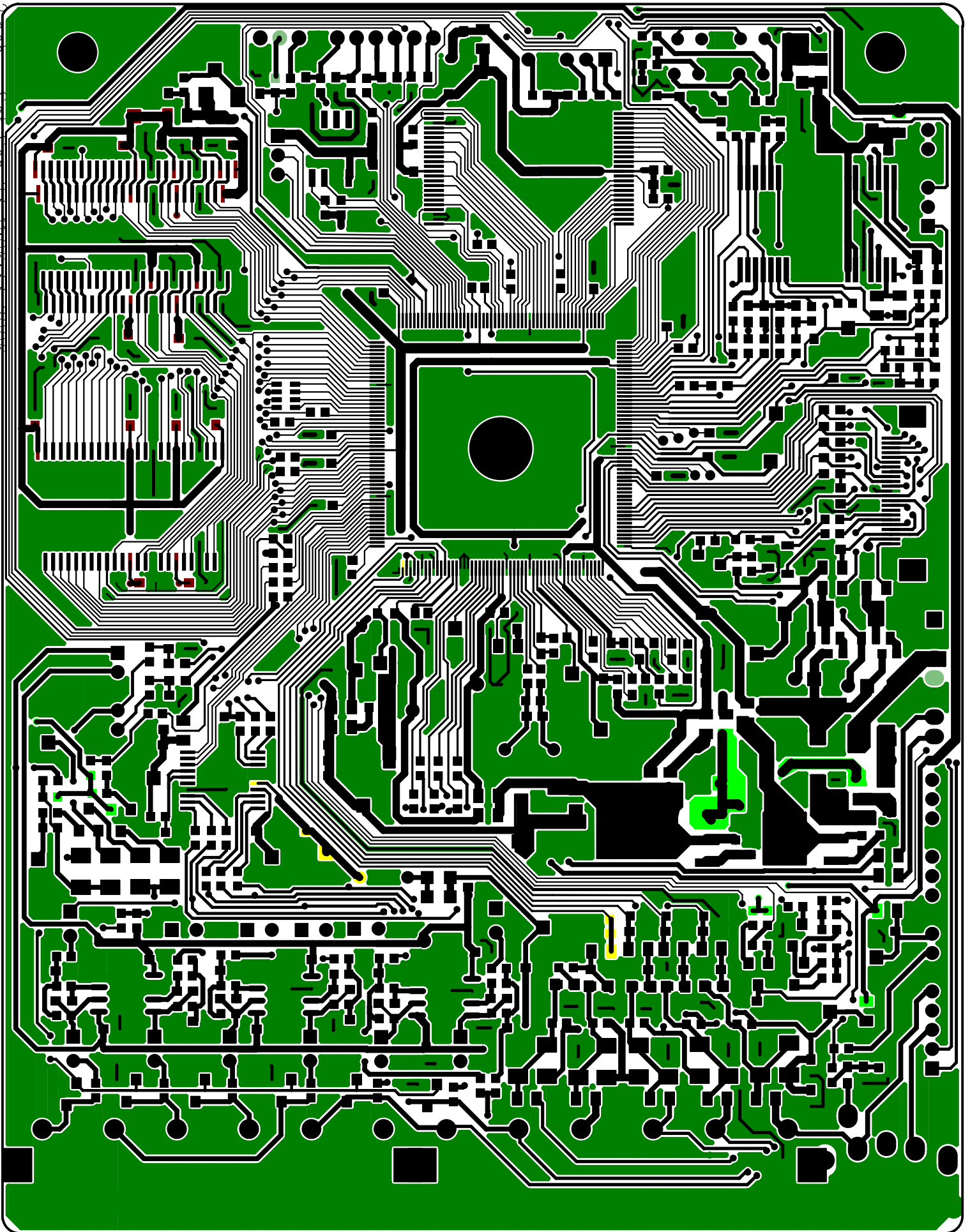


MediaTek Confidential



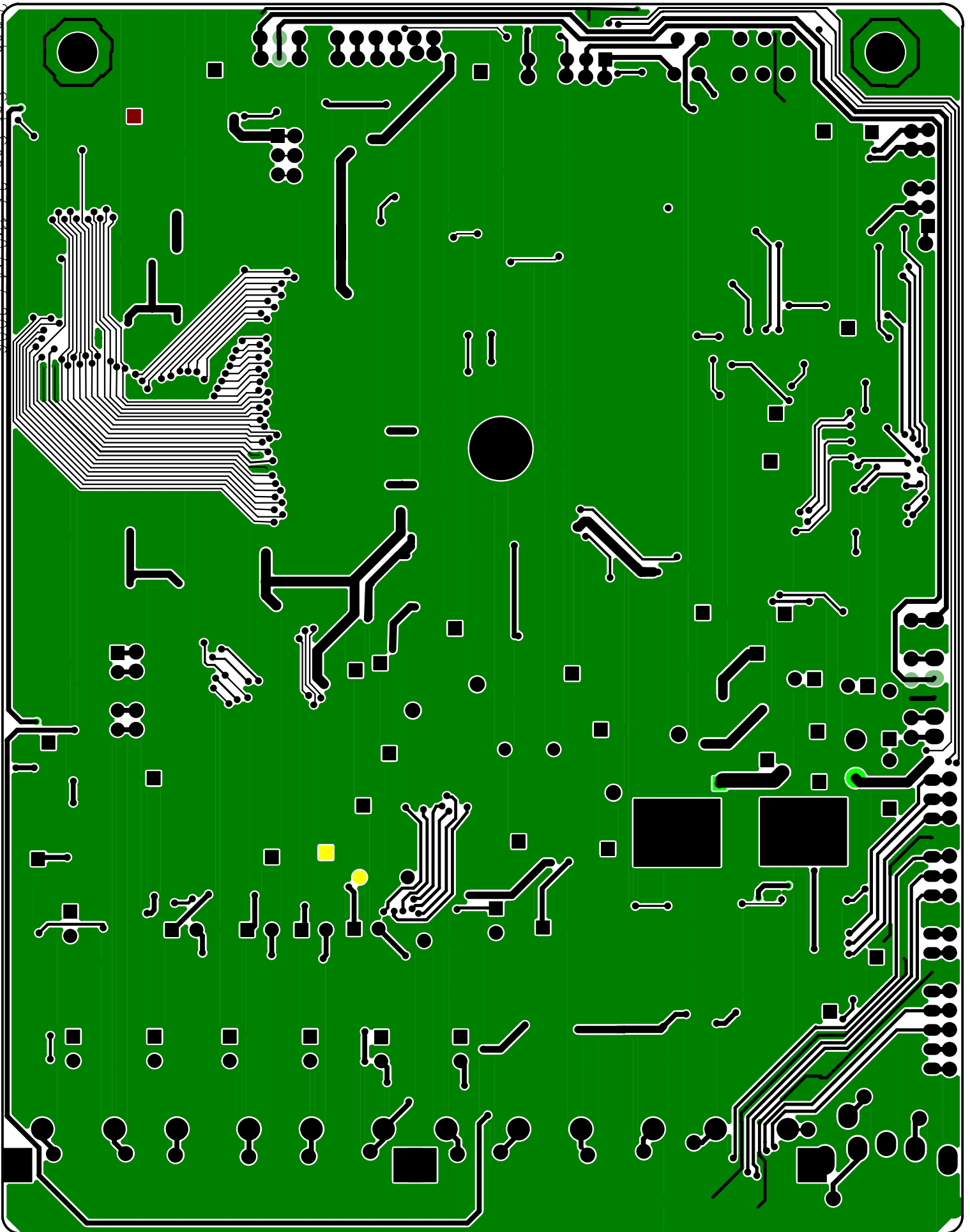
File	COMMON1389E_SONY
Size	Document Number
Drawn	gubing_luo
Checked	Tom Wang
Rev	4
Date	Saturday, September 23, 2006
Sheet	4 of 5

Main Board



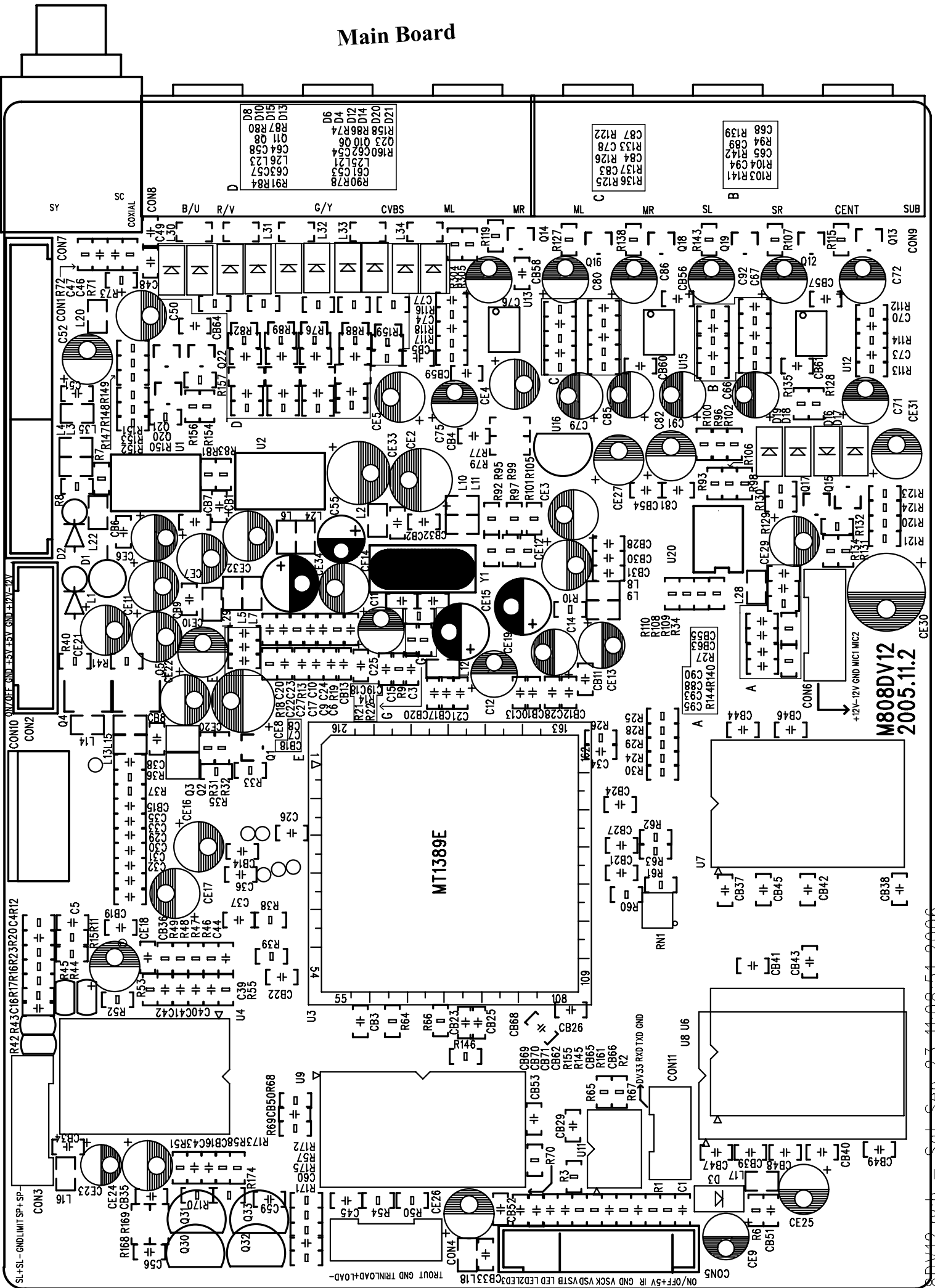
M808DV12.pcb - Sat Sep 23 11:06:55 2006

Main Board



M808DV12.pcb - Sat Sep 23 11:07:47 2006

Main Board



D8	D6
Q8D10	D4
R87R80	D12
Q11Q8	D14
R84C58	Q10Q6
R160C62C54	Q11Q8
L26L23	L29L27
C63C57	C61C53
R91R84	R90R78

C87	R122
R33	C78
C84	R126
R37	C83
R103	R141
R36	R125

C68	R139
R94	C79
C65	R142
R104	C94
R103	R141

MT1389E

M808DV12
2005.11.2

2Г+
2Г-
ГМЛ
2Р+
2Р-

ГМД\МД ВЗ+ ВЗ+ МД\ВЗ+ ВЗ-

2СА9Т
А2РЕС
КЕВ\С
МД
САВ2-2
МГ
МВ
МД
ЛСС
ОБЛАСЛ
МД
В\У
С\У
Р\У
А2УМС
Н2УМС

2У
СОХЛГ
2С

-QADJ
+QADJ
MRT
MAD
TUORT

BT2V
A2V
K22V
MAD
R
VZ+
TPO\MO
MAD LXD KXD DV22

Main Board

+ISA
-ISA
MAD
MCI
MCS

PART 4: Parts List DVD2420E

Power board P100SV04	
DIP Resistor 1/4W-1K	R816, R828
DIP Resistor 1/4W-10K	R818,R817,
DIP Resistor 1/4W-33Ω	R812
DIP Resistor 1W-56K	R814
DIP Resistor 1/4W-220Ω	R815
DIP Resistor 1/4W-220K	R813
DIP Resistor 1/4W-330Ω	R820
Monocap 50V-104	C801,C802,C803,C821
X2 Capacitor 275VAC-104K (±10%)	CX802
Capacitor 1000V-102	C800
Y1 Capacitor 400VAC-102K (F=10,±10%)	CY804
Electrolyze capacitor 16V-22UF (5*11)	CE801
Electrolyze capacitor 400V-22UF(13*21)	CE800
Y1 Capacitor 400VAC-471K (F=10,±10%)	CY800,CY801
Electrolyze capacitor 50V-47UF (6.3*11)	CE802
Electrolyze capacitor 16V-100UF (5*11)	CE803
Electrolyze capacitor 16V-1000UF(10*17)	CE805,CE806
Electrolyze capacitor 16V-330uF (8*11)	CE804
Inductor 0810-10UH	L802
DIP Magnet-bead 50Ω	FB802,FB803
DIP Regulator Diode 12V	D822
DIP Diode FR104	D815,D819,D818
DIP Diode FR107	D816
DIP Diode 31DQ06	D820
DIP Diode 1N4007	D811-D814
IC KA431AZTA(DIP)	IC803
IC PC817(DIP)	IC801
IC FSDH321(DIP)	IC800
Transformer BCK-EEL19-100	T800
Inductor ET20-50MH	L801
FUSED T1A250V	FUSE1
Mainboard M808DV12	
Electrolyze capacitor 16V-10UF (5*11)	C11,CE13,C66,C71,C75,C79,C85, C91,C12,C14,C50,C52
Electrolyze capacitor 16V-47UF (5*11)	CE11,CE16,CE17,CE18,CE21, CE22,CE3,C55,CE7,CE10,CE24
Electrolyze capacitor 16V-100UF (5*11)	CE12,CE14,CE25,CE26,CE20, CE31,CE4,CE5,CE6,CE32,CE9
Electrolyze capacitor 16V-220UF (6.3*11)	CE15,CE34,CE33,CE2,CE8,CE19
DIP Megnet-bead 120Ω	L1
DIP Diode FR104	D1,D2
DIP Transistor 8050	Q33,Q32
DIP Transistor 8550	Q30,Q31
Crystal-S 27.000MHZ	Y1
SMD Transistor 2SK3018	Q2,Q3
SMD Transistor 3904	Q1,Q12,Q13,Q14,Q16,Q18,Q19,Q20,Q21
SMD Transistor 3906	Q15,Q22
SMD Transistor KTA1664YRTF	Q4,Q5
IC AT24C16AN-10ST(SMD)	U11
IC AMS1117-ADJ(SMD)	U1
IC CX1117-3.3V(SMD)	U2
IC PT7954(SMD)	U4
IC AZ4558(SMD)	U12 U13 U15
IC K4S641632H-UC60(SMD)	U8
IC MT1389DE/E(SMD)	U3

PART 4: Parts List DVD2420E

t

IC KH29LV160CBTC-70G(SMD)	U9
SMD Resistor 0603-0 Ω	R10,R12,R28,R29,R30,R39,R69,R81,R128, R145,R146,R155,R161,R64,R152,C93
SMD Resistor 0603-1 Ω	R23
SMD Resistor 0805-1 Ω	R168,R169,R42,R43,R44,R45
SMD Resistor 0603-1K	R65,R67,R172,R174,R157,R148
SMD Resistor 0603-10 Ω	R2,R120
SMD Resistor 0603-10K	R1,R3,R6,R24,R32,R33,R49, R50,R52,R54,R58,R68,R70 R103,R113,R117,R125,R136,R141
SMD Resistor 0603-15K	R18,R48
SMD Resistor 0603-18K	R47
SMD Resistor 0603-20K	R46,R51,R53,R55
SMD Resistor 0603-2.2K	R150,R151
SMD Resistor 0603-22K	R123
SMD Resistor 0603-30K	R94,R112,R116,R122,R133,R139
SMD Resistor 0603-33 Ω	R60,R61,R62,R63,R73
SMD Line-resistor 0603-33 Ω *4	RN1
SMD Resistor 0603-4.7K	R25,
SMD Resistor 0603-4.7 Ω	R40,R41
SMD Resistor 0603-5.1K	R104,R114,R118,R126,R137,R142
SMD Resistor 0603-56 Ω	R149
SMD Resistor 0603-6.8 Ω	R19
SMD Resistor 0603-75 Ω -1%	R78,R84,R90,R91
SMD Resistor 0603-100 Ω	R36,R37,R71,R72,R107,R115, R119,R127,R138,R143
SMD Resistor 0603-100K	R13,R14,R31,R35
SMD Resistor 0603-110 Ω	R8
SMD Resistor 0603-150K	R16,R15
SMD Resistor 0603-180 Ω	R154
SMD Resistor 0603-220 Ω	R7,R170,R171
SMD Resistor 0603-470 Ω	R124
SMD Resistor 0603-560 Ω	R26
SMD Resistor 0603-680 Ω	R173,R175,R147
SMD Resistor 0603-680K	R11,R17
SMD Resistor 0603-750K	R9
SMD Capacitor 0603-1UF	C29,C30,C31,C32,C33
SMD Capacitor 0603-0.1UF	CB1,CB2,CB5,CB6,CB7,CB8,CB9,CB10,CB11, C34,C36,C38,C41,C51,C56,C46,CB68,CB71 CB57,CB58,CB59,CB60,CB61,C6,C9,C20,C22,C26,C27 CB40,CB41,CB43,CB47,CB48,CB50,CB51,CB52,CB56 CB27,CB28,CB30,CB31,CB33,CB34,CB35,CB36,CB39, CB20,CB21,CB22,CB23,CB24,CB25,CB26, CB12,CB13,CB14,CB15,CB16,CB17,CB18,CB19,
SMD Capacitor 0603-0.01UF	C7
SMD Capacitor 0603-0.015UF	C42
SMD Capacitor 0603-20P	C10
SMD Capacitor 0603-33PF	C18,C19,CB62,CB65,CB66
SMD Capacitor 0603-0.033UF	C23
SMD Capacitor 0603-0.047UF	C24,C25
SMD Capacitor 0603-100PF	C1,C65,C70,C74,C78,C84,C89,C53, C54,C57,C58,C61,C62,C63,C64
SMD Capacitor 0603-1000PF	C17,C68,C73,C77,C83,C87,C94
SMD Capacitor 0603-150PF	C43,C44
SMD Capacitor 0603-1500PF	C13
SMD Capacitor 0603-2200PF	C4,C16

PART 4: Parts List DVD2420E

1

SMD Capacitor 0603-330PF	C39,C40,C47
SMD Capacitor 0603-390PF	C3,C60,C59
SMD Capacitor 0603-6800PF	C21,C28
SMD Inductor 0805-10UH	L11,L14,L15
SMD Inductor 0805-1.8UH	L21,L23,L25,L26
SMD Inductor 0805-3.3UH	L8
SMD Magnet-bead 0603-120 Ω	R21,R22,R144
SMD Magnet-bead 0805-120 Ω	L2,L3,L4,L5,L6,L9,L12,L13,L16,L17,L18,L20
	L22,L24,L29,L35,L30,L31,L32,L33
SMD Magnet-bead 0805-150 Ω	L10
SMD Diode 1N4148	D3,D4,D6,D8,D10,D12,D13,D14,D15,D16,D17,D18
SMD Connector 24P-0.5	CON10
OK Board K815SV11	
DIP Resistor 1/6W-1K	R1 R12
DIP Resistor 1/6W-18K Ω	R16 R9
DIP Resistor 1/6W-4.7K	R2 R10
DIP Resistor 1/6W-47K	R14 R5 R6
DIP Resistor 1/6W-470 Ω	R4 R15
Electrolyze capacitor 50V-1UF (5*11)	C1 C2
Monocap 50V-104	C9 C10
Monocap 50V-101	C6 C7
Electrolyze capacitor 16V-0.47UF (5*11)	EC1 EC2
Electrolyze capacitor 16V-100UF (5*11)	EC3 EC4
DIP Inductor 1UH	L1 L2
IC AZ4558(DIP)	U1
Jack CK3-6.35-309	MIC1 MIC2
Output board DVDR838SV01	
Monocap 50V-104	C7
Monocap 50V-22P	C6,
Electrolyze capacitor 16V-100UF (5*11)	C8
Output board DVDR838SV01	
VGA EV-0.15FC	J2
SCART RC-2106	J3
Optical BFTX-1001/HB	J1
Pickup KHM-313AAA	
Front board F816BDV01	
DIP Resistor 1/6W-1K	R8 R9 R10
DIP Resistor 1/6W-10K	R4 R5 R6 R13 R14 R15
DIP Resistor 1/6W-18K Ω	R3
DIP Resistor 1/6W-47 Ω	R7 R12
DIP Resistor 1/6W-56 Ω	R11
DIP Resistor 1/6W-75 Ω	R2
Electrolyze capacitor 16V-100UF (5*7)	C1, C2
Monocap 50V-104	C3
Emitter Diode Φ 5 7color	LED1 LED2
Emitter Diode Φ 3 RD4(red)	J2
DIP Transistor 8050	Q1 Q2 Q3
IC TM1628(SMD)	U1
LED ZDC-25202BB-15(BLUE)	
Touch Switch 6*6*5	W1 W2 W3 W4 W5
Receptor Diode BRM-4020-8-F1322	REM

PART 4: Parts List DVD2417E ¹

Power board P100SV04	
DIP Resistor 1/4W-1K	R816, R828
DIP Resistor 1/4W-10K	R818,R817,
DIP Resistor 1/4W-33Ω	R812
DIP Resistor 1W-56K	R814
DIP Resistor 1/4W-220Ω	R815
DIP Resistor 1/4W-220K	R813
DIP Resistor 1/4W-330Ω	R820
Monocap 50V-104	C801,C802,C803,C821
X2 Capacitor 275VAC-104K (±10%)	CX802
Capacitor 1000V-102	C800
Y1 Capacitor 400VAC-102K (F=10,±10%)	CY804
Electrolyze capacitor 16V-22UF (5*11)	CE801
Electrolyze capacitor 400V-22UF(13*21)	CE800
Y1 Capacitor 400VAC-471K (F=10,±10%)	CY800,CY801
Electrolyze capacitor 50V-47UF (6.3*11)	CE802
Electrolyze capacitor 16V-100UF (5*11)	CE803
Electrolyze capacitor 16V-1000UF(10*17)	CE805,CE806
Electrolyze capacitor 16V-330uF (8*11)	CE804
Inductor 0810-10UH	L802
DIP Magnet-bead 50Ω	FB802,FB803
DIP Regulator Diode 12V	D822
DIP Diode FR104	D815,D819,D818
DIP Diode FR107	D816
DIP Diode 31DQ06	D820
DIP Diode 1N4007	D811-D814
IC KA431AZTA(DIP)	IC803
IC PC817(DIP)	IC801
IC FSDH321(DIP)	IC800
Transformer BCK-EEL19-100	T800
Inductor ET20-50MH	L801
FUSED T1A250V	FUSE1
Mainboard M808DV12	
Electrolyze capacitor 16V-10UF (5*11)	C11,CE13,C66,C71,C75,C79,C85, C91,C12,C14,C50,C52
Electrolyze capacitor 16V-47UF (5*11)	CE11,CE16,CE17,CE18,CE21, CE22,CE3,C55,CE7,CE10,CE24
Electrolyze capacitor 16V-100UF (5*11)	CE12,CE14,CE25,CE26,CE20, CE31,CE4,CE5,CE6,CE32,CE9
Electrolyze capacitor 16V-220UF (6.3*11)	CE15,CE34,CE33,CE2,CE8,CE19
DIP Megnet-bead 120Ω	L1
DIP Diode FR104	D1,D2
DIP Transistor 8050	Q33,Q32
DIP Transistor 8550	Q30,Q31
Crystal-S 27.000MHZ	Y1
SMD Transistor 2SK3018	Q2,Q3
SMD Transistor 3904	Q1,Q12,Q13,Q14,Q16,Q18,Q19,Q20,Q21
SMD Transistor 3906	Q15,Q22
SMD Transistor KTA1664YRTF	Q4,Q5
IC AT24C16AN-10ST(SMD)	U11
IC AMS1117-ADJ(SMD)	U1
IC CX1117-3.3V(SMD)	U2
IC PT7954(SMD)	U4
IC AZ4558(SMD)	U12 U13 U15
IC K4S641632H-UC60(SMD)	U8
IC MT1389DE/E(SMD)	U3

PART 4: Parts List DVD2417E ¹

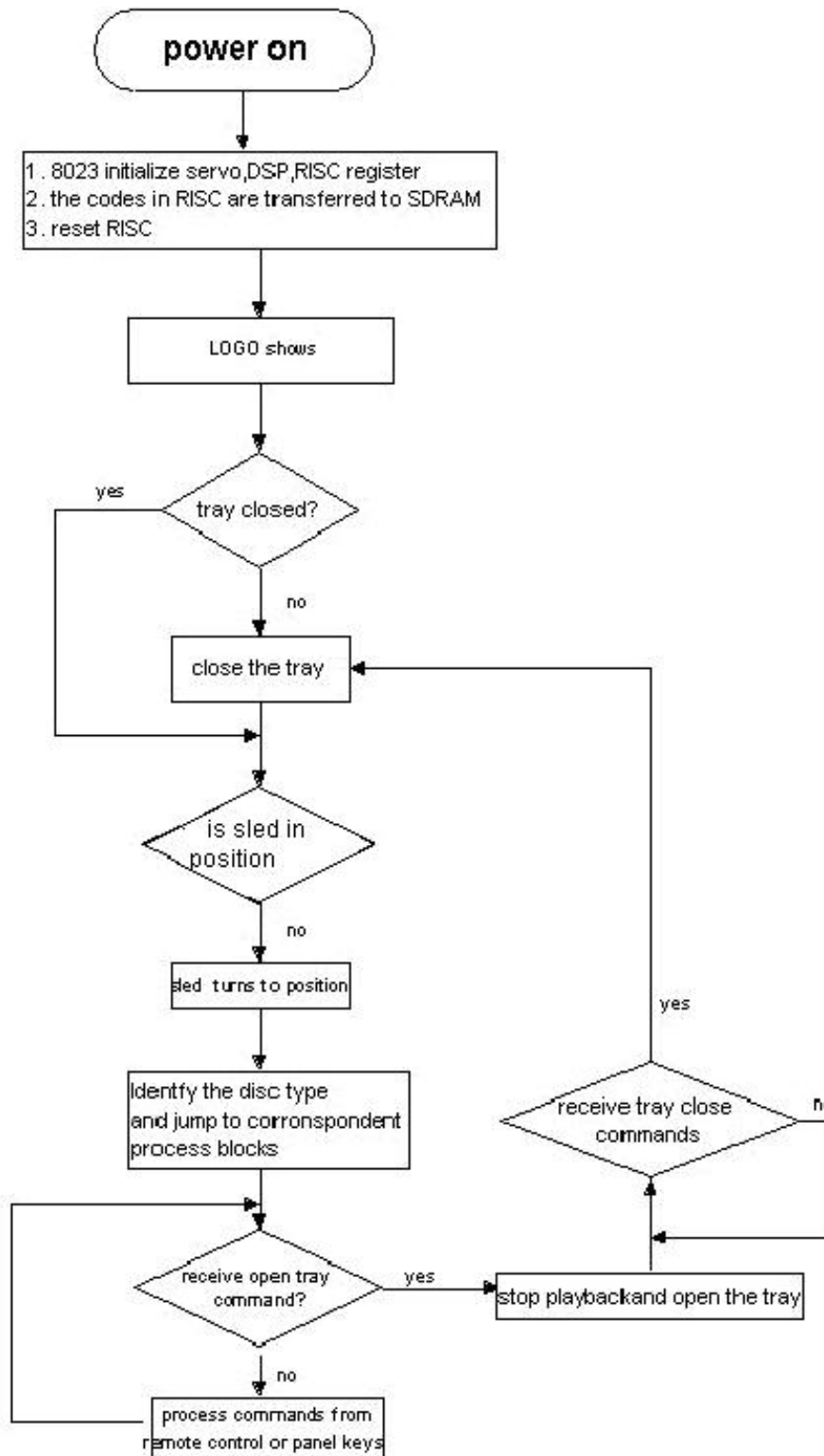
IC KH29LV160CBTC-70G(SMD)	U9
SMD Resistor 0603-0 Ω	R10,R12,R28,R29,R30,R39,R69,R81,R128, R145,R146,R155,R161,R64,R152,C93
SMD Resistor 0603-1 Ω	R23
SMD Resistor 0805-1 Ω	R168,R169,R42,R43,R44,R45
SMD Resistor 0603-1K	R65,R67,R172,R174,R157,R148
SMD Resistor 0603-10 Ω	R2,R120
SMD Resistor 0603-10K	R1,R3,R6,R24,R32,R33,R49, R50,R52,R54,R58,R68,R70 R103,R113,R117,R125,R136,R141
SMD Resistor 0603-15K	R18,R48
SMD Resistor 0603-18K	R47
SMD Resistor 0603-20K	R46,R51,R53,R55
SMD Resistor 0603-2.2K	R150,R151
SMD Resistor 0603-22K	R123
SMD Resistor 0603-30K	R94,R112,R116,R122,R133,R139
SMD Resistor 0603-33 Ω	R60,R61,R62,R63,R73
SMD Line-resistor 0603-33 Ω *4	RN1
SMD Resistor 0603-4.7K	R25,
SMD Resistor 0603-4.7 Ω	R40,R41
SMD Resistor 0603-5.1K	R104,R114,R118,R126,R137,R142
SMD Resistor 0603-56 Ω	R149
SMD Resistor 0603-6.8 Ω	R19
SMD Resistor 0603-75 Ω -1%	R78,R84,R90,R91
SMD Resistor 0603-100 Ω	R36,R37,R71,R72,R107,R115, R119,R127,R138,R143
SMD Resistor 0603-100K	R13,R14,R31,R35
SMD Resistor 0603-110 Ω	R8
SMD Resistor 0603-150K	R16,R15
SMD Resistor 0603-180 Ω	R154
SMD Resistor 0603-220 Ω	R7,R170,R171
SMD Resistor 0603-470 Ω	R124
SMD Resistor 0603-560 Ω	R26
SMD Resistor 0603-680 Ω	R173,R175,R147
SMD Resistor 0603-680K	R11,R17
SMD Resistor 0603-750K	R9
SMD Capacitor 0603-1UF	C29,C30,C31,C32,C33
SMD Capacitor 0603-0.1UF	CB1,CB2,CB5,CB6,CB7,CB8,CB9,CB10,CB11, C34,C36,C38,C41,C51,C56,C46,CB68,CB71 CB57,CB58,CB59,CB60,CB61,C6,C9,C20,C22,C26,C27 CB40,CB41,CB43,CB47,CB48,CB50,CB51,CB52,CB56 CB27,CB28,CB30,CB31,CB33,CB34,CB35,CB36,CB39, CB20,CB21,CB22,CB23,CB24,CB25,CB26, CB12,CB13,CB14,CB15,CB16,CB17,CB18,CB19,
SMD Capacitor 0603-0.01UF	C7
SMD Capacitor 0603-0.015UF	C42
SMD Capacitor 0603-20P	C10
SMD Capacitor 0603-33PF	C18,C19,CB62,CB65,CB66
SMD Capacitor 0603-0.033UF	C23
SMD Capacitor 0603-0.047UF	C24,C25
SMD Capacitor 0603-100PF	C1,C65,C70,C74,C78,C84,C89,C53, C54,C57,C58,C61,C62,C63,C64
SMD Capacitor 0603-1000PF	C17,C68,C73,C77,C83,C87,C94
SMD Capacitor 0603-150PF	C43,C44
SMD Capacitor 0603-1500PF	C13
SMD Capacitor 0603-2200PF	C4,C16

PART 4: Parts List DVD2417E 1

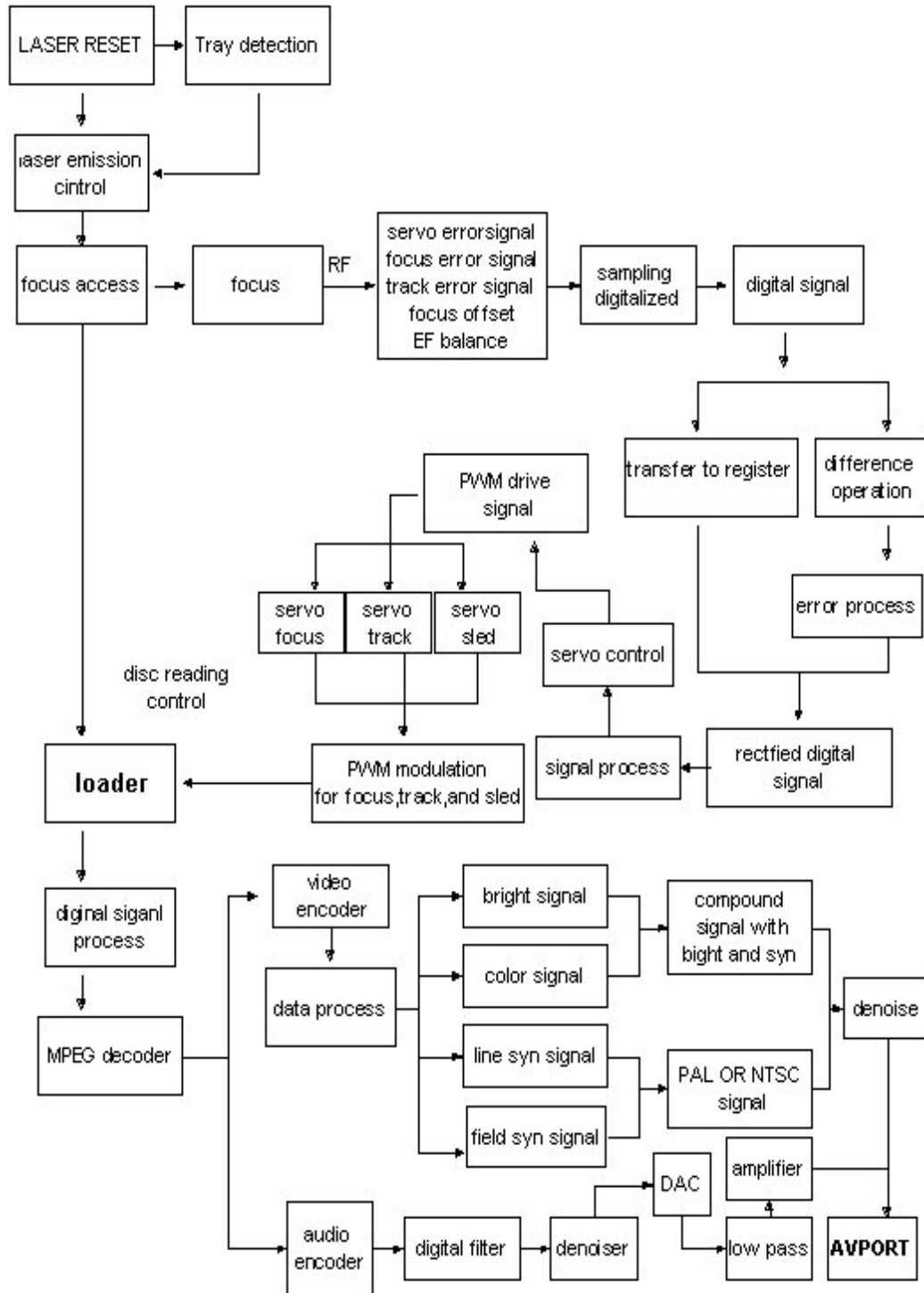
SMD Capacitor 0603-330PF	C39,C40,C47
SMD Capacitor 0603-390PF	C3,C60,C59
SMD Capacitor 0603-6800PF	C21,C28
SMD Inductor 0805-10UH	L11,L14,L15
SMD Inductor 0805-1.8UH	L21,L23,L25,L26
SMD Inductor 0805-3.3UH	L8
SMD Magnet-bead 0603-120 Ω	R21,R22,R144
SMD Magnet-bead 0805-120 Ω	L2,L3,L4,L5,L6,L9,L12,L13,L16,L17,L18,L20
	L22,L24,L29,L35,L30,L31,L32,L33
SMD Magnet-bead 0805-150 Ω	L10
SMD Diode 1N4148	D3,D4,D6,D8,D10,D12,D13,D14,D15,D16,D17,D18
SMD Connector 24P-0.5	CON10
OK Board K815SV11	
DIP Resistor 1/6W-1K	R1 R12
DIP Resistor 1/6W-18K Ω	R16 R9
DIP Resistor 1/6W-4.7K	R2 R10
DIP Resistor 1/6W-47K	R14 R5 R6
DIP Resistor 1/6W-470 Ω	R4 R15
Electrolyze capacitor 50V-1UF (5*11)	C1 C2
Monocap 50V-104	C9 C10
Monocap 50V-101	C6 C7
Electrolyze capacitor 16V-0.47UF (5*11)	EC1 EC2
Electrolyze capacitor 16V-100UF (5*11)	EC3 EC4
DIP Inductor 1UH	L1 L2
IC AZ4558(DIP)	U1
Jack CK3-6.35-309	MIC1 MIC2
Output board DVDR838SV01	
Monocap 50V-104	C7
Monocap 50V-22P	C6,
Electrolyze capacitor 16V-100UF (5*11)	C8
VGA EV-0.15FC	J2
SCART RC-2106	J3
Optical BFTX-1001/HB	J1
Pickup KHM-313AAA	
Front board F815DV03	
DIP Resistor 1/6W-10K	R4 R5 R6
DIP Resistor 1/6W-18K Ω	R3
DIP Resistor 1/6W-68 Ω	R9
DIP Resistor 1/6W-75 Ω	R2
Electrolyze capacitor 16V-100UF (5*7)	C1 C2
Monocap 50V-104	C3 C4
Emitter Diode Φ 3 RD4(red)	J2
IC TM1628(SMD)	
LED ZDC-2502 (Orange)	
Touch Switch 6*6*5	W1 W2 W3 W4 W5
Receptor Diode BRM-4020-8-F1322	REM

Part 5 Debugging Procedure

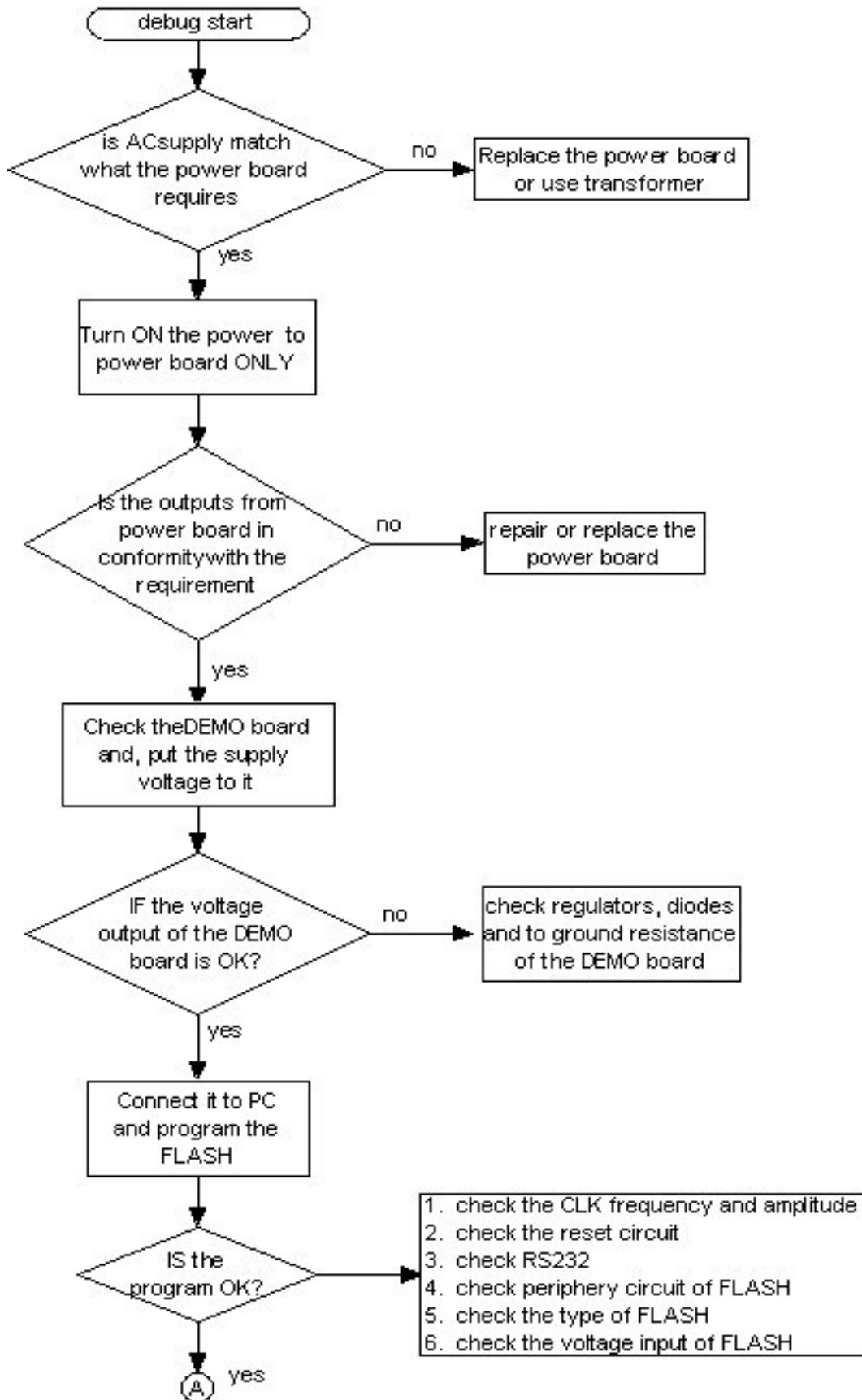
1. Work flow Of The System

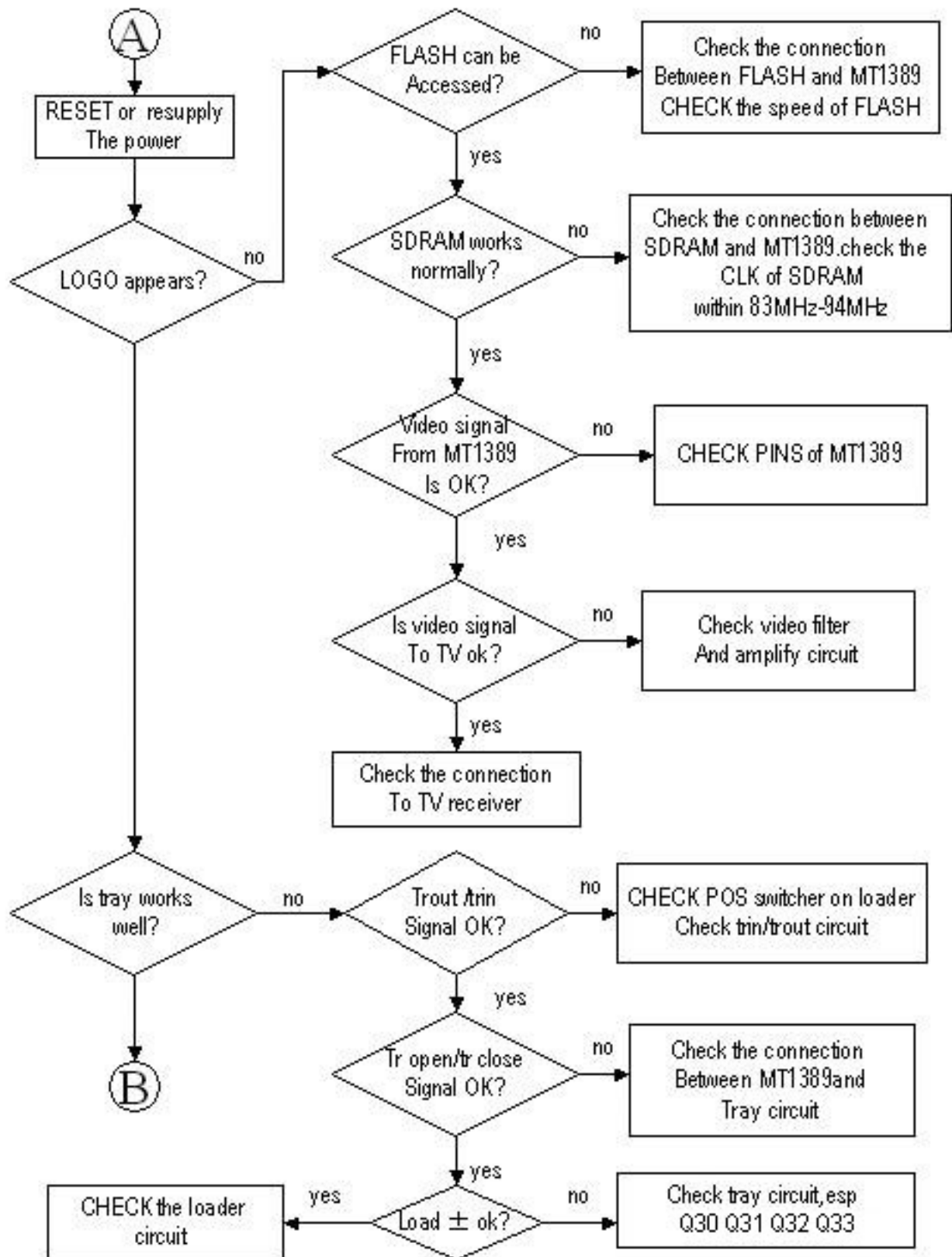


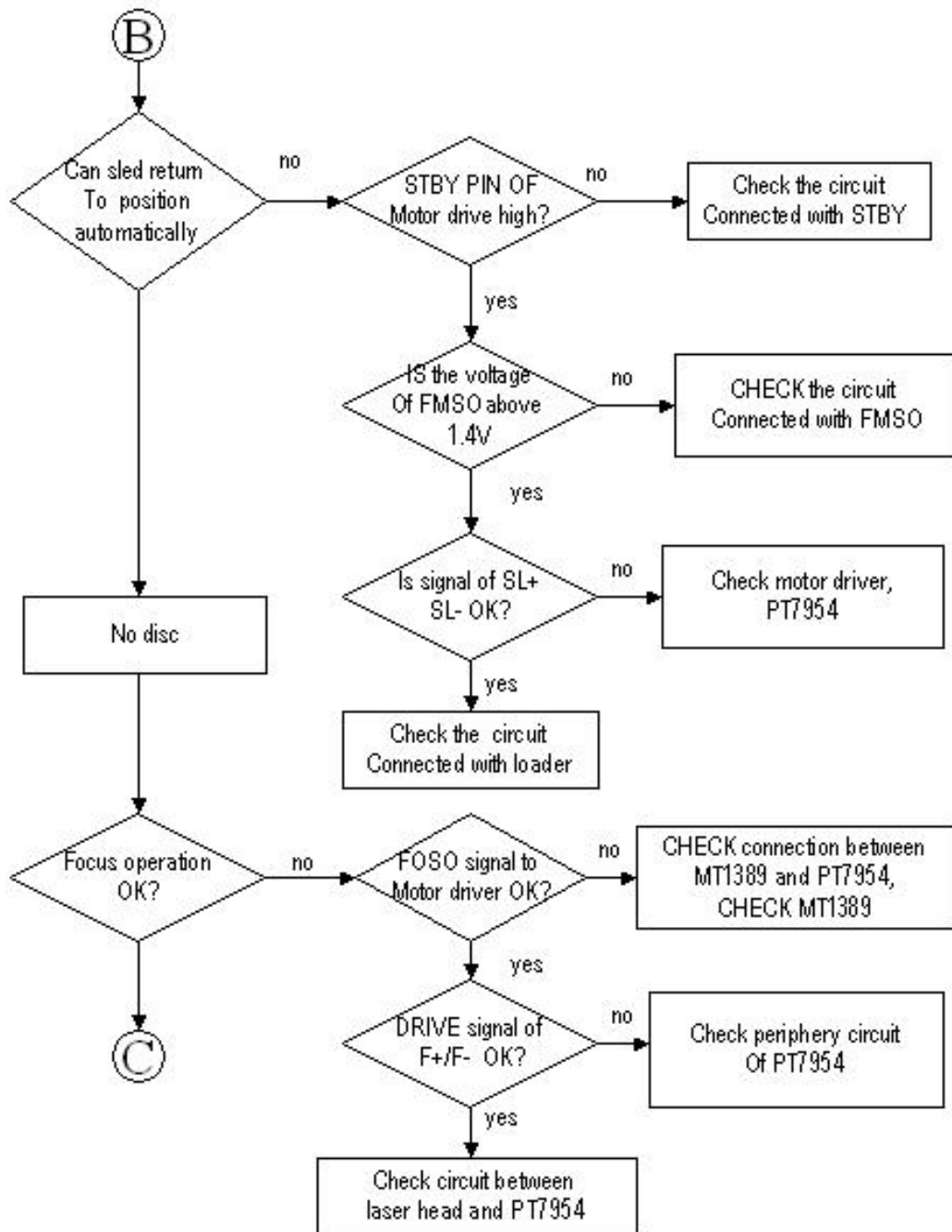
2. signal process diagram

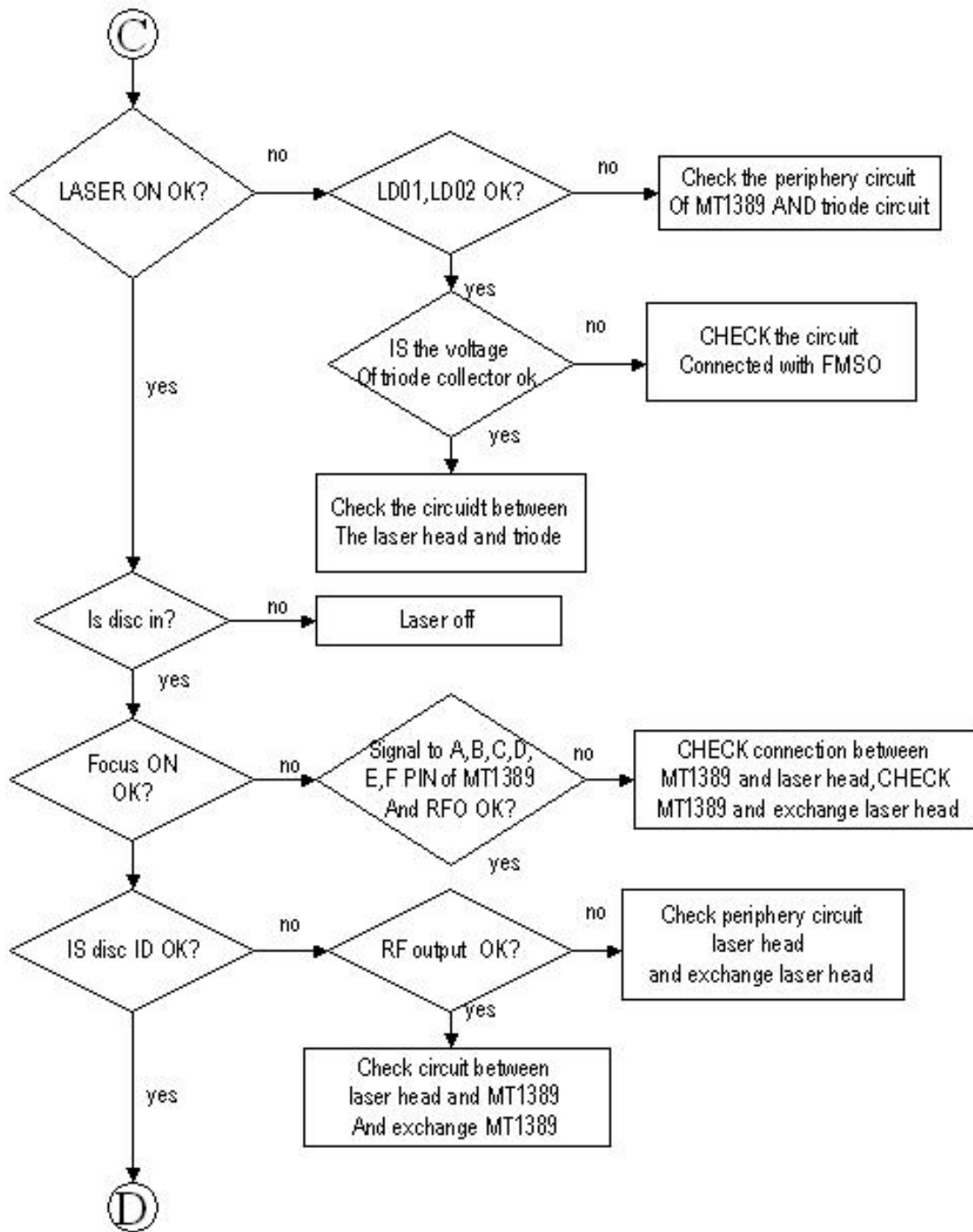


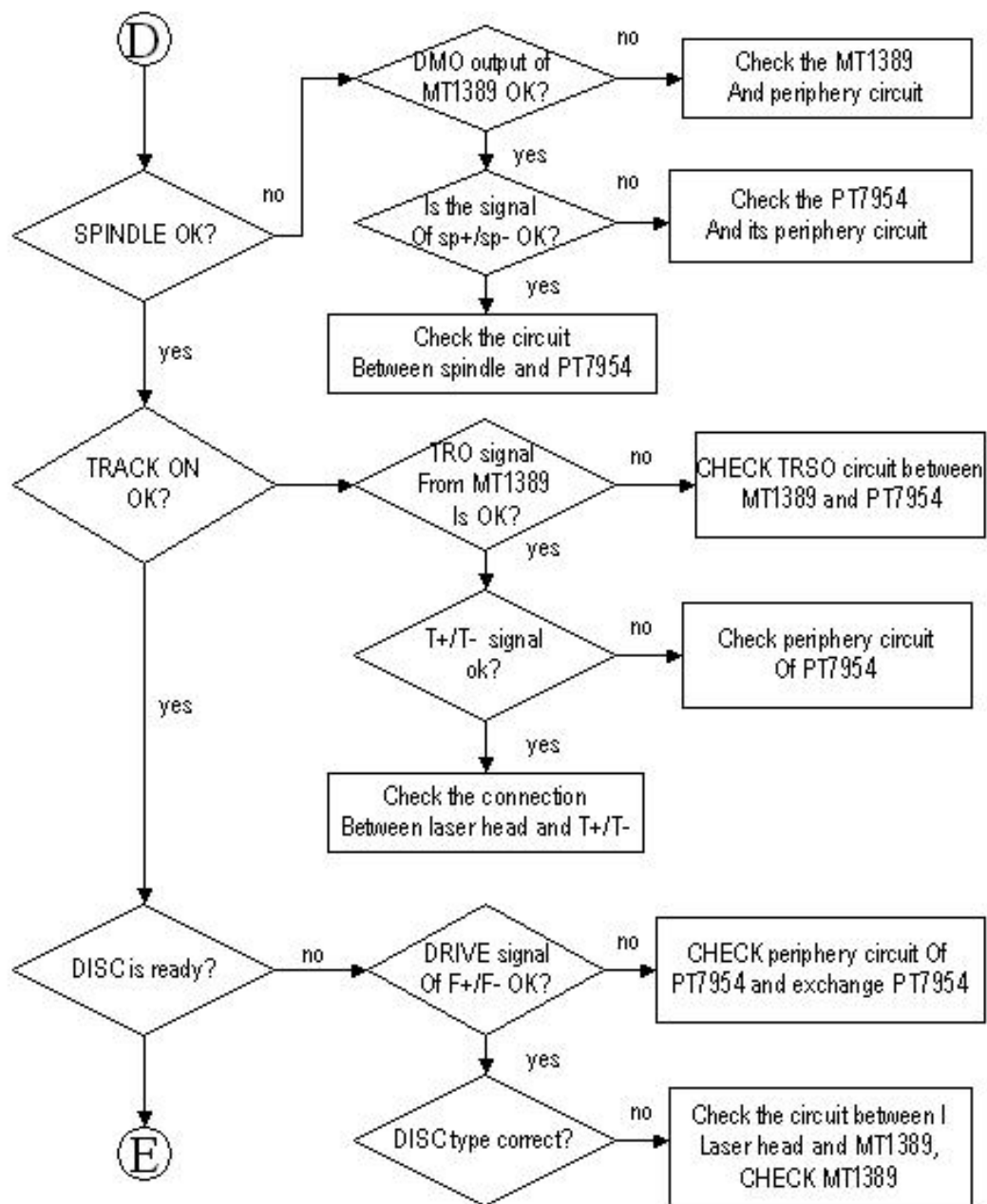
3. Debugging Strategy

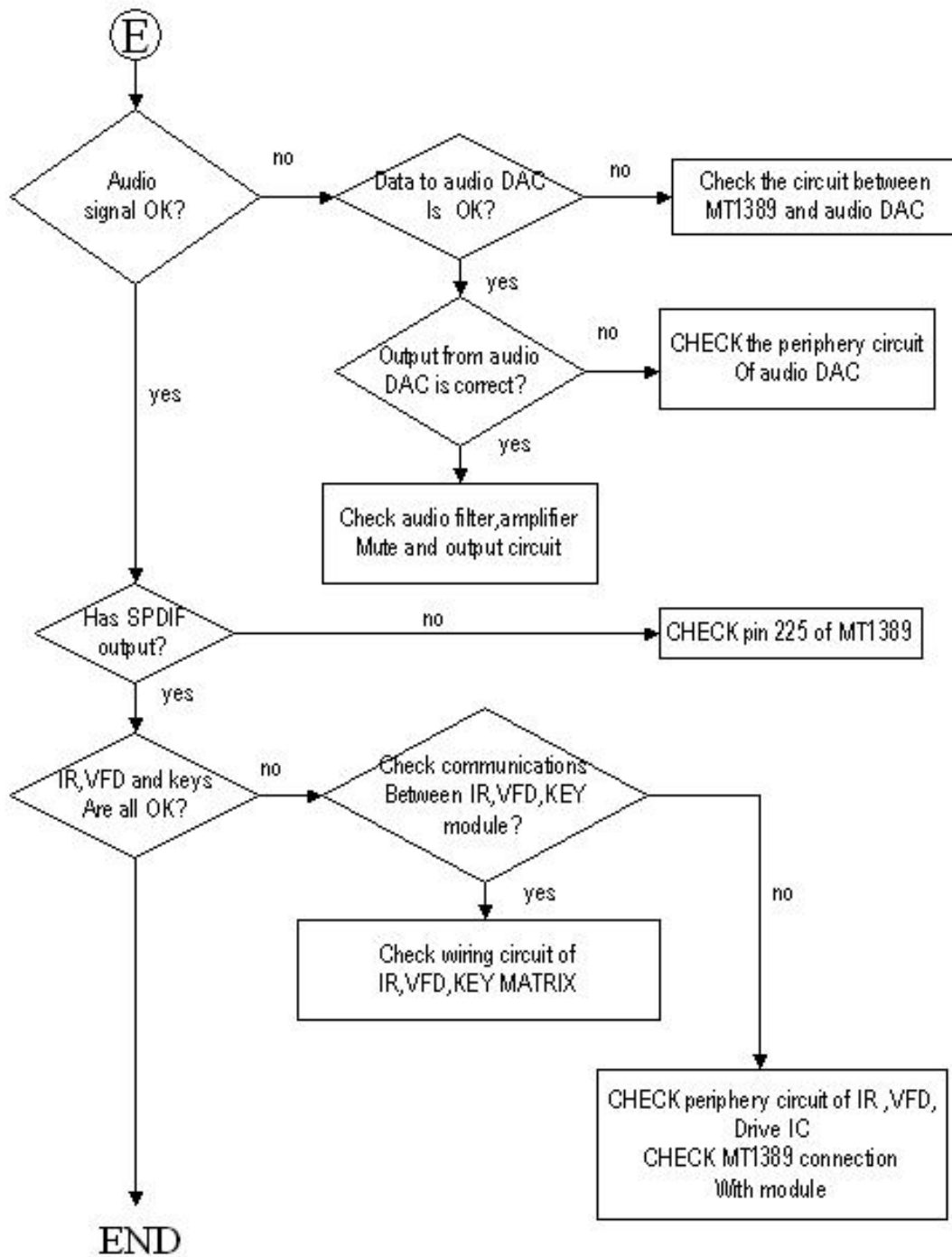






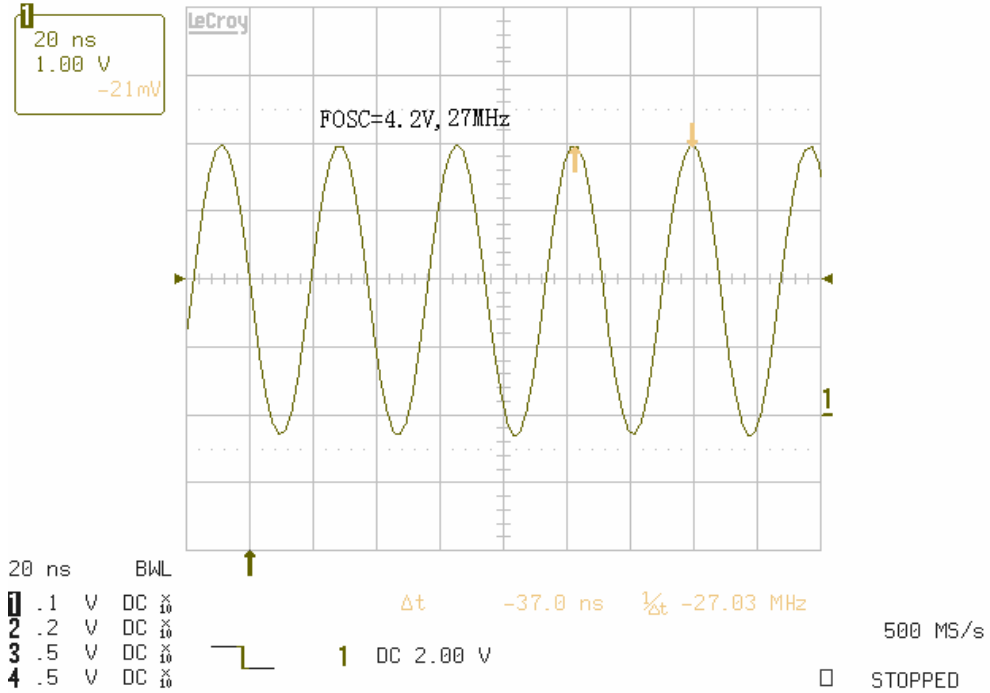






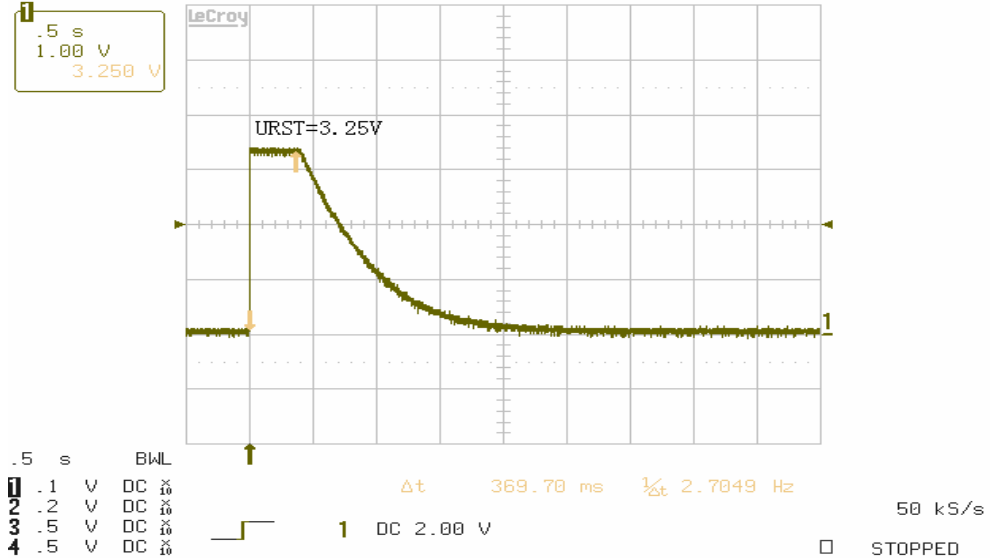
MT1389 MASTER CLOCK 27MHz

26-Dec-01
21:24:21



RESET CIRCUIT SIGNAL

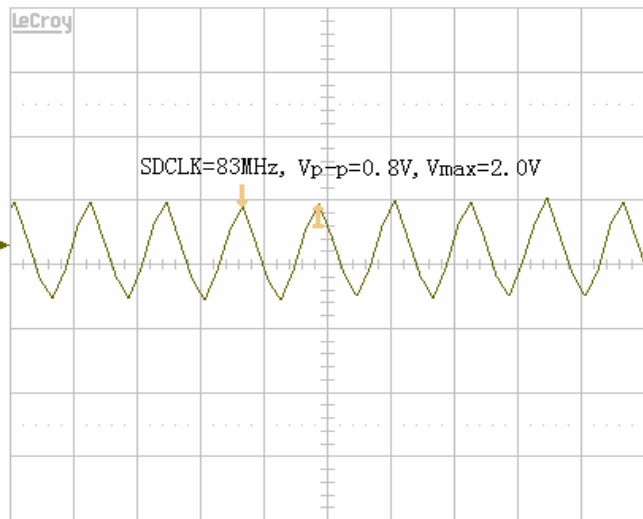
26-Dec-01
21:33:34



SDRAM WORK CLOCK

26-Dec-01
21:55:54

10 ns
0.50 V
22mV



10 ns BWL

- 1 50 mV DC $\times \frac{10}{10}$
- 2 .2 V DC $\times \frac{10}{10}$
- 3 .5 V DC $\times \frac{10}{10}$
- 4 .5 V DC $\times \frac{10}{10}$

Δt 12.05 ns $\frac{1}{\Delta t}$ 82.99 MHz

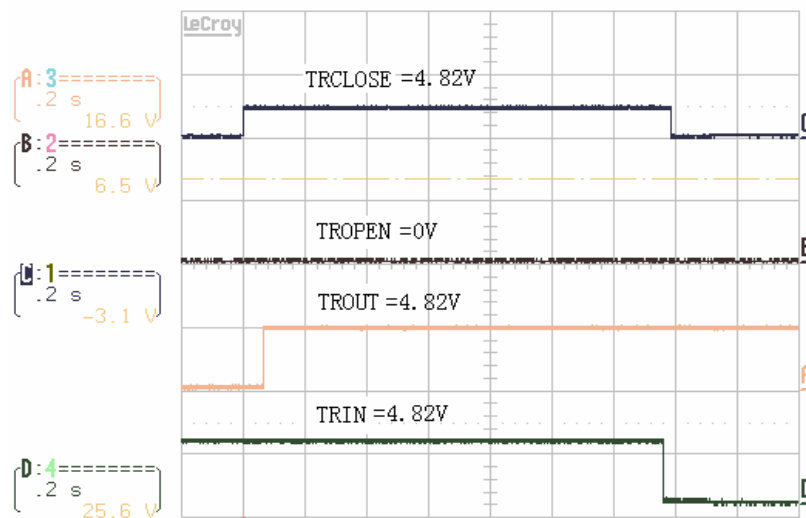
1 DC 1.64 V

500 MS/s

STOPPED

TRAY CLOSE SIGNAL

22-Dec-01
1:47:55



.5 s BWL

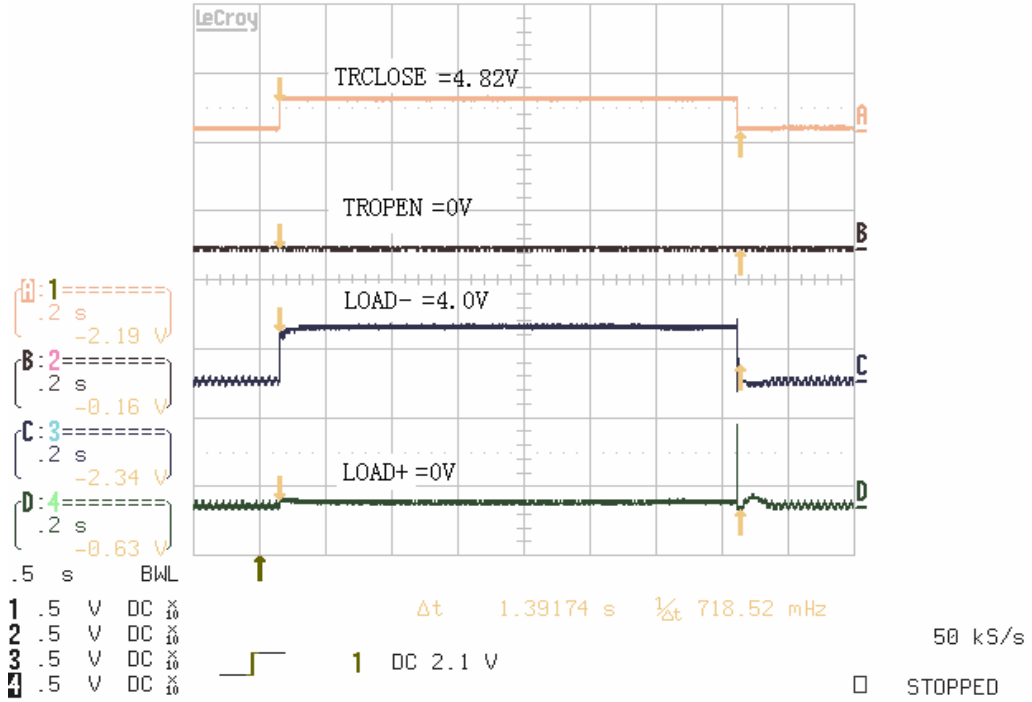
- 1 .2 V DC $\times \frac{10}{10}$
- 2 .5 V DC $\times \frac{10}{10}$
- 3 .5 V DC $\times \frac{10}{10}$
- 4 .5 V DC $\times \frac{10}{10}$

1 DC 2.08 V

50 kS/s

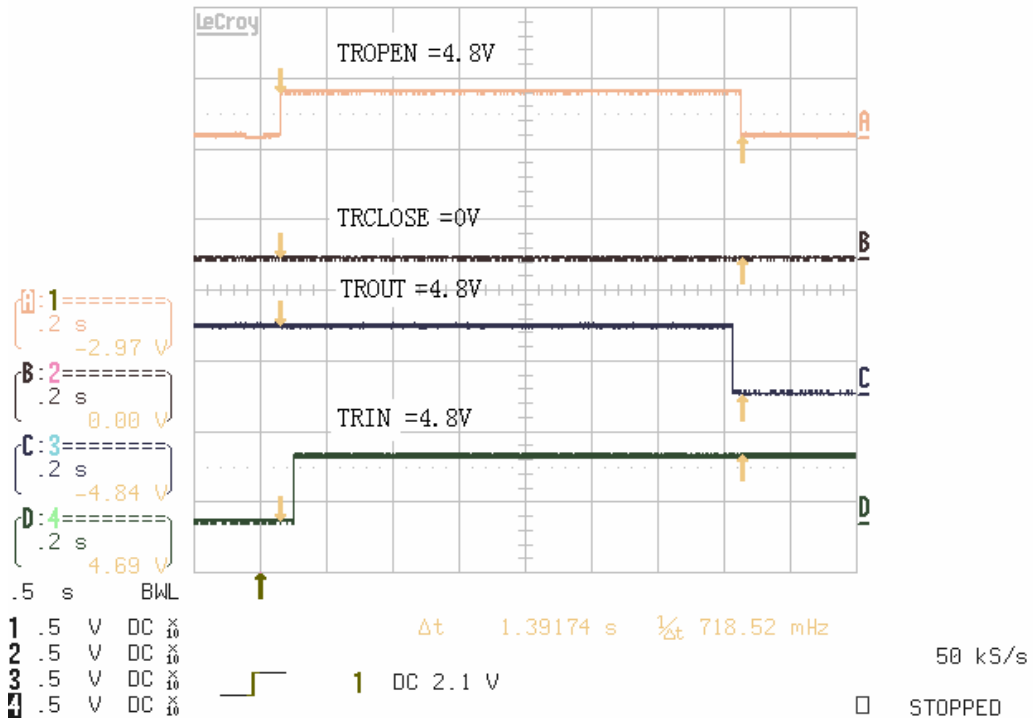
STOPPED

22-Dec-01
2:23:49

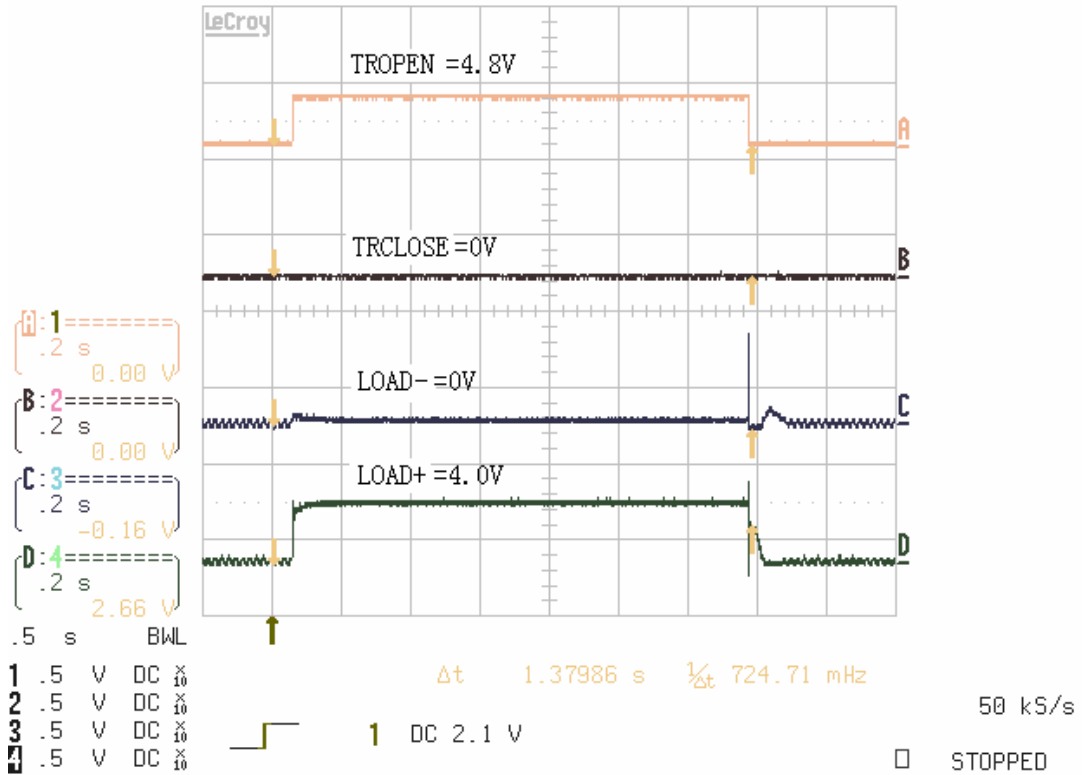


TRAY OPEN SIGNAL

22-Dec-01
2:11:56

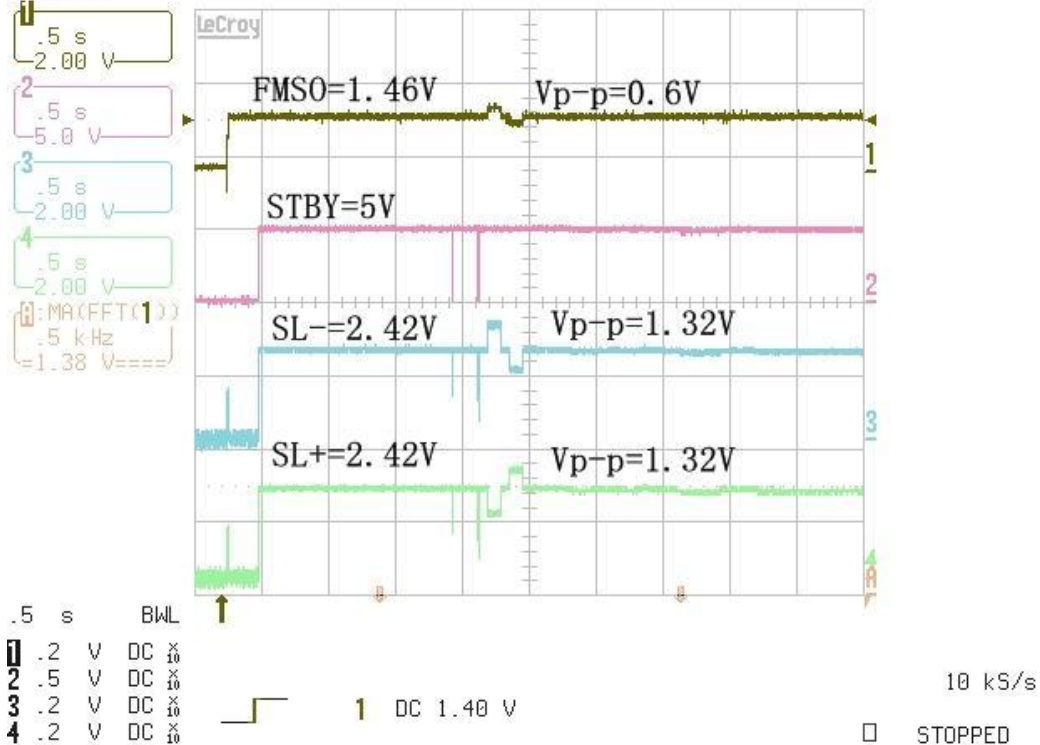


22-Dec-01
2:39:51



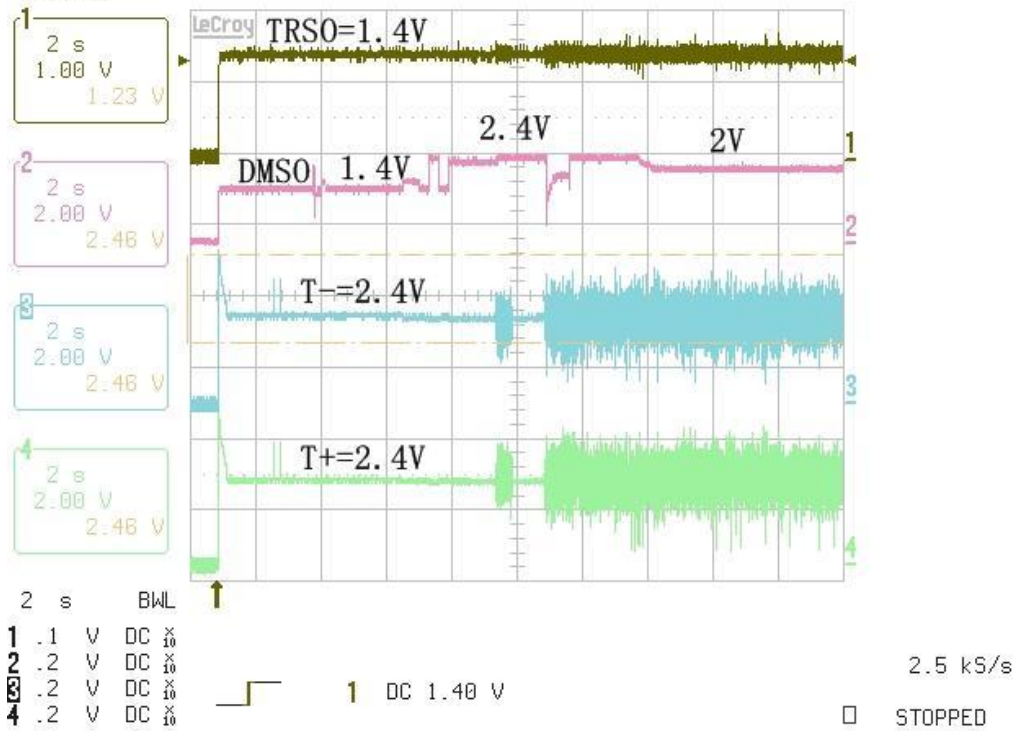
SLED CONTROL SIGNAL

12-Oct-02
0:29:31



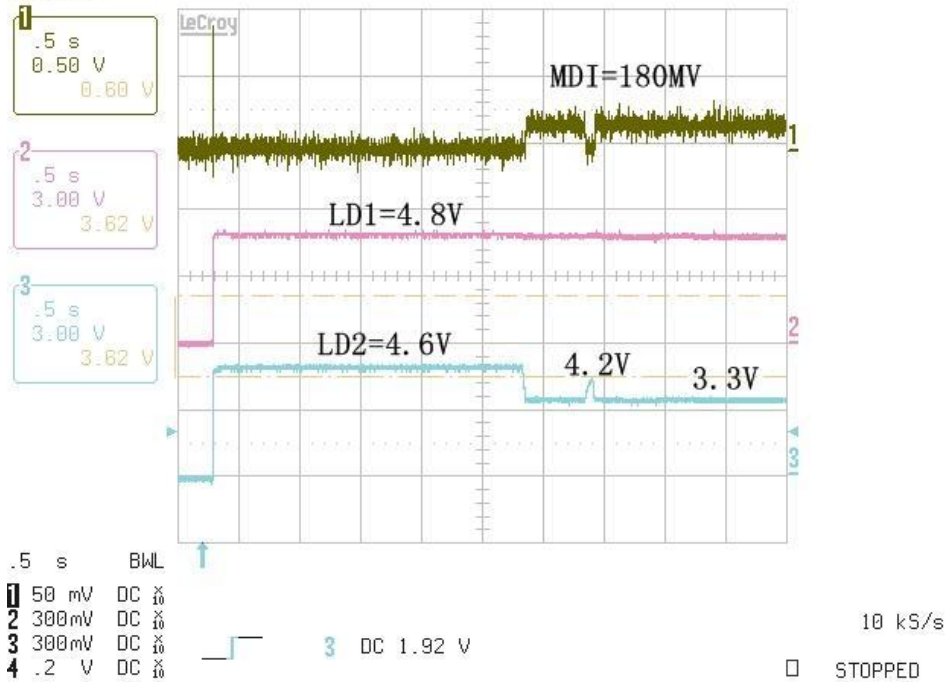
LENS CONTROL SIGNAL

12-Oct-02
1:34:25



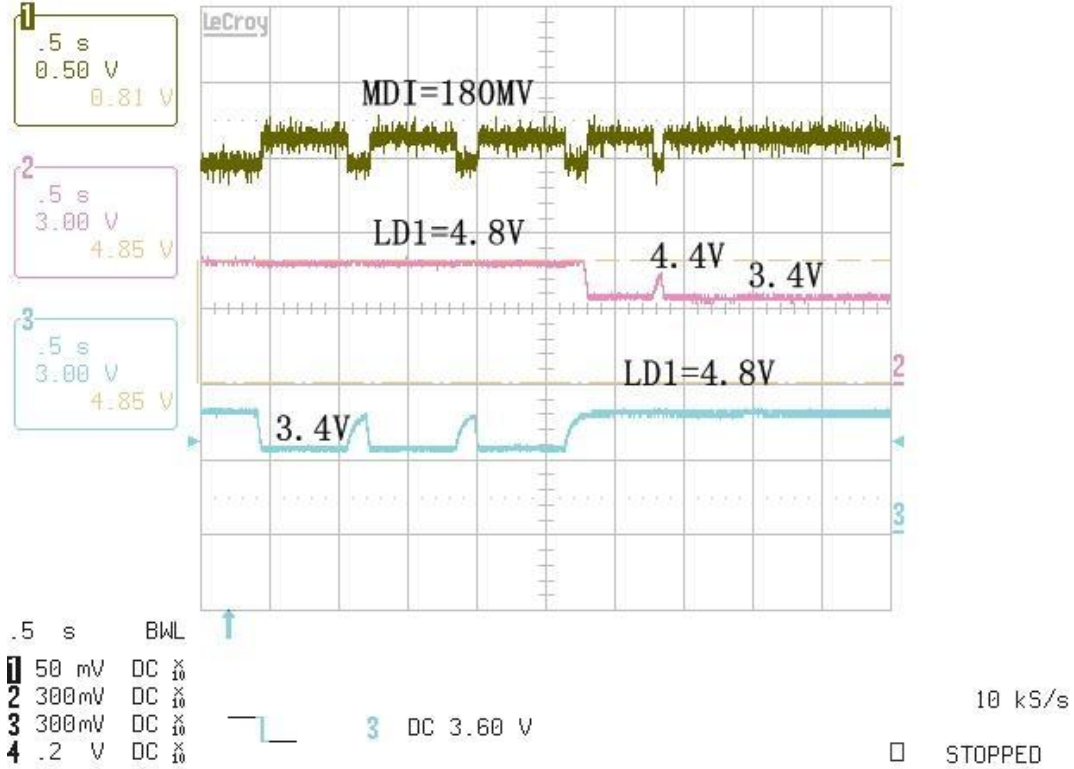
LASER CONTROL SIGNAL

14-Oct-02
17:51:20



(DVD)

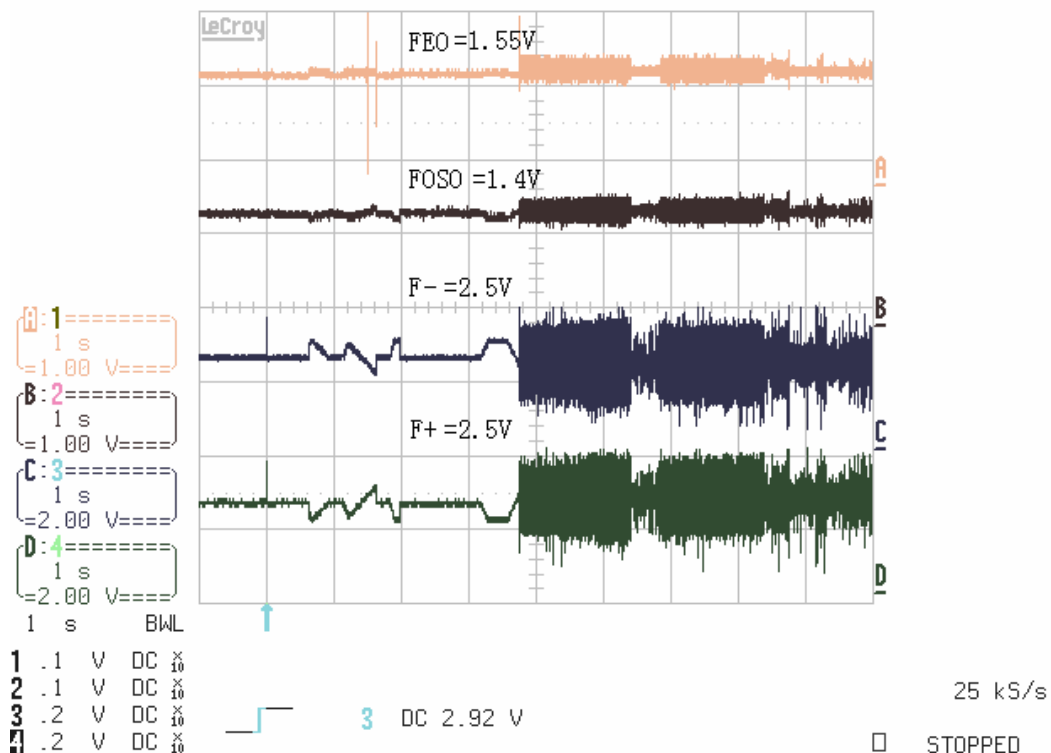
14-Oct-02
18:18:41



(VCD/CD)

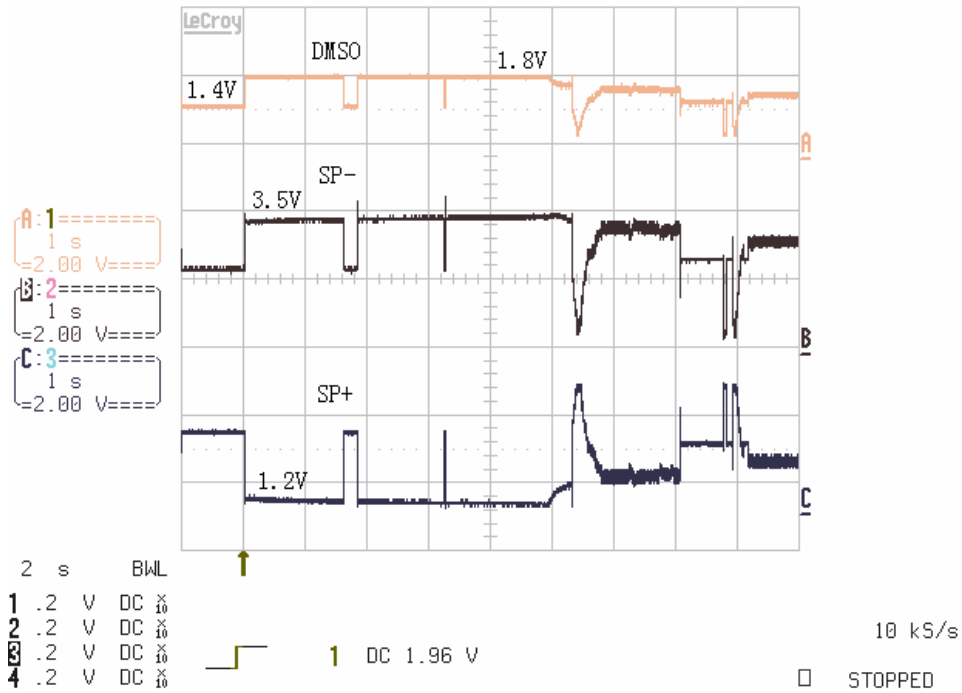
FOCUS CONTROL SIGNAL

22-Dec-01
21:21:28



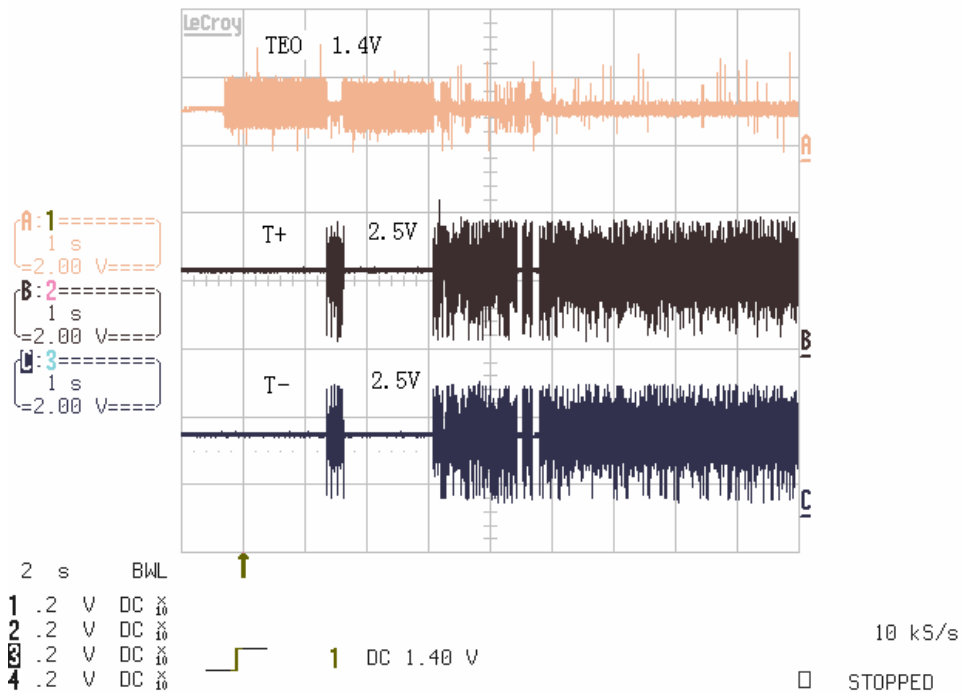
SPINDLE DRIVE SIGNAL

22-Dec-01
21:45:07



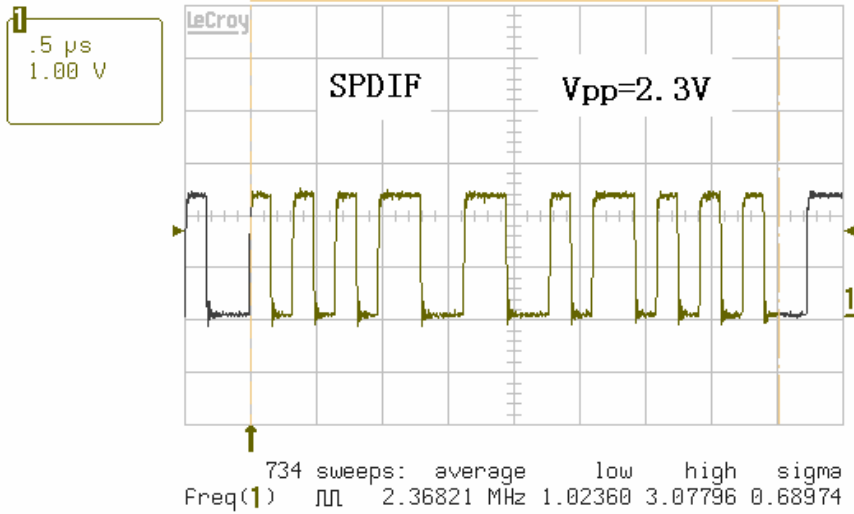
TRACK DRIVE SIGNAL

22-Dec-01
22:08:18



SPDIF DRIVE SIGNAL

26-Sep-02
18:36:50



.5 μ s

- 1 100mV DC \times
- 2 trig only
- 3 1 V DC \times
- 4 trig only



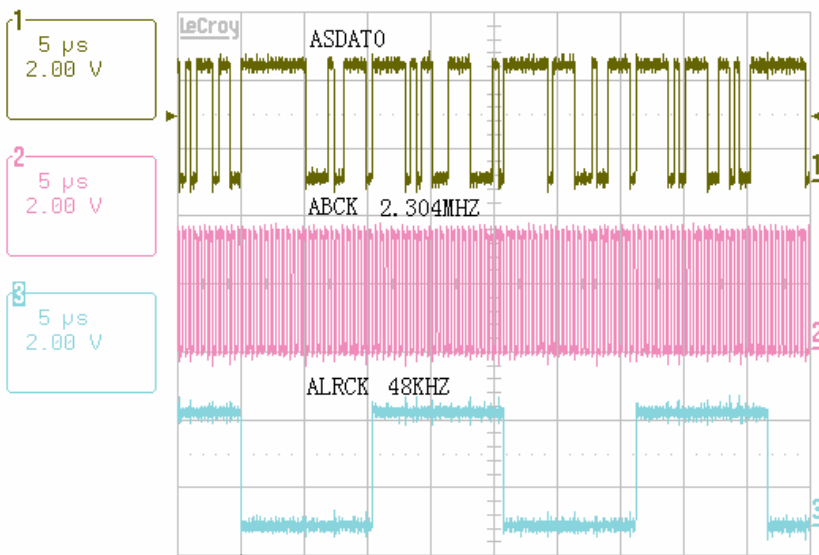
1 DC 1.64 V

1 GS/s

■ AUTO

MT1389 OUTPUT AUDIO SIGNAL

23-Jan-02
19:52:51



5 μ s

- 1 .2 V DC \times
- 2 .2 V DC \times
- 3 .2 V DC \times
- 4 50 mV AC \times



1 DC 1.88 V

500 MS/s

□ STOPPED

4. Tips Of Some Typical Trouble shooting

No disc reading

The trouble mostly occurred in the loader circuit and 24pin wiring connection, Then MT1389 in U3.

Pictures with no sound

The trouble mostly occurred in RC4558 in U13, U15, U12.

Sounds with no picture

Check video output setup firstly, and then Check MT 1389 in U3, 24C16 in main board.