



Home Theatre System Service Manual

MODEL: HTS-292-998

CONTENTS

TECHNICAL SPECIFICATION	4
IMPORTANT SAFETY MEASURES	5
TROUBLESHOOTING	7
CIRCUIT DIAGRAM	9

TECHNICAL SPECIFICATION

Description	Details
Power supply standard	~110V/220-240V 50Hz/60Hz
Main channel output	50W x 2 (4 ohm / 1K / THD=2%)
Center channel output	10W (4 ohm / 1K / THD=10%)
SURR channel output	10W x 2 (4 ohm / 1K / THD=10%)
Channel separate rate	≥ 35dB
Harmonic distortion	≤ 2%
Frequency response	20Hz~20KHz (±2dB)
Input sensitivity	250mV
Weight	5kg
Measurement	430 x 330 x 60(mm)

IMPORTANT SAFETY MEASURES

Before using this machine, please read all the safeties and operating instructions, please abide by all the warnings on the machine and operating instructions. Meanwhile, please observe all the indications about safe operating.

1. Protection of electric power supply line

Be aware that the electric power supply line is not tramped, orpressed by heavy objects. Pay more attention to the plug of power supply line and the outlet in the machine.

Do not lengthen the electric lines or make outlet overload, due to the danger of catching fire or getting electric shock.

Do not pull or drag the power supply line.

2. Ventilation

The groove on the casing of the machine is to ensure safe action on it and protect it from overheating. This groove must NOT be blocked or covered.

This set must be put in ventilated place.

DO NOT put any object on it or cover it with cloth.

The distance away from the wall should not be less than 10 centimeters.

3. Electric shock

Prevent objects or liquid from dropping into the mchine from the groove. If metal objects, even a hairpin or a needle drop into it, electric conduction will happen and the danger of getting electric shock is quite possible.

So families with children should prevent children from putting anything, especially metal into the inner machine.

4. Repairing

The user should NOT do any repairing work except in the range stipulated in the instructions. Various repairing work outside the range should be entrusted.

To recognized repairing workers.

5. Casing dismantling

DO NOT dismantle the casing. If one touches the inner components, he may properly get serious electric shock.

6. Electric alternating output plug

The electric alternating output plug in the rear panel should NOT insert neither speaker equipment with higher rated power nor home appliance, such as electric iron, bread toaster, in prevention of causing fire or electric shock.

7. Unusual smell

When discover unusual smell and smoke, cut off the power supply immediately and pull the plug out off the outlet on the wall.

8. Problem need repair

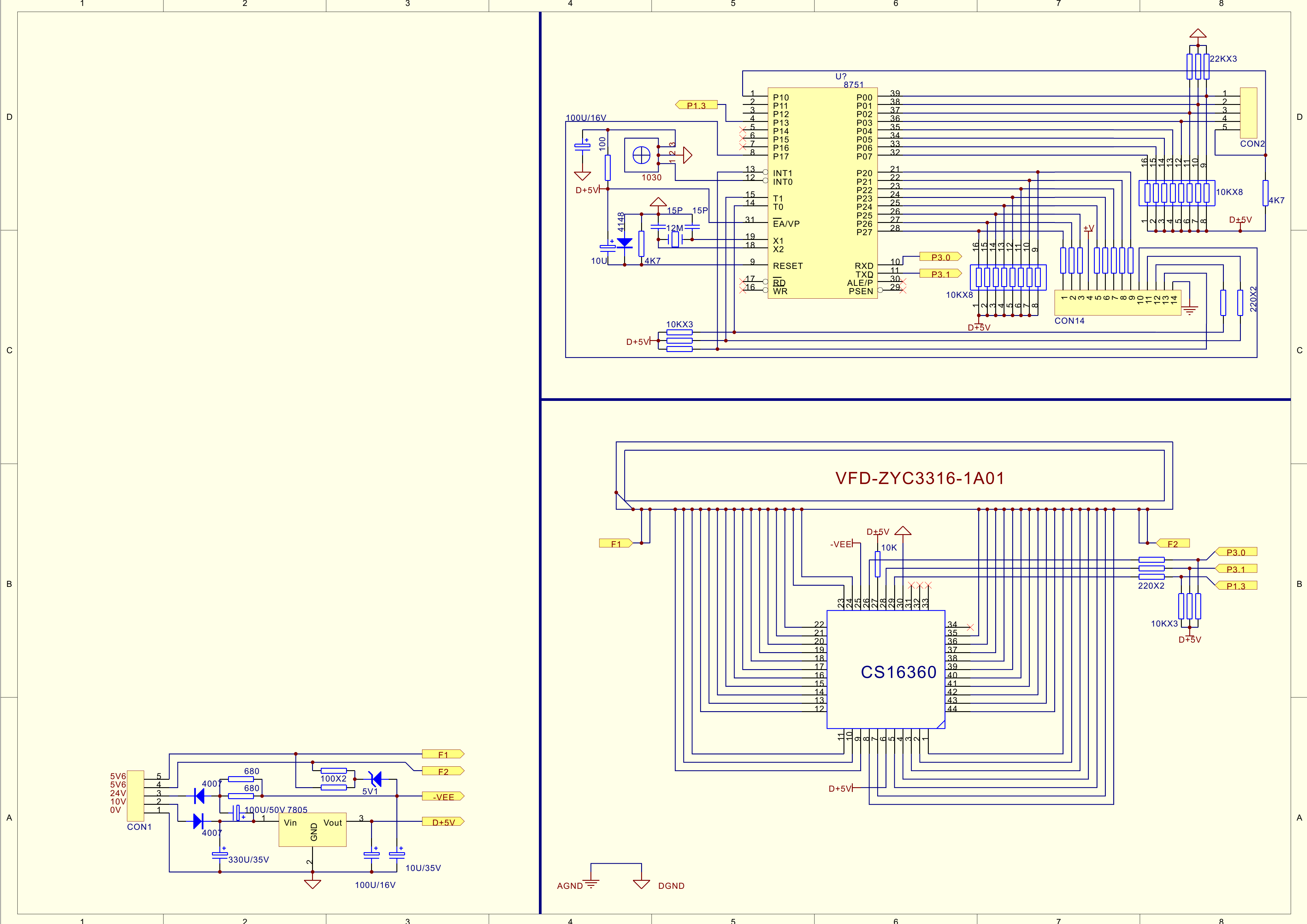
When the listed problems occur, recognized workers must be entrusted to repair the set.

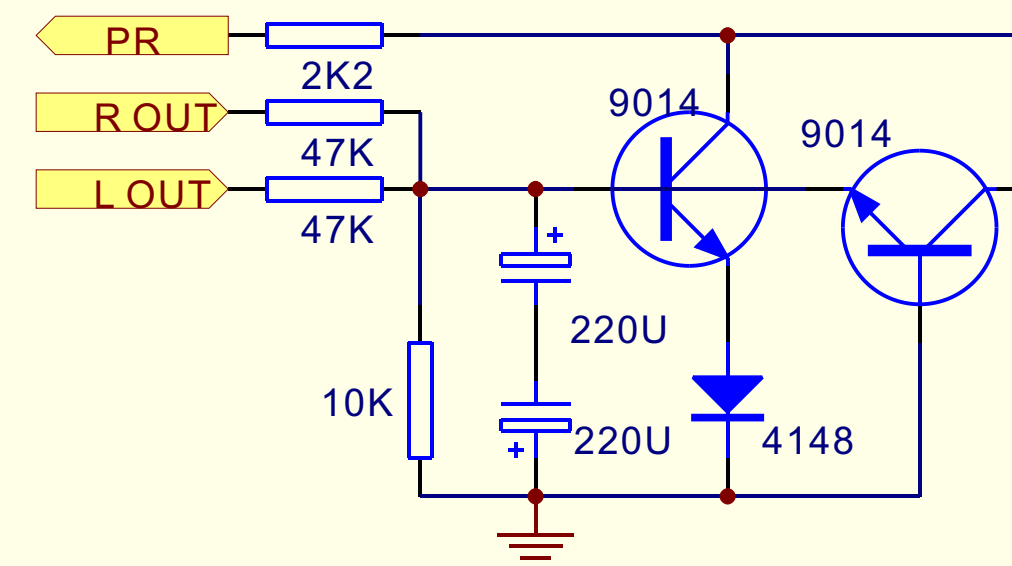
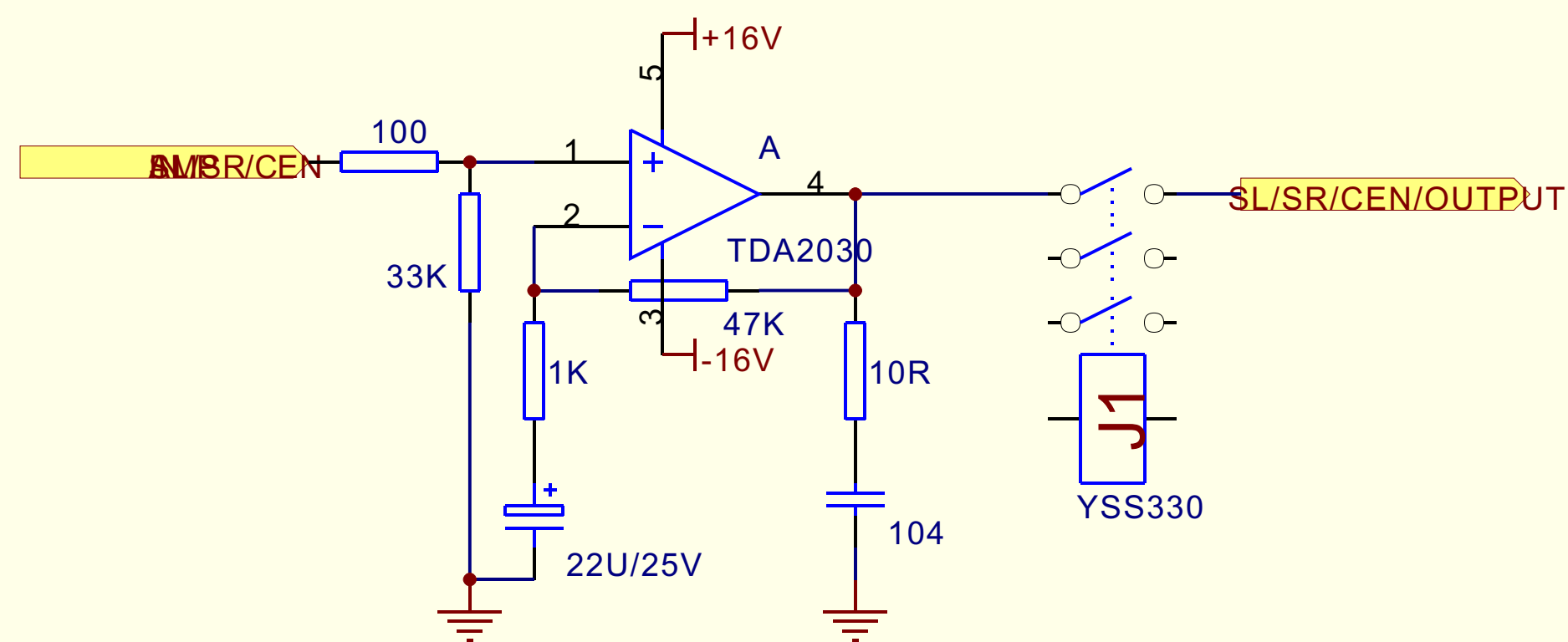
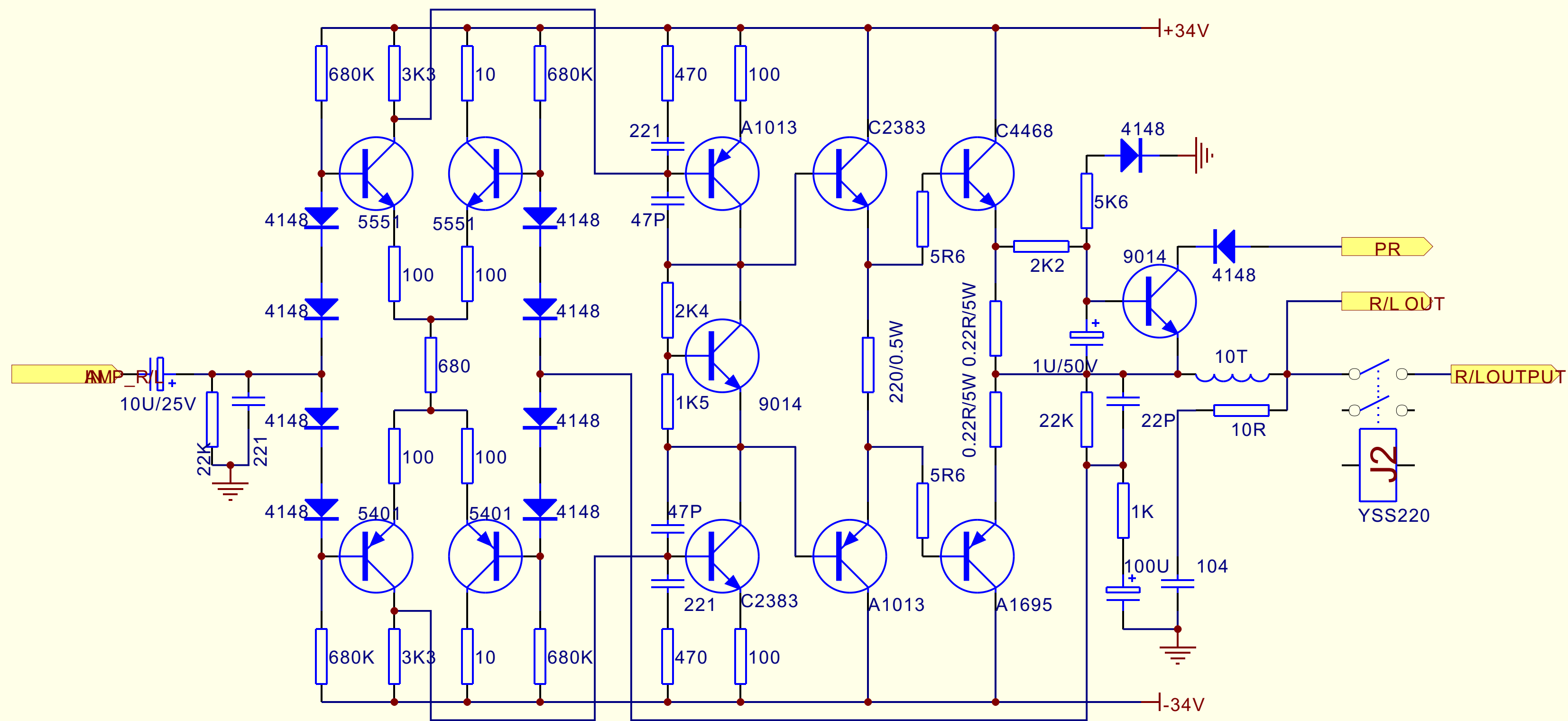
- a. Damage of electric power supply line or plug.
- b. Object or liquid dropped into the machine.
- c. Showered by rain
- d. Working unusually even after repairing under the operating instruction. The machine cannot resume normal working until it is examined and repaired thoroughly.
- e. The machine dropped from high place or the casing is damaged. The function of the machine change noticeably.

TROUBLESHOOTING

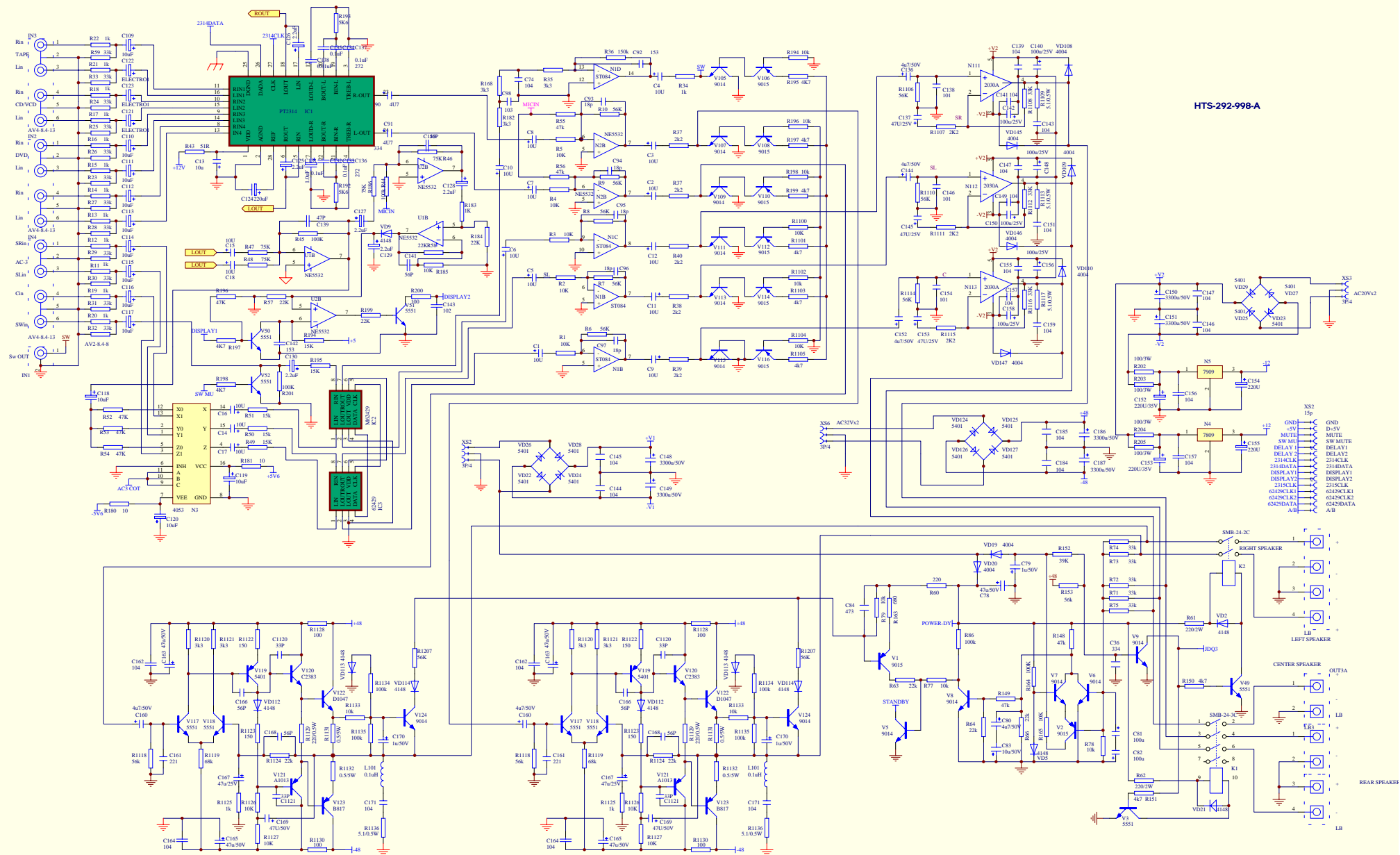
PROBLEM	POSSIBLE CAUSE	REMEDY
Press POWER/ON, this unit is not turned on.	The cord is not plugged in or not completely plugged in.	Plug in the cord firmly.
This unit does not operate normally	May be greatly influenced by some loud external noise (like lightening or excessive static) or any wrong operations occurs in using.	Turn off the unit to get it in standby mode. Unplug the power cord.
No sound is heard or no picture is seen	The output cord is not connected right.	Connect the cord correctly. Or it may damage the cord.
	The function is set to be operated manually or the right input source is not selected.	Select the correct input source or set the system to be auto operating.
	The speaker is not connected firmly	Connect firmly.
Sound can only be heard from one side of the speakers.	Check that the volume in each channel are the same.	Adjust to the right place.
	The cord is not connected correctly.	Connect the ground cord correctly. If the problem persists, the speaker cord may have been damaged.
No sound from the front speaker.	The cord is not connected correctly.	Connect the speaker cord well.
No sound from the center speaker	The volume is adjusted to the minimum.	Increase the volume.
	The cord is not connected well.	Reconnect the cord.
No sound from the subwoofer.	The volume is adjusted to the minimum.	Increase the cord well.
	The cord is not connected well.	Connect the cord well.
No sound from the surround speaker	The cord is not connected well.	Connect the cord firmly. If the problem persists, the cord may have been damaged.
	The cord is not connected well.	Connect the cord firmly.
The remote control is out of work.	The battery may be too weak.	Change the battery.

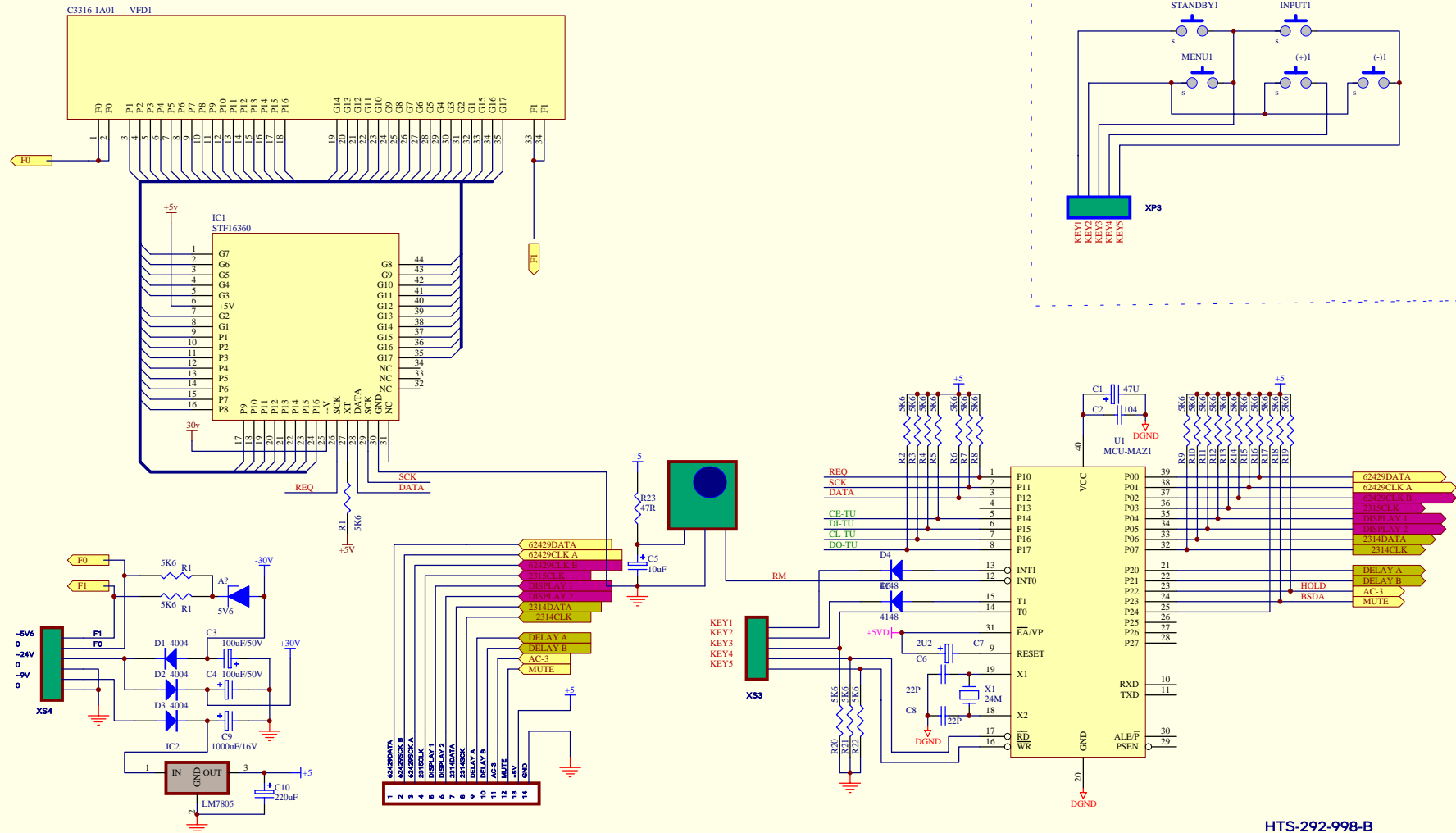
PROBLEM	POSSIBLE CAUSE	REMEDY
The remote control does not work well.	An obstacle is in the way.	Move the obstacle.
	It may be in wrong operating place.	The maximum operating range of the remote control is 6m within an angle of 30 degrees from the axes of the front panel.
	The remote sensor is in direct sunshine or light (like duophase fluorescent lamp).	Change the position of the unit.



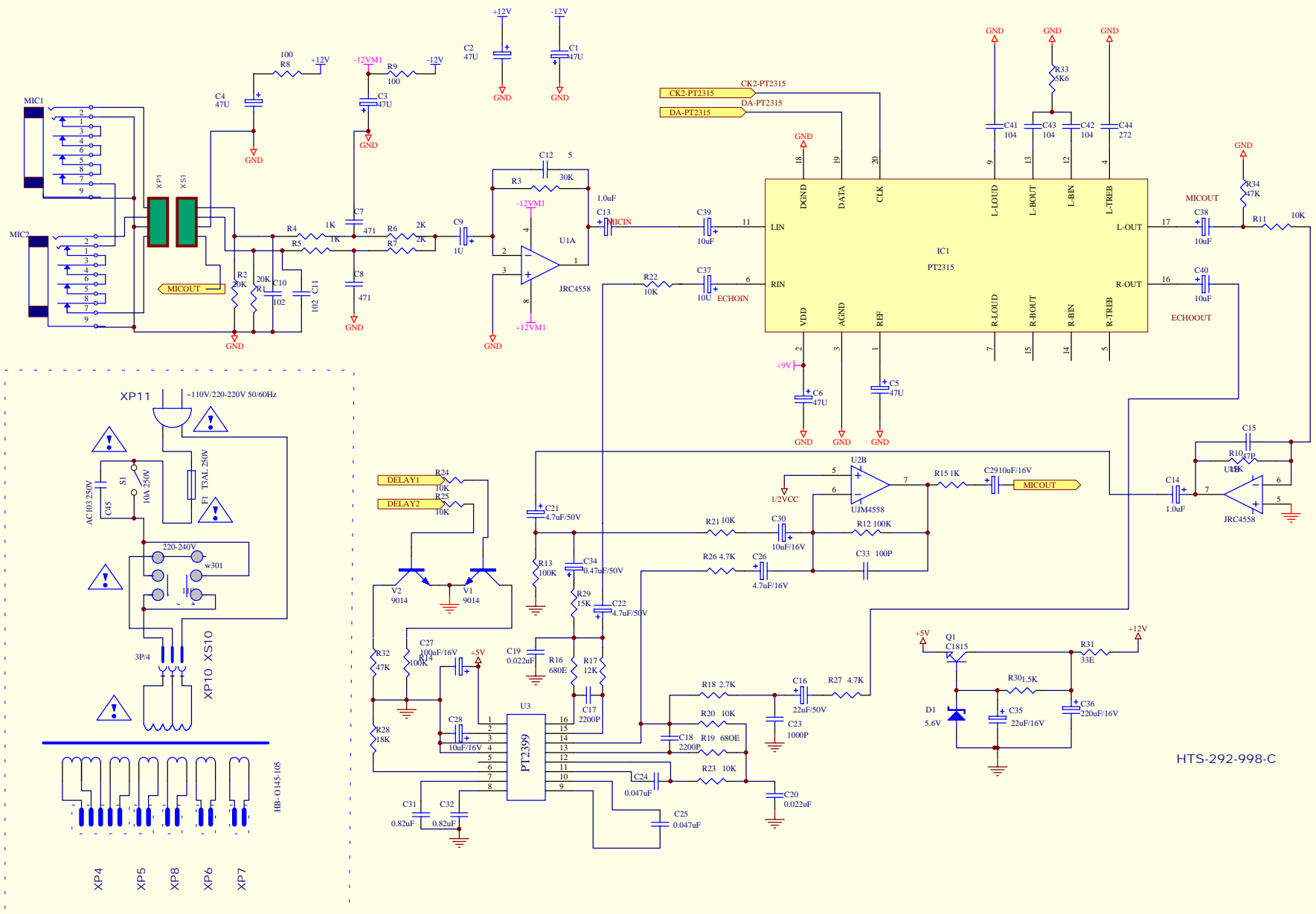


M998 --





HTS-292-998-B



HTS-292-998-C